

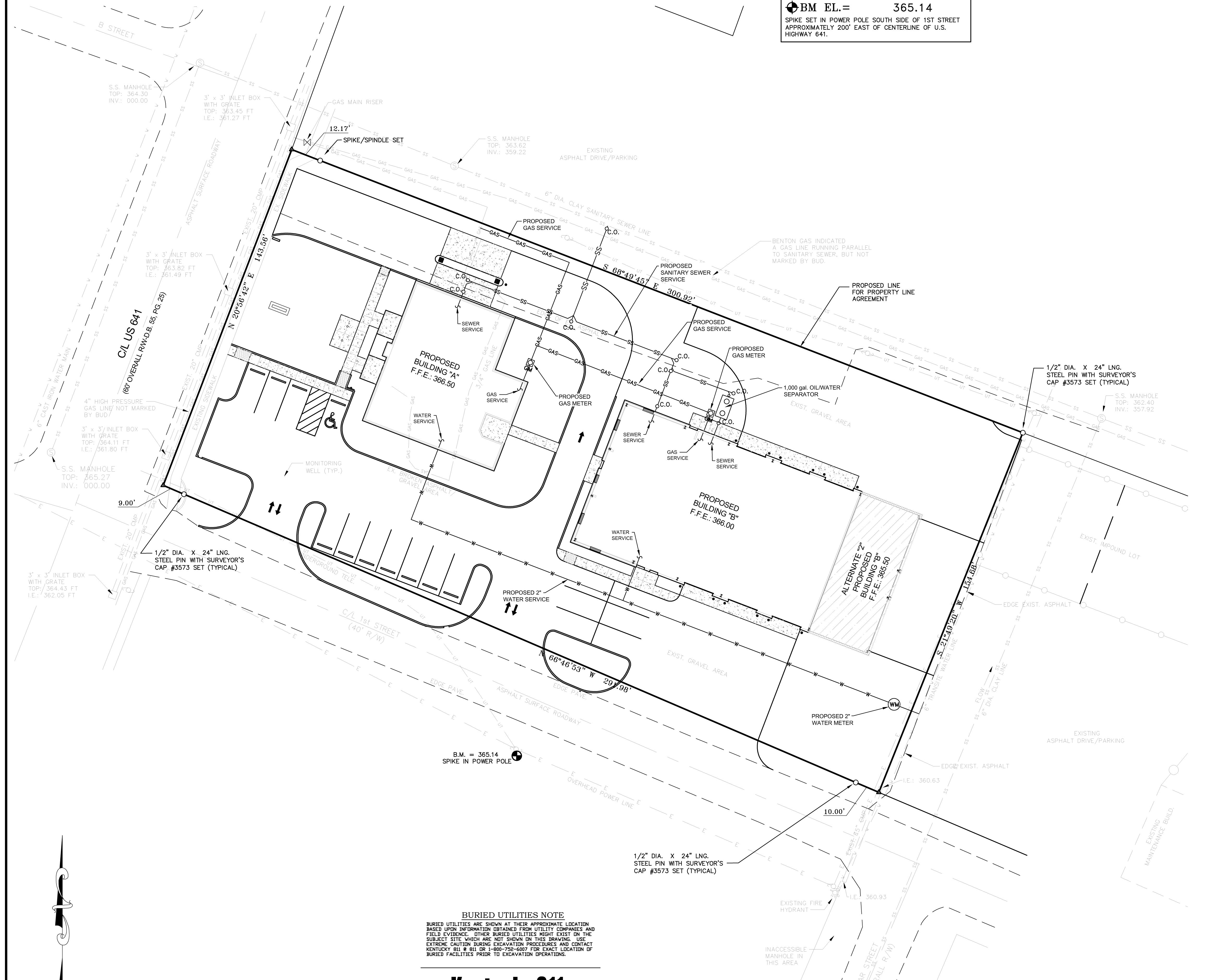
BM EL. = 365.14
 SPIKE SET IN POWER POLE SOUTH SIDE OF 1ST STREET
 APPROXIMATELY 200' EAST OF CENTERLINE OF U.S.
 HIGHWAY 641.

GENERAL NOTES

1. CONTRACTOR SHALL COORDINATE EXACT LOCATION OF UTILITY LINES AND TIE-IN POINTS WITH LOCAL UTILITY COMPANIES AND INSTALL APPROPRIATE CONDUITS, FOUNDATIONS AND ETC. FOR SERVICE TO UTILITY CONNECTION POINT AS IDENTIFIED HEREON OR AS DIRECTED BY UTILITY PROVIDER. SERVICES INCLUDE, WATER, GAS, ELECTRIC, TELEPHONE, CABLE T.V. AND INTERNET.
2. SEE PLUMBING PLANS FOR CLEAN-OUT DETAILS.
3. THE CONTRACTOR IS RESPONSIBLE FOR ALL UTILITY TAP-ON FEES & METERS AND ETC. CONTRACTOR TO COORDINATE WITH UTILITY COMPANIES.
4. ALL CONSTRUCTION SHALL BE IN CONFORMANCE WITH FEDERAL, STATE & LOCAL CODES AND SPECIFICATIONS.
5. CONTRACTOR SHALL VERIFY LOCATION AND DEPTH OF UTILITIES ENTRY TO BUILDING WITH ARCHITECTURAL AND MECHANICAL/PLUMBING/ELECTRICAL PLANS.
6. ALL TRENCHES BENEATH PROPOSED OR EXISTING IMPROVED SURFACES (ASPHALT/CONCRETE), SHALL BE BACKFILLED WITH COMPACTED CRUSHED STONE (SEE DETAIL "Q", SHEET C5.01). CONTRACTOR SHALL RESTORE EXISTING IMPROVED SURFACES WITH SAME TYPE AND THICKNESS, SEE DETAILS.
7. THE CONTRACTOR SHALL FULLY RESTORE ALL AREAS (ASPHALT, CONCRETE, CURBS, SIDEWALKS, LANDSCAPING, & ETC.) DISTURBED DURING CONSTRUCTION AT NO ADDITIONAL COST TO THE OWNER.
8. THE SANITARY SEWER LATERAL SHALL BE INSTALLED AT A MINIMUM OF 2% SLOPE. INSTALL STACKS AND CLEAN OUTS AS REQUIRED PER PLUMBING CODES. SEE MEP PLANS FOR SIZE AND SPECIFICATIONS.
9. A MINIMUM HORIZONTAL DISTANCE OF 10' (FEET) SHALL BE MAINTAINED BETWEEN THE WATER AND SANITARY SEWER SERVICE LINES MEASURED FROM THE OUTSIDE OF PIPE TO OUTSIDE OF PIPE.
10. CONTRACTOR SHALL NOTIFY UTILITY OWNERS PRIOR TO ANY CONNECTIONS OR WORK INVOLVING THEIR FACILITIES.
11. ALL UTILITY MATERIALS AND CONSTRUCTION SHALL COMPLY WITH THAT PARTICULAR UTILITY PROVIDER'S STANDARDS, METHODS AND PROCEDURES.

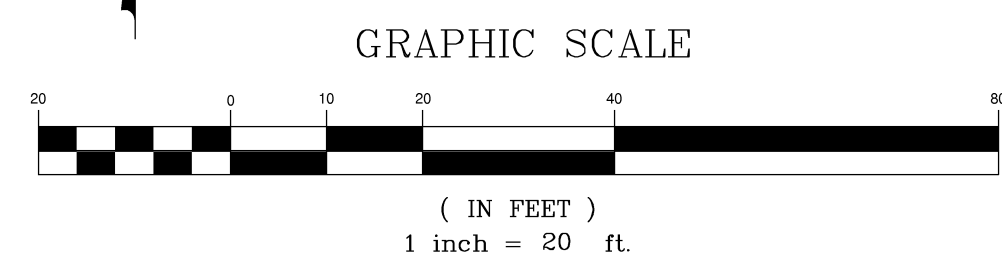
LEGEND

---	PROPERTY BOUNDARY LINE
---	EX. OVERHEAD ELECTRIC LINE
---	EX. CENTERLINE OF ROAD
---	EX. GAS LINE
---	EX. WATER LINE
---	EX./FUTURE SANITARY SEWER LINE
---	EX. UNDERGROUND TELEPHONE LINE
○	EXIST. IRON MARKER AS DESCRIBED
○	EX. POWER POLE- LIGHT POLE
○	EX. WATER VALVE
○	EX. FIRE HYDRANT
---	PROPOSED GAS LINE
---	PROPOSED SANITARY SEWER LINE
---	PROPOSED WATER LINE, 2" Sch. 40 PVC
---	EX. FENCE
○	PROPOSED CLEAN OUT LOCATION, INSTALL PER PLUMBING CODES
○	PROPOSED GAS METER
○	PROPOSED 2" WATER METER



BURIED UTILITIES NOTE
 BURIED UTILITIES ARE SHOWN AT THEIR APPROXIMATE LOCATION BASED UPON INFORMATION OBTAINED FROM UTILITY COMPANIES AND FIELD EVIDENCE. OTHER BURIED UTILITIES MIGHT EXIST ON THE SUBJECT SITE WHICH ARE NOT SHOWN IN THIS DRAWING. USE EXTREME CAUTION DURING EXCAVATION PROCEDURES AND CONTACT KENTUCKY 811 @ 811 OR 1-800-752-6007 FOR EXACT LOCATION OF BURIED FACILITIES PRIOR TO EXCAVATION OPERATIONS.

Kentucky 811
 Know what's below.
 Call before you dig.
 Call 811 or 800-752-6007
 www.kentucky811.org
 Two Business Days Before You Dig
 IT'S THE LAW



GEOTECH
 ENGINEERING & TESTING, INC.
 500 SOUTH 17th STREET PADUCAH, KY 40003 PHONE: 270-443-1895
 601 NORTH 4th STREET MURRAY, KY 40071 PHONE: 270-753-7307
 403 NORTH COURT STREET MARRION, IL 62959 PHONE: 618-907-9190
 WWW.GEOTECHENGINEERS.NET COPYRIGHT © 2008 - GEOTECH ENGINEERING & TESTING, INC.

SITE UTILITY PLAN

castleberry mcgregor swinford
 ARCHITECTS

BENTON GAS SYSTEMS

Project No. 10176