

DEMO NOTES:

- CONTRACTORS SHALL THOROUGHLY INSPECT THE PROJECT TO VERIFY EXISTING CONDITIONS WITH RESPECT TO THE WORK SCOPE IN ACCORDANCE WITH THE GENERAL REQUIREMENTS DESCRIBED IN THE PROJECT MANUAL. ANY DEMOLITION NECESSARY TO COMPLETE THIS PROJECT THAT IS NOT SPECIFICALLY NOTED ON THE DOCUMENTS BUT IS EVIDENT FROM VISUAL OBSERVATION OF THE PROJECT SHALL BE INCLUDED.
- PROVIDE ALL INCIDENTAL WORK REQUIRED AS PART OF DEMOLITION INCLUDING BUT NOT LIMITED TO REMOVAL OF ANCHOR BOLTS, TRIM, BLOCKING, ETC.
- AREAS WHERE DEMOLITION OCCURS SHALL BE REPAIRED TO THE EXTENT TO MEET THE REQUIREMENTS OF THE NEW CONSTRUCTION INCLUDING, BUT NOT LIMITED TO SUBSTRATE REPAIRS, STABILIZATION AND PATCHING OF SURFACE WHERE DEMOLITION OCCURS TO MATCH ADJACENT SURFACES IN FORM, TEXTURE AND STRUCTURAL INTEGRITY. REFER TO FINISH SCHEDULE.
- REFER TO OTHER DISCIPLINES CONSULTANTS FOR ADDITIONAL INFORMATION WITH RESPECT TO THE EXTENT OF DEMOLITION WORK.
- COORDINATE DEMOLITION REQUIREMENTS WITH NEW CONSTRUCTION. REMOVE EXISTING FINISHES WHERE FINISHES ARE SPECIFIED. REFER TO FINISH SCHEDULE FOR FINISHES.
- DIMENSIONS ARE BASED ON EXISTING DRAWINGS AND FIELD MEASUREMENTS. CONTRACTOR SHALL FIELD VERIFY ALL DIMENSIONS PRIOR TO THE COMMENCEMENT OF WORK.

DEMO LEGEND:

- 03 CONCRETE
  - 3.01 REMOVE CONCRETE PAD/ENCLOSURE AND CAP
  - 3.02 REMOVE EDN WALL
- 04 MASONRY
  - 4.01 REMOVE MASONRY WALL
- 05 METALS
  - 5.01 REMOVE BOLLARD
- 07 THERMAL & MOISTURE
  - 7.01 REMOVE DOWN SPOUT - REROUTE
- 23 MECHANICAL
  - 23.01 REMOVE VENT

A

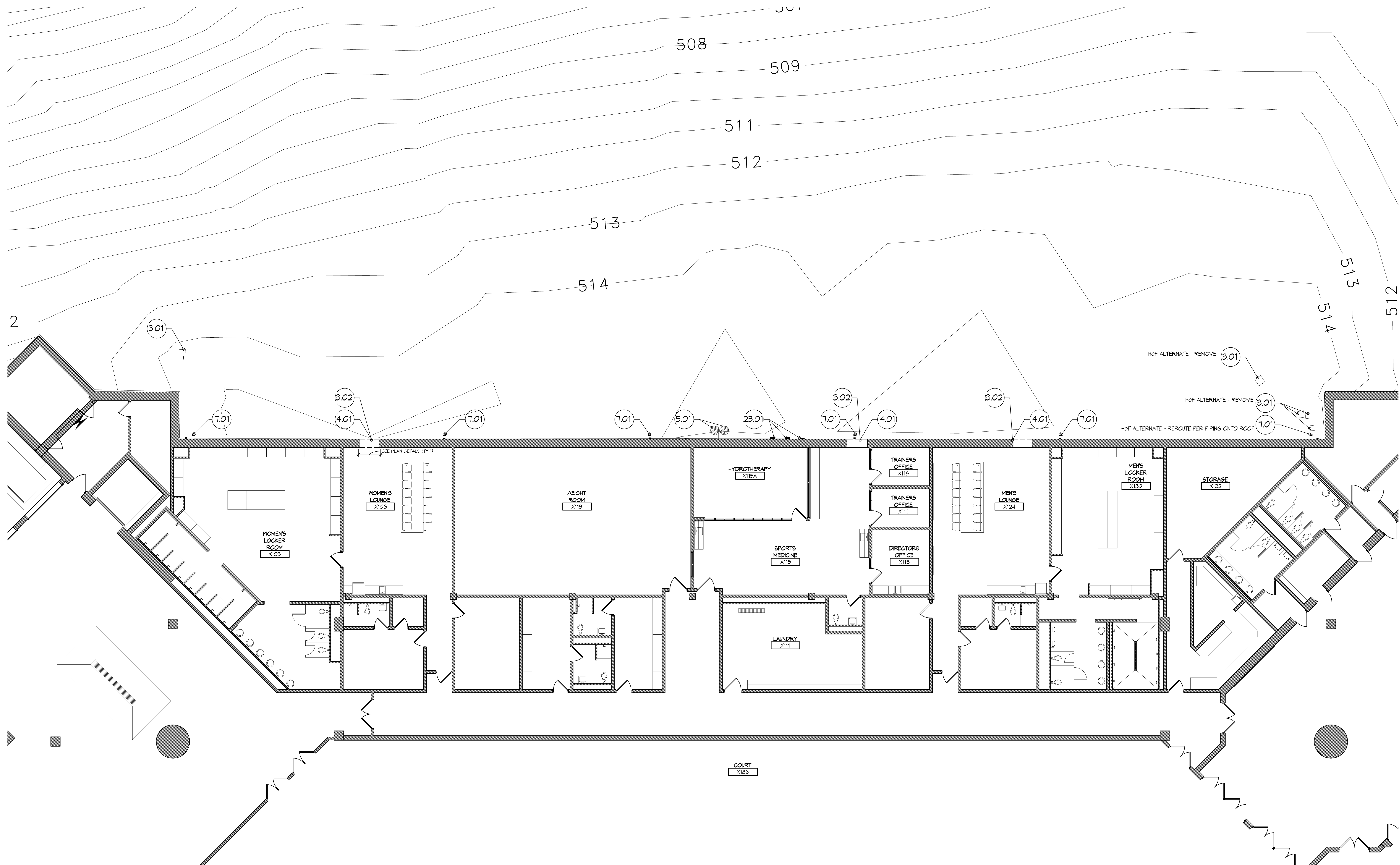
B

C

D

E

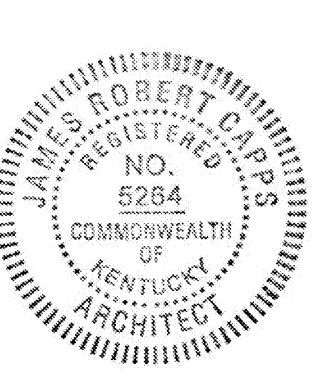
F



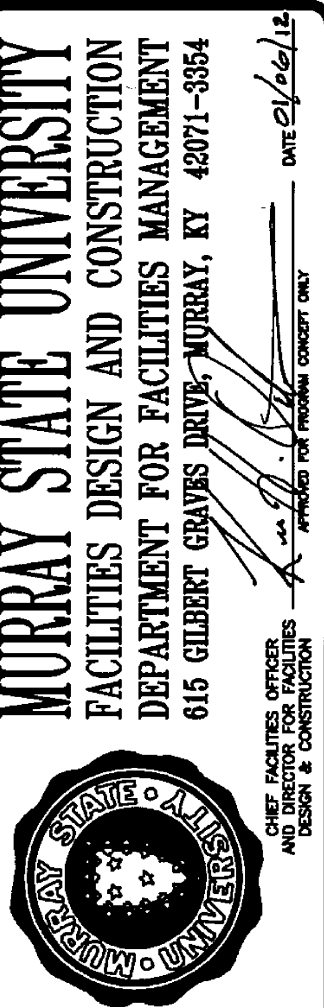
EXISTING LOWER LEVEL DEMO PLAN

SCALE | 1/8" = 1'-0"

C:\Users\lshale\Documents\Projects\2983.00 SP-2012\_cshale.rvt 1/6/2012 3:58:15 PM



**Hastings+Chivetta**  
 ARCHITECTURE • PLANNING • ENGINEERING  
 6275 Enterprise Square, Suite 500 | Nashville, Tennessee 37204 | Tel: 615.882.3233 | www.hastingschivetta.com  
 CIVIL, ARCHITECT, PLANNING, WORKMAN ENGINEERING & TESTING, INC., 1715 DILLIGAD DRIVE, MURRAY, KENTUCKY 42071  
 CIVIL, ARCHITECT, PLANNING, WORKMAN ENGINEERING & TESTING, INC., 465 N. COURT ST., MARION, ILLINOIS 62958  
 MPE-MARCUM ENGINEERING, LLC, 500 SOUTH 17TH STREET, PADUCAH, KENTUCKY, 40302



**MURRAY STATE UNIVERSITY**  
 FACILITIES DESIGN AND CONSTRUCTION  
 DEPARTMENT FOR FACILITIES MANAGEMENT  
 616 GILBERT DRIVE, MURRAY, KY 42071-3854  
 MURRAY STATE UNIVERSITY  
 1000 UNIVERSITY AVENUE, MURRAY, KY 42071-3854

**MURRAY STATE UNIVERSITY**  
 SPORTS PRACTICE FACILITY  
 MURRAY STATE UNIVERSITY  
 MURRAY, KENTUCKY  
 BID SET - 2012-01-04

REVISIONS

Date	Description
2012-01-04	
2983.00	H+C Project No.
10-007	FDC Project No.
11194	BFW Project No.
11557	Marcum Project No.

Sheet Name - LOWER LEVEL EXISTING DEMO PLAN

AD2.01