

NUMBER	ROOM NAME	FINISH SCHEDULE											REMARKS
		FLOOR		BASE		WALL			CEILING				
		FINISH	COLOR	MATERIAL	COLOR	MATERIAL	FINISH	COLOR	MATERIAL	FINISH	COLOR		
LOWER LEVEL													
1000	LOBBY	PT	10,12	PTB		11	GB	PNFL	60	GB/AB-22	PNFL,PRF	65,80	C
1000X	VESTIBULE	MAT	23	PTB		11	GB	PNFL	60	GB	PNFL	65	
1000Y	SECRETARY	PT	10,12	PTB		11	GB	PNFL	60,63	GB/AB-22	PNFL,PRF	65,80	C,D,G
1010	GYMNASIUM	WD-P	-	VRB		BLACK	CMU	PNFL	64,66,67	EXPD	PNFL,WDF	65	L,J
1010X	ENTRY	WD	100	VRB		BLACK	CMU	PNFL	67	GB/AB-22	PNFL,PRF	65,80	
1010Y	MEZZANINE ACCESS	CONC/SCPS	-	VRB		BLACK	CMU	PNFL	60	EXPD	N	-	F
1100	WORKERS SUITE	CPT, VET	20,30	RR		BLACK	CMU	PNFL	60	GB/AB-22	PNFL,PRF	65,80	E
1101	DIRECTOR OPERATIONS	CPT	22	RR		BLACK	CMU	PNFL	60,62	AB-22	PRF	80	D
1102	CONFERENCE ROOM	CPT	21	RR		BLACK	CMU	PNFL	60,63	AB-22	PRF	80	D
1103	HEAD COACH	CPT	21	RR		BLACK	CMU	PNFL	60,63	AB-22	PRF	80	D
1105	ASSISTANT COACH	CPT	22	RR		BLACK	CMU	PNFL	60,62	AB-22	PRF	80	D
1106	ASSISTANT COACH	CPT	22	RR		BLACK	CMU	PNFL	60,62	AB-22	PRF	80	D
1107	GRADUATE ASSISTANT	CPT	22	RR		BLACK	CMU	PNFL	60,62	AB-22	PRF	80	D
1108	ASSISTANT COACH	CPT	22	RR		BLACK	CMU	PNFL	60,62	AB-22	PRF	80	D
1109	EQUIPMENT	VET	30	VRB		BLACK	CMU	PNFL	60	EXPD	PRF	80	
1110	STORAGE	CONC/SCPS	-	VRB		BLACK	CMU/EX	PNFL	60	EXPD	N	-	
1111	ELECTRICAL	CONC/SCPS	-	N		-	CMU/EX	PNFL	60	EXPD	N	-	
1112	MECHANICAL	CONC/SCPS	-	N		-	CMU	PNFL	60	EXPD	N	-	
1113	TOILET	PT	12	PTB		11	GB/WR	PNFL,PT	60,13,14	GB/WR	PNFL	65	A, L
1114	WORK ROOM	VET	30	RR		BLACK	CMU	PNFL	60	AB-22	PRF	80	F
1200	MEN'S SUITE	CPT	20	RR		BLACK	CMU	PNFL	60	AB-22	PRF	80	
1201	DIRECTOR OPERATIONS	CPT	22	RR		BLACK	CMU	PNFL	60,62	AB-22	PRF	80	D
1202	CONFERENCE ROOM	CPT	21	RR		BLACK	CMU	PNFL	60,63	AB-22	PRF	80	D
1203	HEAD COACH	CPT	21	RR		BLACK	CMU	PNFL	60,63	AB-22	PRF	80	D
1205	ASSISTANT COACH	CPT	22	RR		BLACK	CMU	PNFL	60,62	AB-22	PRF	80	D
1206	ASSISTANT COACH	CPT	22	RR		BLACK	CMU	PNFL	60,62	AB-22	PRF	80	D
1207	GRADUATE ASSISTANT	CPT	22	RR		BLACK	CMU	PNFL	60,62	AB-22	PRF	80	D
1208	ASSISTANT COACH	CPT	22	RR		BLACK	CMU	PNFL	60,62	AB-22	PRF	80	D
1209	EQUIPMENT	VET	30	VRB		BLACK	CMU	PNFL	60	EXPD	PRF	80	
1210	JANITORS CLOSET	CONC/SCPS	-	VRB		BLACK	CMU/GB-WR	PNFL,FRP	60,105	EXPD	N	-	K
1211	DATA / IT	CONC/SCPS	-	RR		BLACK	CMU	PNFL	60	AB-22	PRF	80	
1213	TOILET	PT	12	PTB		11	GB/WR	PNFL,PT	60,13,14	GB/WR	PNFL	65	A, L
1214	COACHES SUITE	CPT	20	RR		BLACK	CMU	PNFL,PT	60,13	AB-22	PRF	80	H
CAMERA MEZZANINE													
2000	CAMERA MEZZANINE	CONC/SCPS	-	RR		BLACK	CMU	PNFL	60	AB-22	PRF	80	

#	MANUFACTURER	TYPE / FINISH	NUMBER	COLOR	SIZE	NOTES
PT	PORCELAIN TILE					
10	RBC TILE AND STONE	FORMAT - RECTIFIED	ALF4	MOSS	18X18	GROUT: MAFBI BIO BLOCK #59 IVORY
11	RBC TILE AND STONE	FORMAT - BATTISCOPA	SQ4	WHITE	4X18	GROUT: MAFBI BIO BLOCK #59 IVORY
12	RBC TILE AND STONE	FORMAT - RECTIFIED	ALF1	WHITE	18X18	GROUT: MAFBI BIO BLOCK #59 IVORY
13	RBC TILE AND STONE	FORMAT - RECTIFIED	SQ1	WHITE	12X24	GROUT: MAFBI BIO BLOCK #59 IVORY
14	RBC TILE AND STONE	FORMAT - RECTIFIED	SQ4	MOSS	12X24	GROUT: MAFBI BIO BLOCK #59 IVORY
15	RBC TILE AND STONE	FORMAT - RECTIFIED	ALF5	BLACK	18X18	GROUT: MAFBI BIO BLOCK #59 IVORY
CPT	CARPET					
20	TANULUS	LANDSCAPE COLOURS	03223-65011	FORGED IRON	MODULAR	RANDOM INSTALLATION
21	MILLIKEN CONTRACT	SUITABLE - WOVEN THREADS	216	VISTA BLUE	50 CM	MONOLITHIC INSTALLATION
22	MILLIKEN CONTRACT	SUITABLE - WOVEN THREADS	209	CHICORY	50 CM	MONOLITHIC INSTALLATION
23	LEES	STEP IN STYLE - WALK OFF CARPET TILE	547	BLUE WAVE	24" X 24"	QUARTER TURN INSTALLATION
VET	VINYL ENHANCED TILE					
30	AZROCK	AZTERRA	AT102	BUFFED CONCRETE	12X12	
RB	RUBBER BASE					
40	JOHNSONITE	4" TRADITIONAL RUBBER COVE BASE	29	MOON ROCK	4"	
PRF	PAINT					
60	ICI	SEE SPEC	A0084	WESTERN NAVAJO		
61	PPG	SEE SPEC	S1515	STONEHENGE		
62	SHERWIN WILLIAMS	SEE SPEC	SW6128	BLONDE		
63	PPG	SEE SPEC	S495	QUICKSILVER		
64	ICI	SEE SPEC	A1477	ROYAL TREATMENT		
65	ICI	SEE SPEC	A0113	WHITE HIGH HIDING RM		
66	ICI	SEE SPEC	A0200	BUTTERS COTTON TEMPEST		
67	ICI	SEE SPEC	A0730	AMISH LINEN		
PLAM	PLASTIC LAMINATE					
70	PRONITE	PLASTIC LAMINATE - SUEDE FINISH	AV981	IL PALO PAPEL		PLAM FOR PHENOLIC TOILET PARTITIONS
71	PRONITE	PLASTIC LAMINATE - SUEDE FINISH	AB081	AZZURRA		PLAM FOR CASEWORK AT WORKROOM
SFS	SOLID POLYMER SURFACE					
73	FORMICA	SOLID SURFACE	753	EARTHEN		USE AT WINDOW STOODS AND CASEWORK
74	STARON	SOLID SURFACE - TEMPEST	FM185	MILESTONE		
AB	ACCOUSTICAL BOARD CEILING					
80	ARMSTRONG CEILING	ULTIMA BEVELED TEGULAR	1912	WHITE	9/16"	9/16" SUPRAPINE GRID
MISCELLANEOUS						
101	MURAGE	ENGINEERED PREFINISHED WOOD FLOORING	N/A	NATURAL MAPLE		
101	ALGOMA	SUICED WHITE MAPLE	94-4370	N/A		WOOD DOORS, ALL WOOD TRIM AND CASEWORK TO MATCH.
102	NATIONAL WALLCOVERING	TRANSFORMATIONS - ELEGANCE PANEL FABRIC	132-08	NIGHT SKY	54" WIDE	CONTACT PEGGY SENDOBY WITH NATIONAL WALLCOVERING 314.570.6255
103	NOT USED					
104	BALL CONTRACT	HORIZONTAL METAL MINI BLINDS	405	GRAY DAWN	1" SLATS	
105	REMI-TE	REX GLASSGRID WITH SUBRASAAL	66	SILVER		

A

B

FINISH ABBREVIATIONS	
AB-22	ACCOUSTICAL BOARD CEILING (2"x2")
AB-24MR	ACCOUSTICAL BOARD CEILING (2"x4" MOISTURE RESISTANT)
AB-24	ACCOUSTICAL BOARD CEILING (2"x4")
AB-24MR	ACCOUSTICAL BOARD CEILING (2"x4" MOISTURE RESISTANT)
AP	ACCOUSTICAL PANEL
BL	HORIZONTAL BLINDS
BV	VERTICAL BLINDS
BBM	BAMBOO FLOORING
BRK	BRICK
CMU	CONCRETE MASONRY UNITS
CMU/GF	CONCRETE MASONRY UNIT (GROUND FACE OR BURNISHED)
CMU/S	CONCRETE MASONRY UNIT (STANDARD 8 X 8 SCORED)
COM	MATERIAL THAT IS SELECTED BY OWNER. PROVIDED BY CONTRACTOR.
CONC	CONCRETE
CONC/SCPS	CONCRETE FLOORING WITH SPECIAL COATING PENETRATING SEALER
CPT	CARPET
CRK	CORK FLOORING
CT	CERAMIC TILE
CTB	CERAMIC TILE BASE
EX	EXISTING
EXPD	EXPOSED
F	FABRIC
FRP	FIBREGLASS REINFORCED PANEL
FWC	FABRIC WALLCOVERING
GB	GYPSUM WALLBOARD (STANDARD)
GB-WR	GYPSUM WALLBOARD (WATER RESISTANT)
G	GLASS
GLT	GLASS TILE
LIN	LINOLEUM FLOORING
MAT	RECESSED ENTRY MAT
MTL	METAL
N	NONE
OTA	OPEN TO ABOVE
PLAM	PLASTIC LAMINATE
PLAS	PLASTER - STANDARD
PRF	PAINT - SEE SPECIFICATION
PNF-E	PAINT - EPOXY
PNFL	PAINT - LATEX
PNF-WDF	PAINT - WET DRY FALL
PRF	REFINISHED
PT	PORCELAIN TILE
PTB	PORCELAIN TILE BASE
PWP	PREFINISHED WALL PANELS
RB	RUBBER BASE
RB-T	RUBBER TILE FLOORING
RSTR	RUBBER STAIR TREAD & RISERS
SF	FABRIC SHADES
SC	SPECIAL COATING - SEE SPECIFICATION
SC-E	SPECIAL COATING - EPOXY
SC-GS	SPECIAL COATING - GRAFFITI SEALER
SC-PS	SPECIAL COATING - PENETRATING SEALER
SFS	SOLID POLYMER SURFACE
SF	SPECIAL SPORTS FLOORING
STG	RUBBER STAIR STRINGER
STL	STEEL
STR	STAIR
STR	STRUCTURE
SV	SHEET VINYL FLOORING
TRF	TURF
VCT	VINYL COMPOSITION TILE
VET	VINYL ENHANCED TILE
VRB	VENTED RUBBER BASE
VWC	VINYL WALL COVERING
WD	WOOD FLOORING
WDA	WOOD ATHLETIC FLOORING (AEROBIC)
WDP	WOOD ATHLETIC FLOORING (PERFORMANCE)
WDR	WOOD ATHLETIC FLOORING (RACQUETBALL)
WOB	WOOD BASE

C

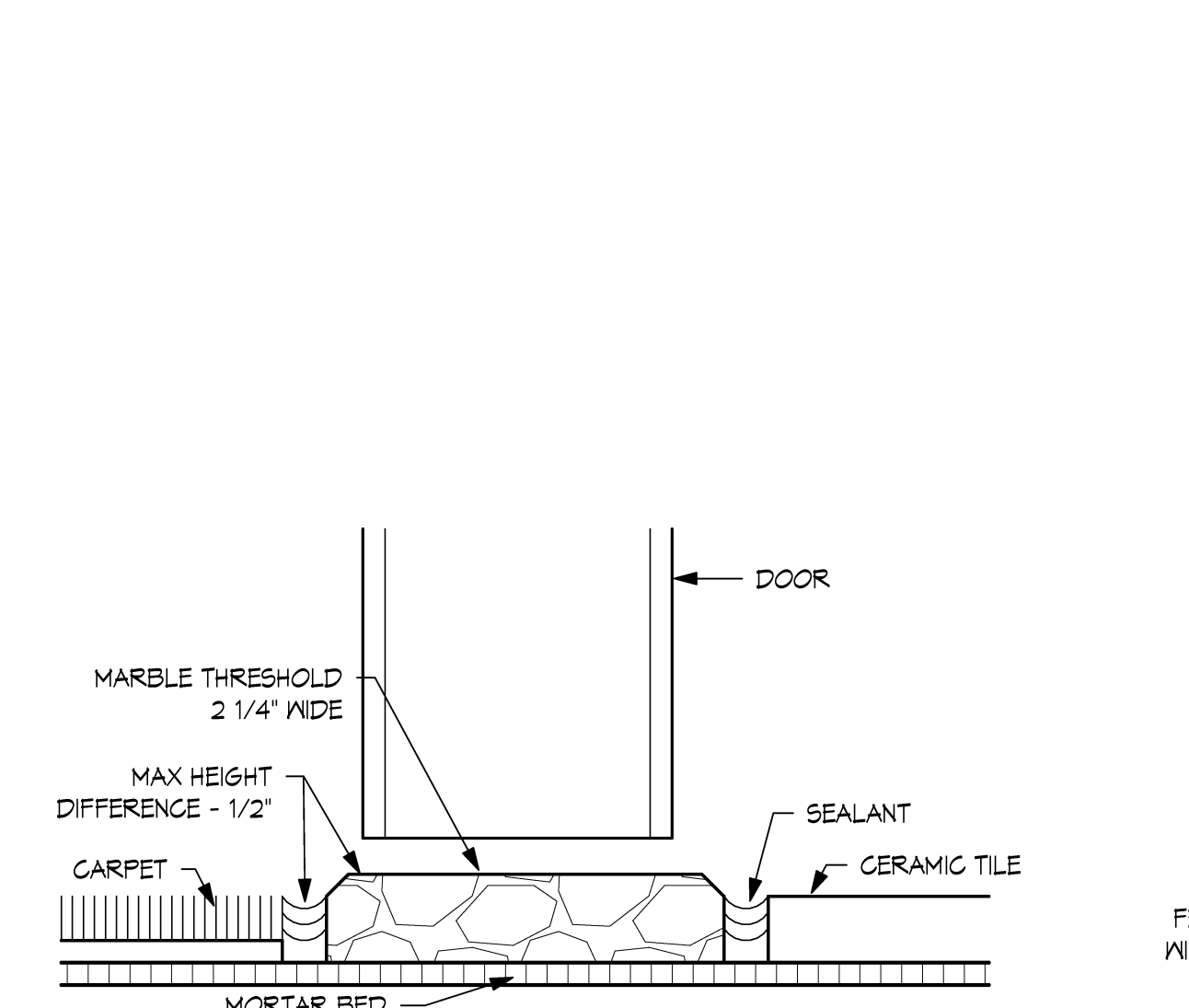
D

E

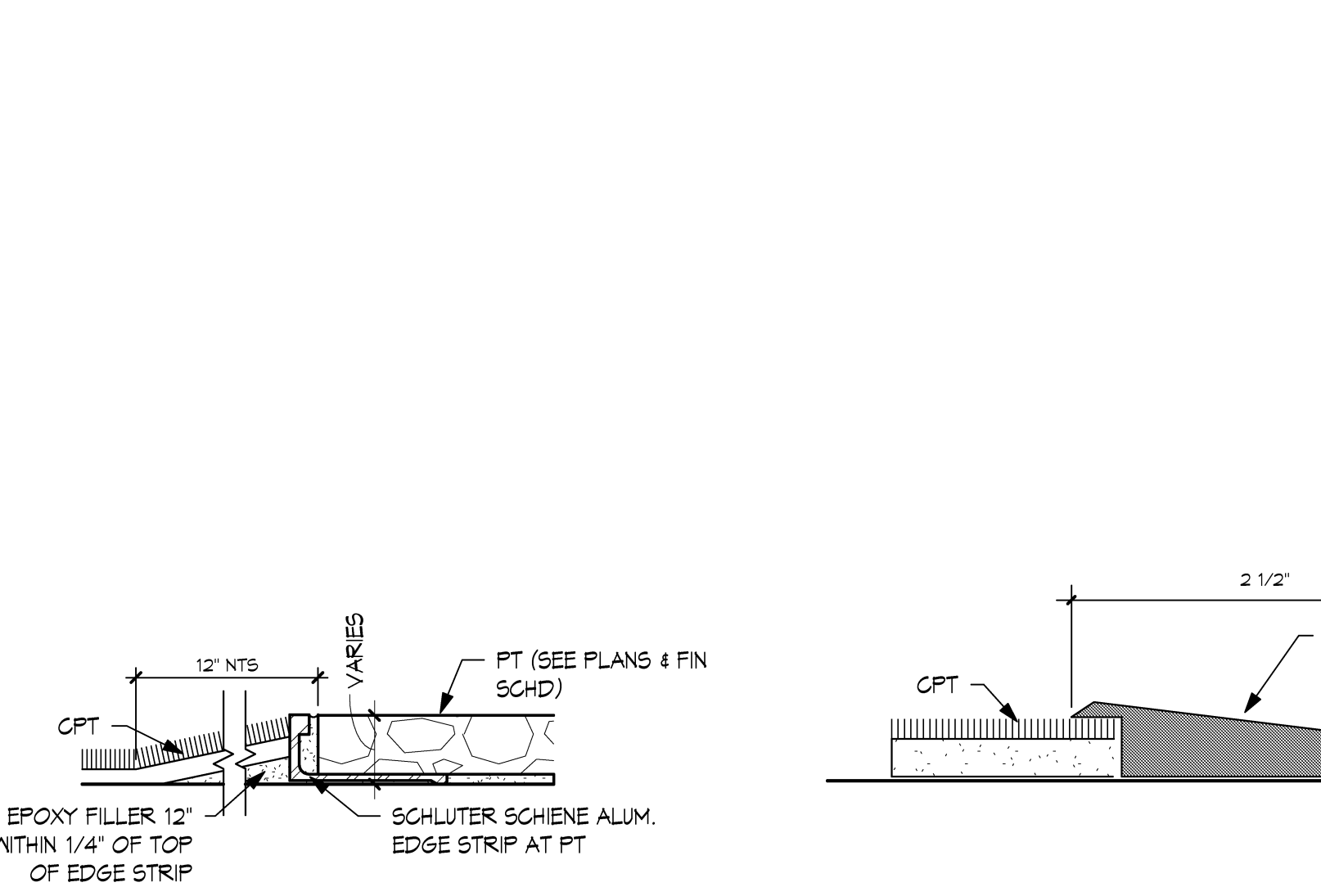
FINISH REMARKS	
A	PHENOLIC RESTROOM PARTITIONS TO MATCH PLAM-70. COUNTERTOP AND BACKSPASH TO BE SFS-74. SEE A9.02 FOR WALL TILE PATTERN.
B	CABINETS TO BE PLAM-71 WITH SFS-73 FOR COUNTERTOPS.
C	SEE A9.02 FOR FLOOR PATTERN THIS AREA.
D	SEE A9.02 FOR LOCATION OF ACCENT WALL.
E	SEE PLANS A9.02/AZ.01 FOR LOCATION OF CPT TO VET TRANSITION.
F	METAL SHIP LADDER TREADS, STRINGERS, RAILINGS & GUARD RAILINGS CHANNEL TO MATCH PNTF-61.
G	WORKSURFACE AND TRANSACTION TOP TO BE SFS-74. CASEWORK TO MATCH WD-101. HARDWARE TO BE US520/626.
H	PT-13 TO BE INSTALLED STACKED BOND. FLOOR TO CEILING AT WALL BEHIND WATER COOLER.
I	DECK AND TRUSSES TO MATCH PNTF-65.
J	SEE ELEVATIONS ON A9.02 FOR PAINT PATTERN.
K	FRP TO BE INSTALLED AT WALLS ADJACENT TO MOP SINK. SEE DETAIL ON AB-01.
L	FLOOR TILE TO BE INSTALLED STACKED BOND.

FINISH GENERAL NOTES	
1	* DENOTES COLOR NOT APPLICABLE.
2	REFER TO A9.02 FOR FLOORING PATTERNS.
3	TRANSITIONS TO BE FIELD VERIFIED BY FLOORING INSTALLER.
4	HOLLOW METAL DOOR AND WINDOW FRAMES TO MATCH PNTF-61
5	WOOD DOORS, CASEWORK AND TRIM TO MATCH WD-101
6	WINDOW STOODS TO BE SFS-73 W/ INTERIOR OFFICE WINDOWS LOOKING INTO GYM.
7	8 1/4" DIA TO BE LOCATED ON ALL OFFICE AND CONFERENCE ROOM WINDOWS. NO BLINDS AT SIDE LIGHTS.
8	TILE (SEE FINISH SCHEDULE FOR SPECIFIC TILE) TO BE LOCATED FROM FINISH FLOOR TO CEILING ON WALL BEHIND TOILETS ONLY. NO PTB THIS WALL. SEE A9.02 FOR TILE PATTERN.
9	ALL BACKBOARDS AND DISPLAY CASES TO RECEIVE COMF-102.

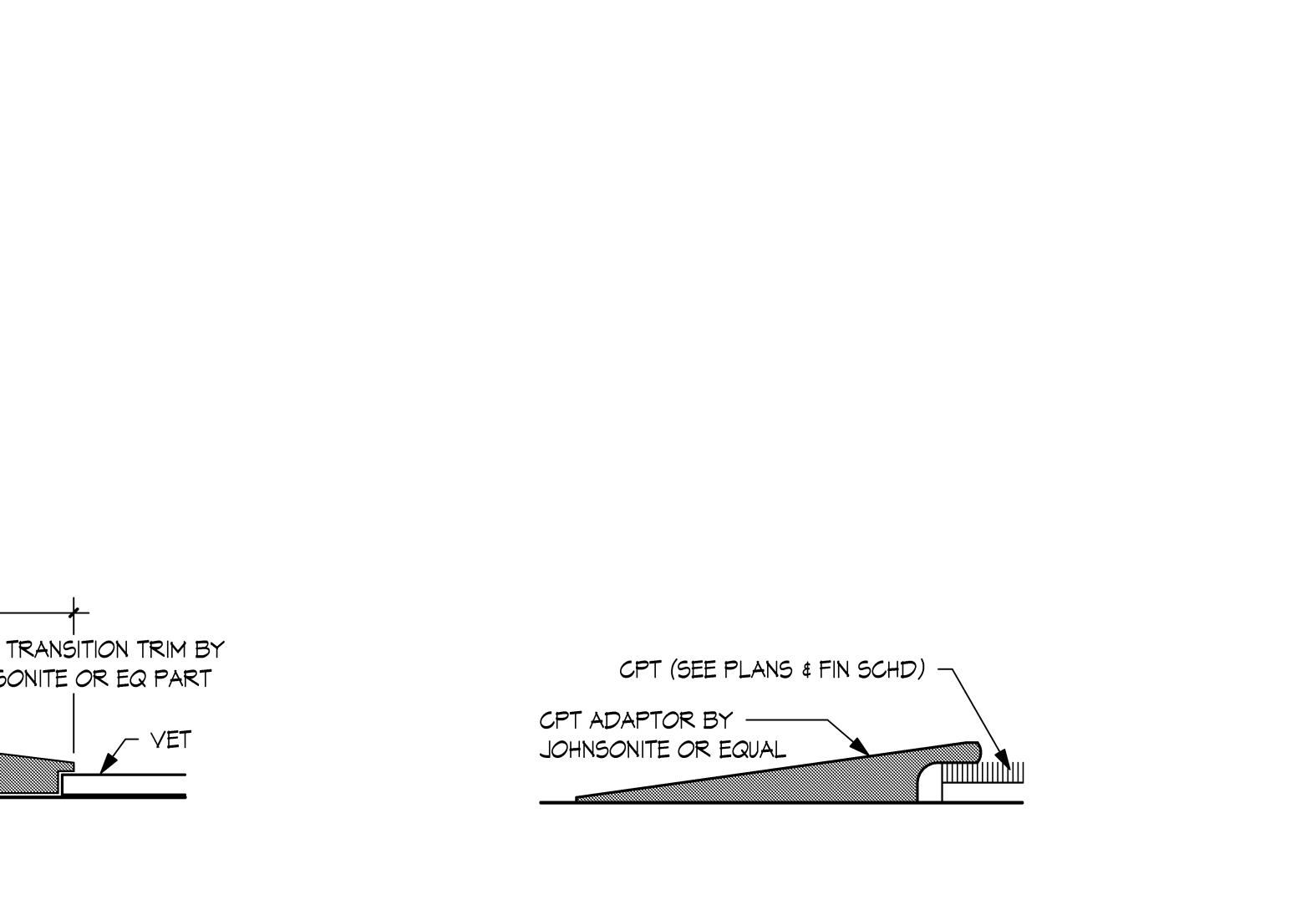
TRANSITION SCHEDULE			
TRANSITIONS	MANUFACTURER	STYLE	FINISH
CPT TO PT	SCHULTER	SCHENE	AE
CPT TO VET	JOHNSONITE	CTA-29K	MOON ROCK
CPT TO CONC	JOHNSONITE	CTA-29P	MOON ROCK
PT TO WD	SCHULTER	RENOUT	AE
AT RESTROOMS	N/A	MARBLE THRESHOLD	MARBLE - SEE SPEC.



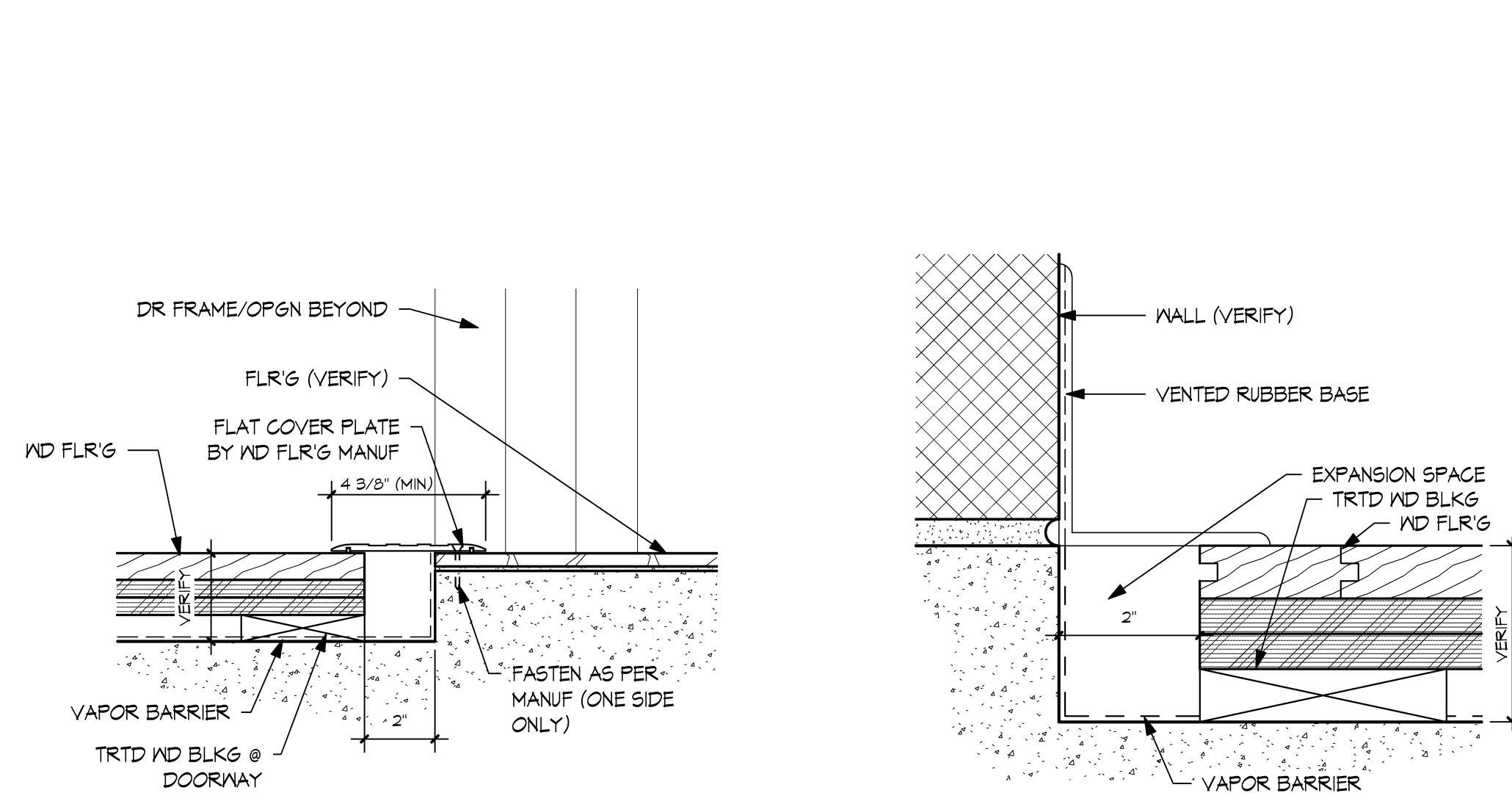
F1 TYP - MARBLE THRESHOLD  
SCALE | 1:1



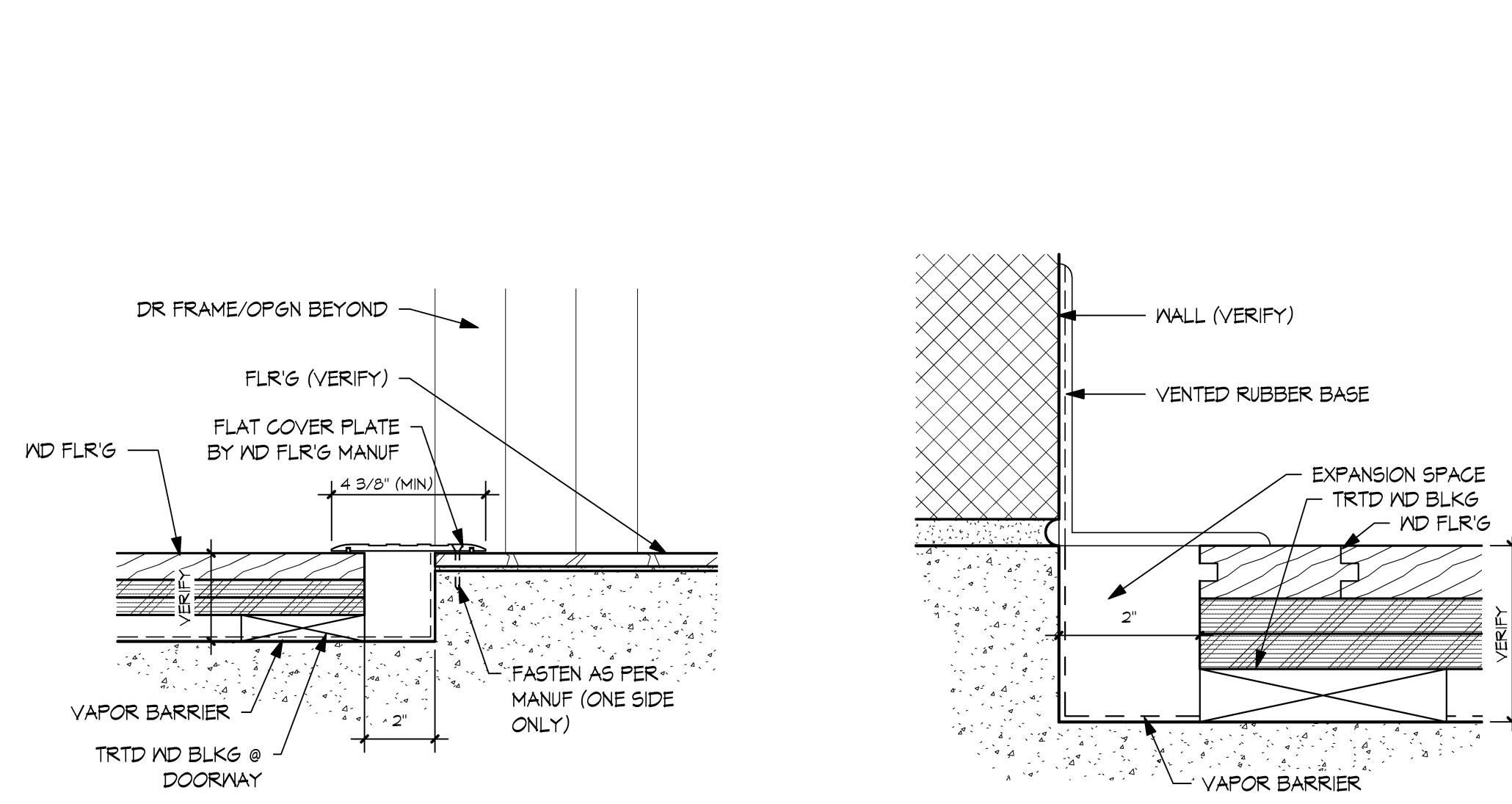
F2 TYP - CPT TO TILE  
SCALE | 1:1



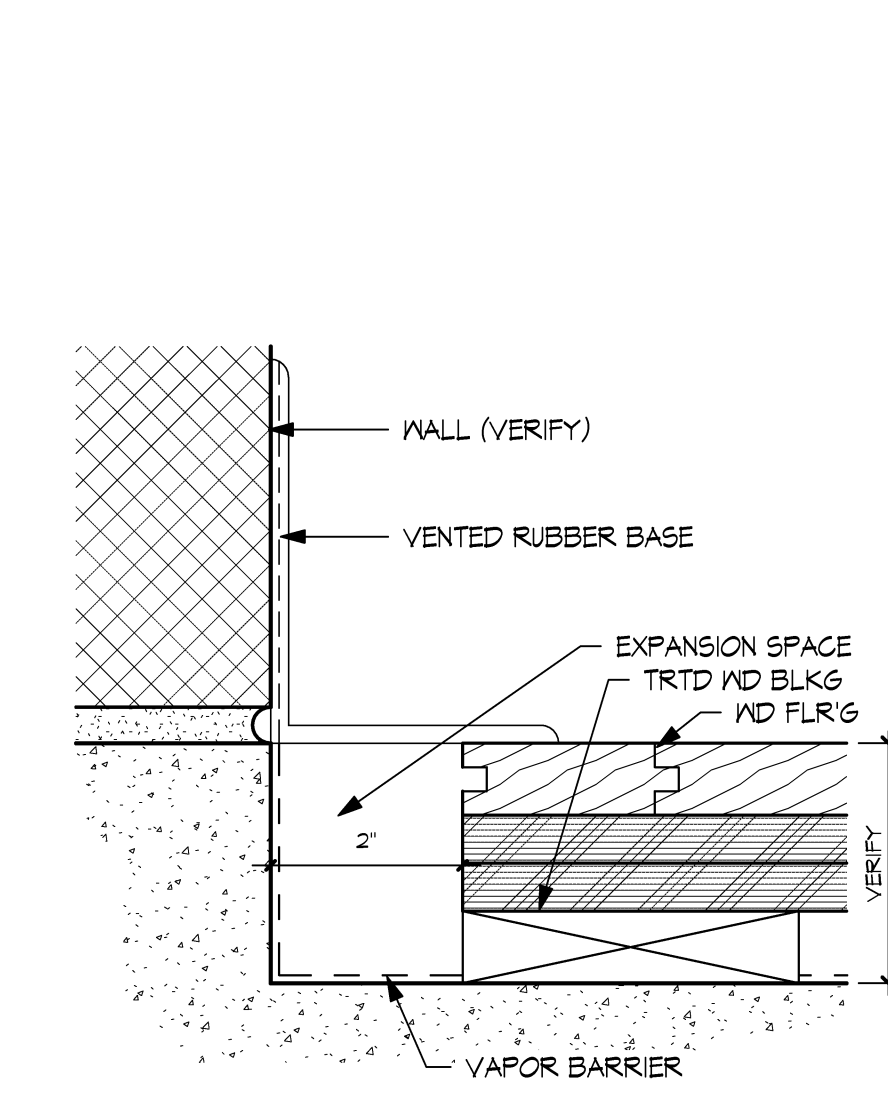
F3 TYP - CPT TO VET  
SCALE | 1:1



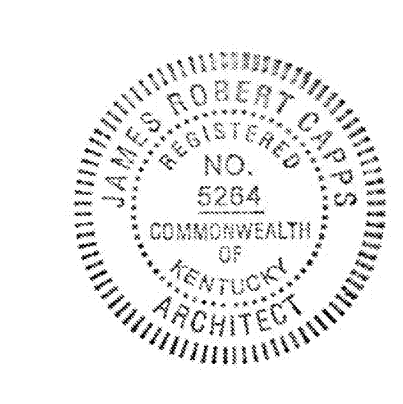
F4 TYP - CONC TO CPT  
SCALE | 1:1



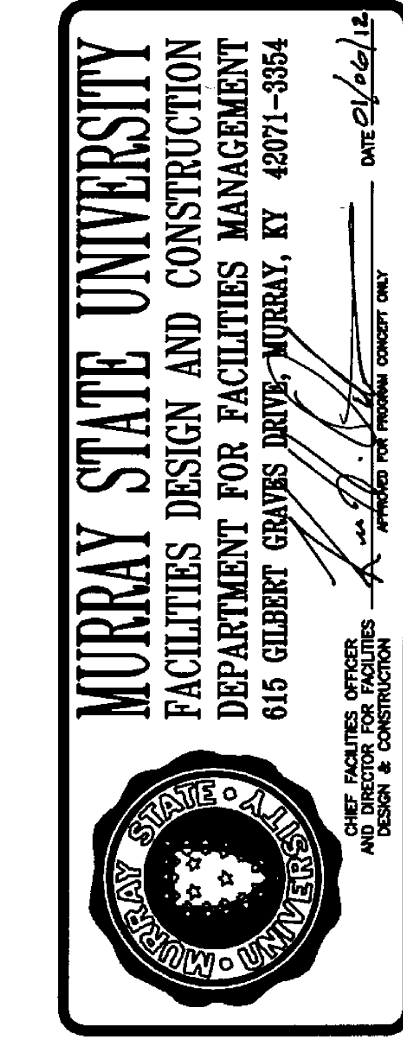
F5 TYP - WD-P FLR TRANS  
SCALE | 3\"/>



F6 VRB  
SCALE | 6\"/>



**Hastings+Chivetta**  
 ARCHITECTURE • PLANNING • ENGINEERING  
 6275 Embury, Suite 500 | Denver, Colorado, 80221 | Tel: 303.733.8233 | www.hastingschivetta.com  
 CIVIL, BLOCK, FRAMEWORK, WORKMAN ENGINEERING & TESTING, INC., 1715 DUNDIG DRIVE, MURRAY, KENTUCKY 42071  
 CHIVE & TESTINO INC., 465 N. COURT ST., WARRIOR, ALABAMA 36298  
 MPE-MARCUM ENGINEERING, LLC, 500 SOUTH 77TH STREET, PADUCAH, KENTUCKY, 40201



**SPORTS PRACTICE FACILITY**  
**MURRAY STATE UNIVERSITY**  
 MURRAY, KENTUCKY  
 BID SET - 2012-01-04



REVISIONS	
Date	2012-01-04
H+C Project No	2983.00
FDC Project No	10-007
BFW Project No	11194
M	