

NUMBER	WIDTH		HEIGHT	DOOR TYPE	FRAME TYPE	RATING	HDW GROUP	ALUM HDW	DETAILS			REMARKS	
	LEAF 1	LEAF 2							HEAD	JAMB	SILL		
LOWER LEVEL													
T000A	6'-1 3/4"		7'-10"	AL-6	AL-11	-		15		A6/A6.01 SIM	D1/A6.03	16	
T000B	6'-1 3/4"		7'-10"	AL-6	AL-11	-		16		A6/A6.01 SIM	D1/A6.03	16	
D101A	3'-0"		7'-10"	WD-2	HM-4	-	11			D3/A6.01		4,15,17	
D101B	3'-0"		7'-10"	WD-6	HM-4	-	10			B1/A6.01 SIM			
D101C	3'-0"		7'-10"	WD-6	HM-4	-	10			B1/A6.01 SIM			
D101D	3'-0"		7'-10"	WD-1	HM-4	-	05			D1/A6.01	D2/A6.01		
D101E	3'-0"		7'-10"	WD-2	HM-4	-	11			D3/A6.01		4,15,17	
D101F	4'-0"		7'-10"	WD-2	HM-4	-	08			A6/A6.03	D2/A6.01 SIM	C6/A6.03	17
T100A	3'-8"		7'-10"	WD-2	HM-4	-	06			A6/A6.03	D2/A6.01	C6/A6.03	4
T100B	3'-8"	3'-6"	7'-10"	HM-1	HM-4	-	12			F2/A6.03	A1/A6.01	C1/A6.03	2,4,16
T101	3'-0"		7'-10"	WD-1	HM-4	-	01			D3/A8.01	D3/A8.01		11
T102	3'-0"		7'-10"	WD-1	HM-4	-	02			D3/A8.01	D3/A8.01		11
T103A	3'-0"		7'-10"	WD-1	HM-4	-	01			D3/A8.01	D3/A8.01		11
T103B	3'-0"		7'-10"	WD-1	HM-4	-	01			D3/A8.01	D3/A8.01		11
T103C	3'-0"		7'-10"	WD-1	HM-4	-	01			D3/A8.01	D3/A8.01		11
T105	3'-0"		7'-10"	WD-1	HM-4	-	01			D3/A8.01	D3/A8.01		11
T106	3'-0"		7'-10"	WD-1	HM-4	-	01			D3/A8.01	D3/A8.01		11
T107	3'-0"		7'-10"	WD-1	HM-4	-	01			D3/A8.01	D3/A8.01		11
T108	3'-0"		7'-10"	WD-1	HM-4	-	01			D3/A8.01	D3/A8.01		11
T109	3'-4"	3'-6"	7'-10"	WD-1	HM-4	-	03			C3/A6.01			
T110	3'-4"		7'-10"	WD-1	HM-4	-	04			B1/A6.01			
T111	3'-0"	3'-0"	7'-10"	WD-1	HM-4	-	07			B1/A6.01			
T112	3'-0"	3'-0"	7'-10"	WD-1	HM-4	-	07			B1/A6.01			
T113	3'-0"		7'-10"	WD-1	HM-4	-	09			B1/A6.01 SIM		18	
T114	3'-0"		7'-10"	HM-1	HM-4	-	13			D3/A8.01	D3/A8.01		
T200	3'-0"		7'-10"	AL-6	AL-10	-		14		A6/A6.01	D1/A6.03	16	
T201	3'-0"		7'-10"	WD-1	HM-4	-	01			D3/A8.01	D3/A8.01		11
T202	3'-0"		7'-10"	WD-1	HM-4	-	02			D3/A8.01	D3/A8.01		11
T203A	3'-0"		7'-10"	WD-1	HM-4	-	01			D3/A8.01	D3/A8.01		11
T203B	3'-0"		7'-10"	WD-1	HM-4	-	01			D3/A8.01	D3/A8.01		11
T203C	3'-0"		7'-10"	WD-1	HM-4	-	01			D3/A8.01	D3/A8.01		11
T205	3'-0"		7'-10"	WD-1	HM-4	-	01			D3/A8.01	D3/A8.01		11
T206	3'-0"		7'-10"	WD-1	HM-4	-	01			D3/A8.01	D3/A8.01		11
T207	3'-0"		7'-10"	WD-1	HM-4	-	01			D3/A8.01	D3/A8.01		11
T208	3'-0"		7'-10"	WD-1	HM-4	-	01			D3/A8.01	D3/A8.01		11
T209	3'-4"	3'-6"	7'-10"	WD-1	HM-4	-	03			C3/A6.01			
T210	3'-4"		7'-10"	WD-1	HM-4	-	04			D3/A8.01	D3/A8.01		11
T211	3'-0"		7'-10"	WD-1	HM-4	-	05			D3/A8.01	D3/A8.01		11
T213	3'-0"		7'-10"	WD-1	HM-4	-	09			D3/A8.01	D3/A8.01		18
T214A	3'-0"	3'-0"	7'-10"	WD-1	HM-4	-	13			D3/A8.01	D3/A8.01		18
T214B	3'-8"		7'-10"	WD-2	HM-4	-	06			A6/A6.03	D2/A6.01 SIM	C6/A6.03	4
T300A	6'-2 1/4"		7'-10"	AL-6	AL-16	-		15		A6/A6.01	D1/A6.03	16,23	
T300B	6'-2 1/4"		7'-10"	AL-6	AL-18	-		17		A6/A6.01	D1/A6.03	16,23	
T300C	3'-0"	3'-0"	7'-10"	HM-1	HM-4	-		12A		F2/A6.03 SIM	A1/A6.01 SIM	C1/A6.03	2,4,23

FRAME NOTES:

- EXTERIOR ALUMINUM CURTAIN WALL FRAMES ARE BASED ON YKK-AMERICA CURTAIN WALL YCW 750 OG, UNO.
- INTERIOR ALUMINUM CURTAIN WALL FRAMES ARE BASED ON YKK-AMERICA CURTAIN WALL YCW 750 OG, UNO.
- ALL EXTERIOR GLAZING TO BE TYPE 1 UNO.
- ALL INTERIOR GLAZING TO BE TYPE 5 UNO.
- STANDARD JAMBS UNLESS OTHERWISE NOTED.
- HM MTL STOPS TO BE CONSTANT PER SIDE OF GLAZING & LOCATED ON PRIVATE SIDE OF GLASS TO INSURE SECURITY.
- TYPICAL GS JAMB, HINGE SIDE, TO BE 4" OFF FACE OF INTERIOR WALL, UNO.
- TYPICAL C&L JAMB, HINGE SIDE, TO BE 8" OFF FACE OF INTERIOR WALL, UNO.
- EXTRUDED METAL & BREAK METAL TRIM BY WINDOW MANUF UNO, FILL ALL VOIDS AT EXTERIOR METAL WITH RIGID INSULATION OR SPRAY FOAM INSULATION UNO.
- COORDINATE LOW VOLTAGE ELECTRICAL WIRING W/ FRAMES AS REQUIRED.
- GC TO DETERMINE SUPPLY OF WOOD DOORS IN ALUM FRAMES.
- FIELD VERIFY ALL OPENINGS BEFORE FABRICATION.

DOOR NOTES:

- SEE DOOR SCHEDULE FOR HEIGHT AND WIDTH OF DOOR.
- EXTERIOR ALUMINUM DOORS BASED ON YKK-AMERICA AP 400 HEAVY DUTY WITH STANDARD SQUARE STOPS, NO ADAPTERS AT JAMBS.
- RATED OPENINGS TO HAVE CORRESPONDING RATED GLAZING.
- FINISH ON CONTIGUOUS HINGES TO MATCH FRAME OR CUSTOM COLOR UNO.
- COORDINATE IN WALL MTL BLTG W/ DOOR STOPS, MHO, ETC.
- LOCATE FLRC TRANSITIONS UNDER DOOR UNO.
- FIELD VERIFY ALL OPENINGS BEFORE FABRICATION.

DOOR REMARKS:

- MAGNETIC HOLD OPEN(MHO)
- GALVANIZED 8 GLAZING WHERE APPLICABLE
- OPERATOR ACTIVATED BY ACTUATOR
- CARD READER / FOB ACCESS (ROUGH IN ONLY)
- REMOTE DOOR LOCK RELEASE
- KEYPAD ACCESS
- LOCAL ALARM
- EGRESS ONLY
- DELAYED EGRESS
- DOOR HARDWARE PROVIDED BY MANUF
- CONT HOOK ROOM SIDE
- UNDERCUT DOOR 1"
- RATED GLAZING
- TRANSLUCENT GLAZING
- LAMINATED GLAZING
- DOT DR THRESHOLD
- WD FLR DR THRESHOLD - BY WD FLR MANUFACTURE
- MARBLE THRESHOLD
- DUTCH DOOR
- DOOR SITS ON 6" CONC CURBS
- FRAME ONLY - NO DOOR OR HDWR
- DRESSING ROOM DOOR 12" AFF
- ALTERNATE SEE PLANS & SPEC FOR APPLICABLE ALTERNATE

(NOT ALL REMARKS MAY BE USED)

FRAME SCHEDULE

P/TYPE DESIGNATION	P/TYPE WIDTH	FRAME DEPTH
G131	4 7/8"	5 7/8"
G231	5 1/2"	6 1/2"
G331	6 1/8"	7 1/8"
G232	6 1/8"	7 1/8"
G332	6 3/4"	7 3/4"
G333	7 1/8"	8 1/8"
G141	5 1/4"	6 1/4"
G241	5 7/8"	6 7/8"
G341	6 1/2"	7 1/2"
G242	6 1/2"	7 1/2"
G342	7 1/8"	8 1/8"
G343	7 3/4"	8 3/4"
G161	7 1/4"	8 1/4"
G261	7 7/8"	8 7/8"
G361	8 1/2"	9"
G262	8 1/2"	9"
G362	9 3/8"	10"
G363	9 3/4"	10"
C06	5 3/8"	5 1/2"
C08	7 5/8"	5 3/4"
C10	9 5/8"	5 3/4"
C12	11 5/8"	5 3/4"

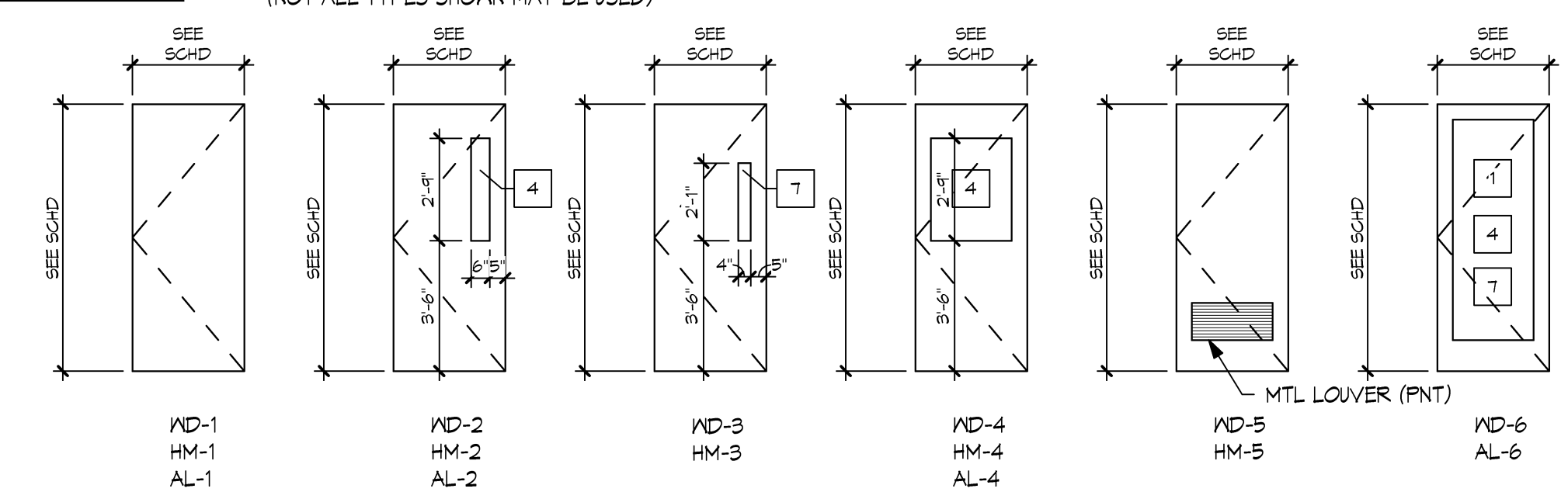
- NOTES:
- NOT ALL MAY BE USED.
 - THE MAXIMUM FRAME DEPTH SHALL BE 9".
 - SEE FRAME TYPE ELEVATIONS AND DOOR SCHEDULE FOR ADDITIONAL INFORMATION.

GLAZING LEGEND

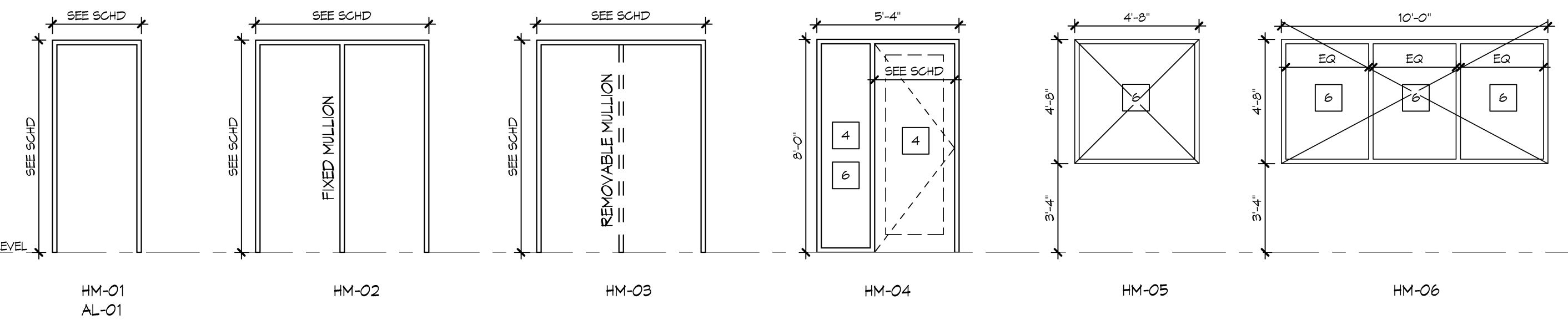
- GLASS TYPES
- 1 1" INSULATED GLASS
 - 2 1" INSULATED TEMPERED GLASS
 - 3 1" INSULATED SPANDREL GLASS
 - 4 1/4" TEMPERED GLASS
 - 5 1/4" CLEAR GLASS
 - 6 3/8" LAMINATED GLASS
 - 7 1/4" WIRE GLASS
 - 8 1/4" PATTERNED GLASS
 - 9 1" INSUL TEMPERED PANEL / LAMINATED PANE
 - 10 1" INSULATED METAL PANEL
- SUFFIX TYPES
- P PATTERN GLASS
 - S SPANDREL GLASS
 - T TRANSLUCENT GLASS

DOOR TYPES

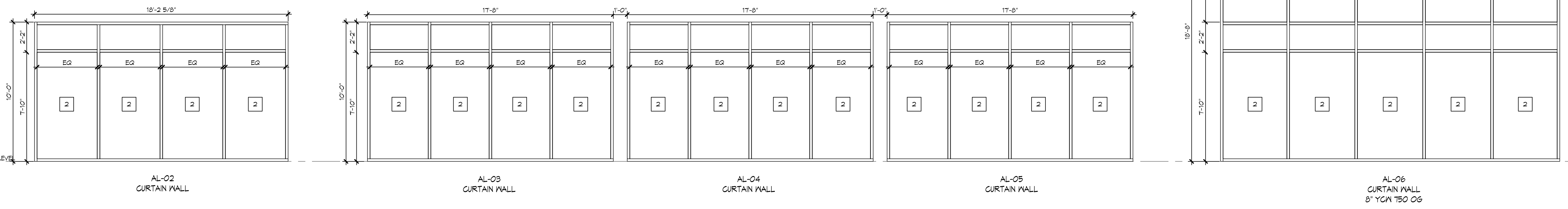
(NOT ALL TYPES SHOWN MAY BE USED)



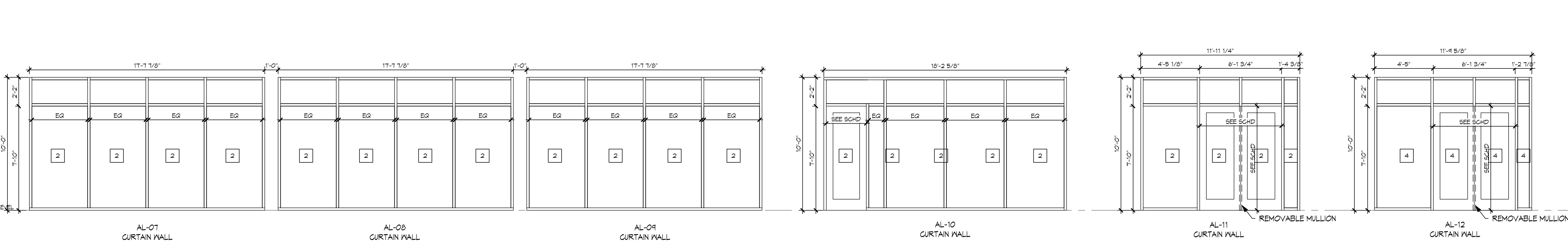
FRAME TYPES



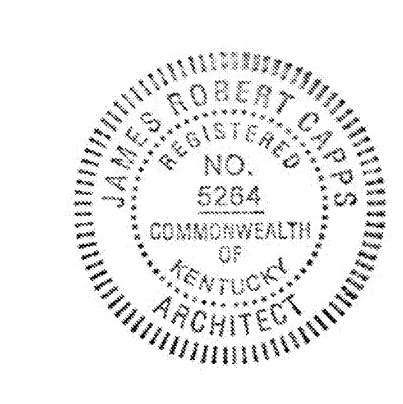
D



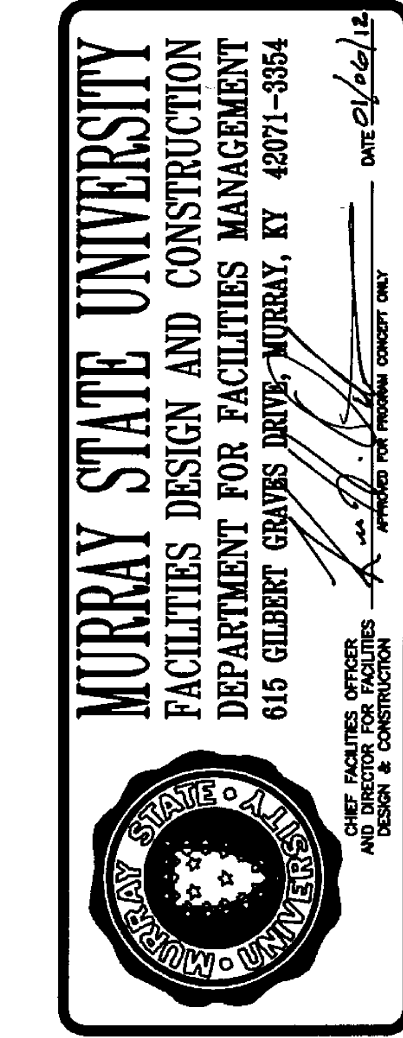
E



F



Hastings+Chivetta
 ARCHITECTURE • PLANNING • ENGINEERING
 6275 Embury, Suite 500 | 2nd Floor, Louisville, KY 40228 | Tel: 502.486.3233 | www.hastingschivetta.com
 CIVIL, BACON, FRANKS, WORKMAN ENGINEERING & TESTING, INC., 1715 DUNDIG DRIVE, MURRAY, KENTUCKY 42071
 CIVIL, BACON, FRANKS, WORKMAN ENGINEERING & TESTING, INC., 465 N. COURT ST., WARREN, ILLINOIS 62299
 MPE-MARCUM ENGINEERING, LLC, 500 SOUTH 17TH STREET, PADUCAH, KENTUCKY, 40201



SPORTS PRACTICE FACILITY
 MURRAY STATE UNIVERSITY
 MURRAY, KENTUCKY
 BID SET - 2012-01-04



REVISIONS	DATE	DESCRIPTION
1	2012-01-04	2012-01-04
2	2983.00	2983.00
3	10-007	10-007
4	11194	11194
5	11557	11557

A1.02