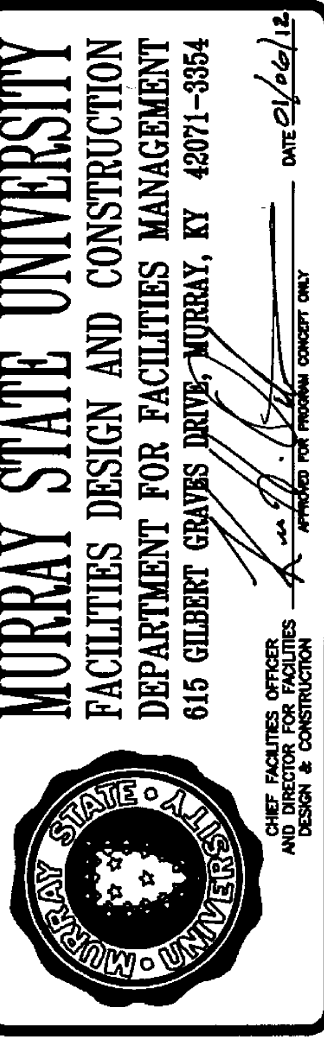


Hastings+Chivetta

ARCHITECTURE • PLANNING • ENGINEERING
6275 Emerald, Suite 500 | Louisville, KY 40228 | Phone: (502) 486-3131 | Fax: (502) 486-3133 | www.hastingschivetta.com

CIVIL, ARCHITECT, PLANNING, WORKMAN ENGINEERING & TESTING, INC., 1715 DUGLID DRIVE, MURRAY, KENTUCKY 42071
ELECTRICAL ENGINEERING & TESTING, INC., 465 N. COURT ST., MARION, ILLINOIS 62959
MPE-MARCUM ENGINEERING, LLC, 500 SOUTH 17TH STREET, PADUCAH, KENTUCKY, 42024



SPORTS PRACTICE FACILITY MURRAY STATE UNIVERSITY MURRAY, KENTUCKY BID SET - 2012-01-04



REVISIONS

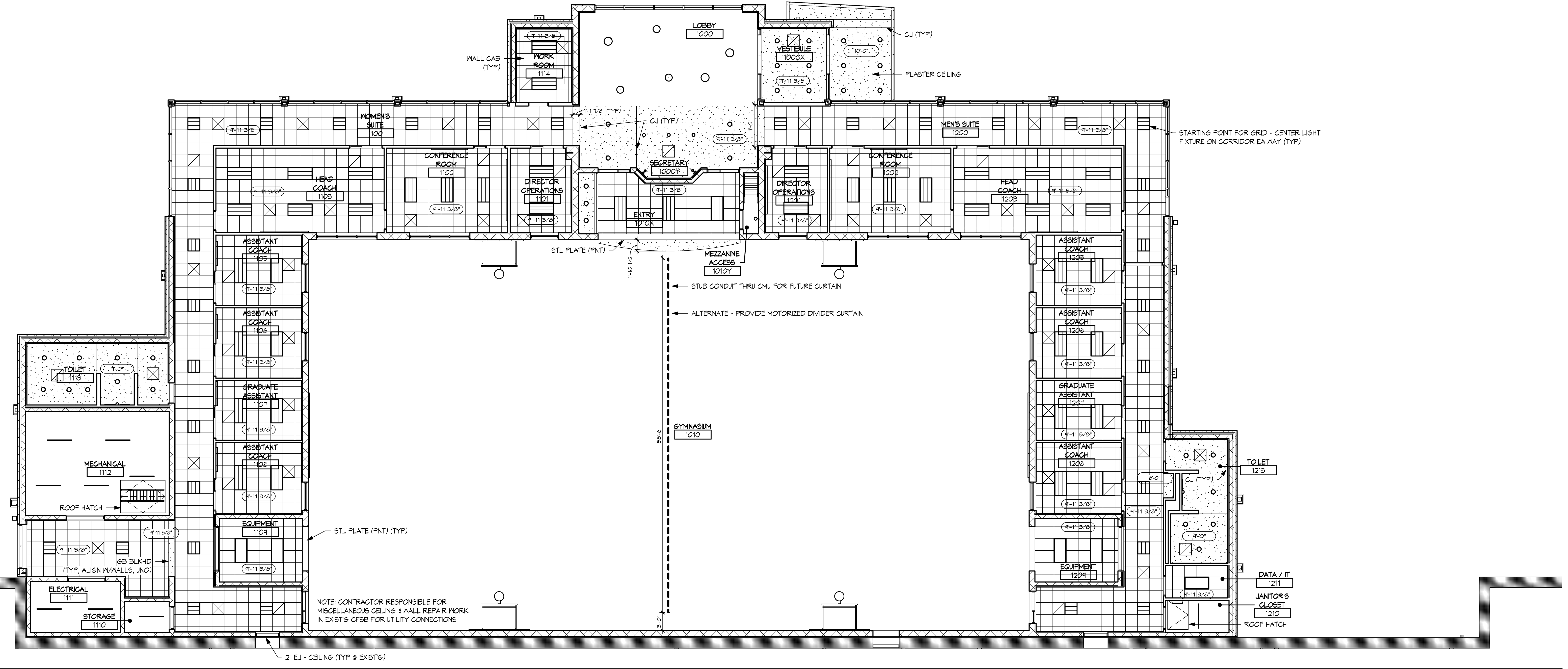
Date	2012-01-04
H+C Project No.	2983.00
FDC Project No.	10-007
BFW Project No.	11194
Marcum Project No.	11557
Sheet Name	RCP

A3.01

A

B

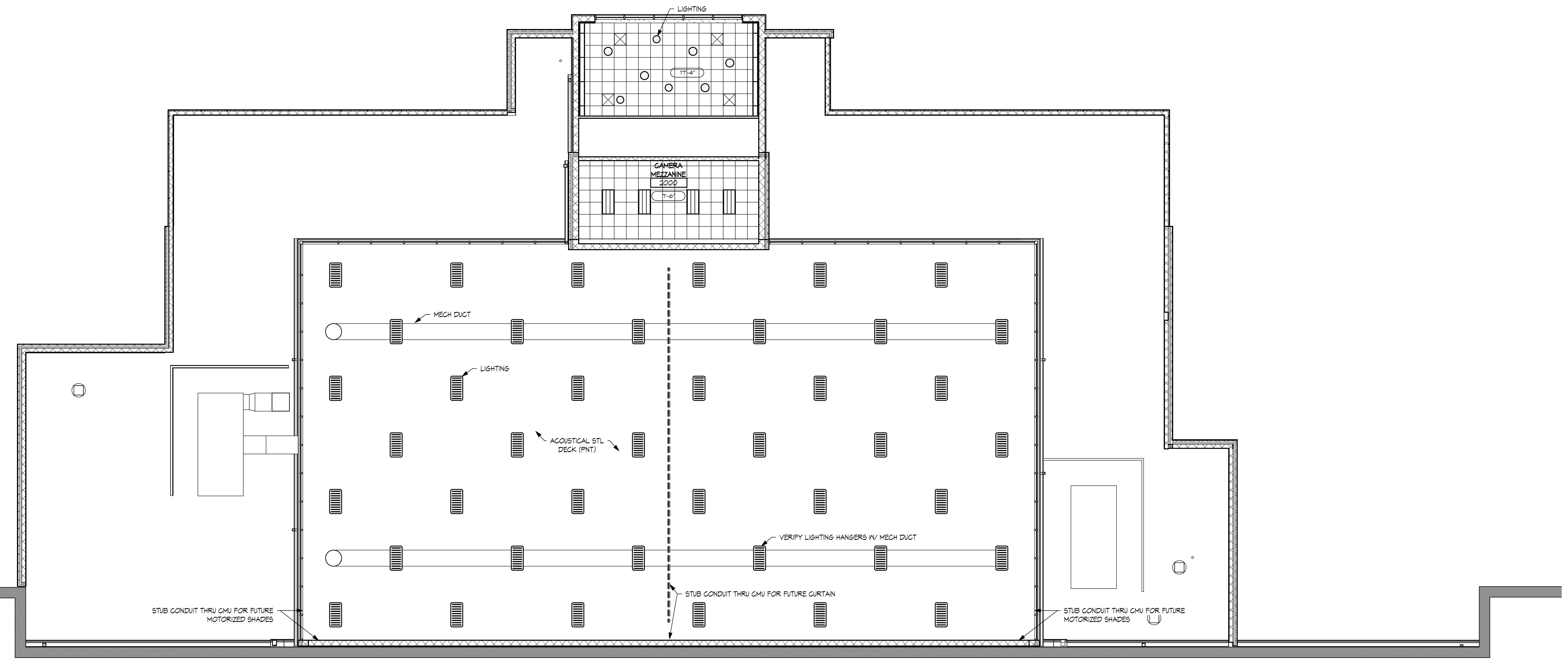
C



D

E

F



C:\Users\jchivetta\Documents\Projects\2983.00 SP-2012_rchivetta\1/6/2012 3:56:51 PM