

Hastings+Chivetta
 ARCHITECTURE • PLANNING • ENGINEERING
 629 Embury, Suite 500 | 2nd Floor, Murray, KY 40371 | Tel: 502.883.2833 | www.hastingschivetta.com
 CIVIL, ARCHITECT, PLANNING, WORKMAN ENGINEERING & TESTING, INC., 1715 DUGUID DRIVE, MURRAY, KENTUCKY 40371
 MECHANICAL, ELECTRICAL, PLUMBING & TESTING, INC., 465 N. COURT ST., WARREN, ILLINOIS 62259
 MPE - MARCELM ENGINEERING, LLC, 580 SOUTH 17TH STREET, PADUCAH, KENTUCKY, 40302

MURRAY STATE UNIVERSITY
 FACILITIES DESIGN AND CONSTRUCTION
 DEPARTMENT FOR FACILITIES MANAGEMENT
 616 GIBBERT DRIVE, MURRAY, KY 40371-3854
 MURRAY STATE UNIVERSITY
 1000 UNIVERSITY AVENUE
 MURRAY, KY 40371-3854

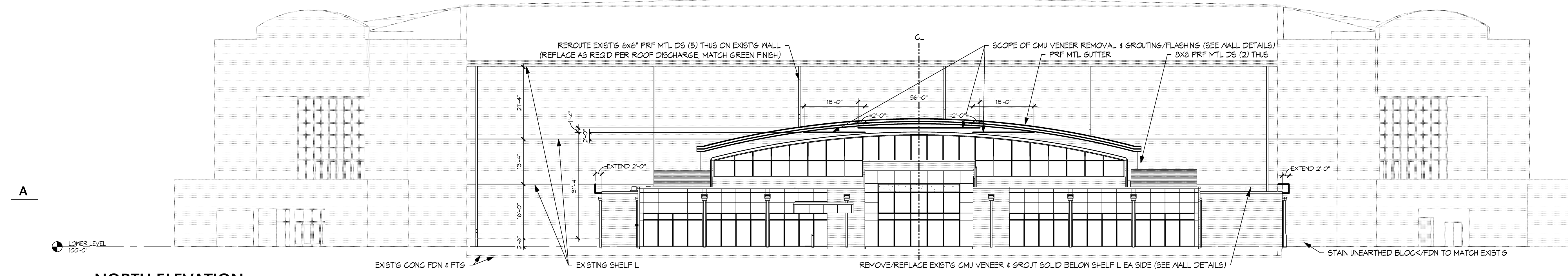
SPORTS PRACTICE FACILITY
 MURRAY STATE UNIVERSITY
 MURRAY, KENTUCKY
 BID SET - 2012-01-04

MURRAY STATE UNIVERSITY

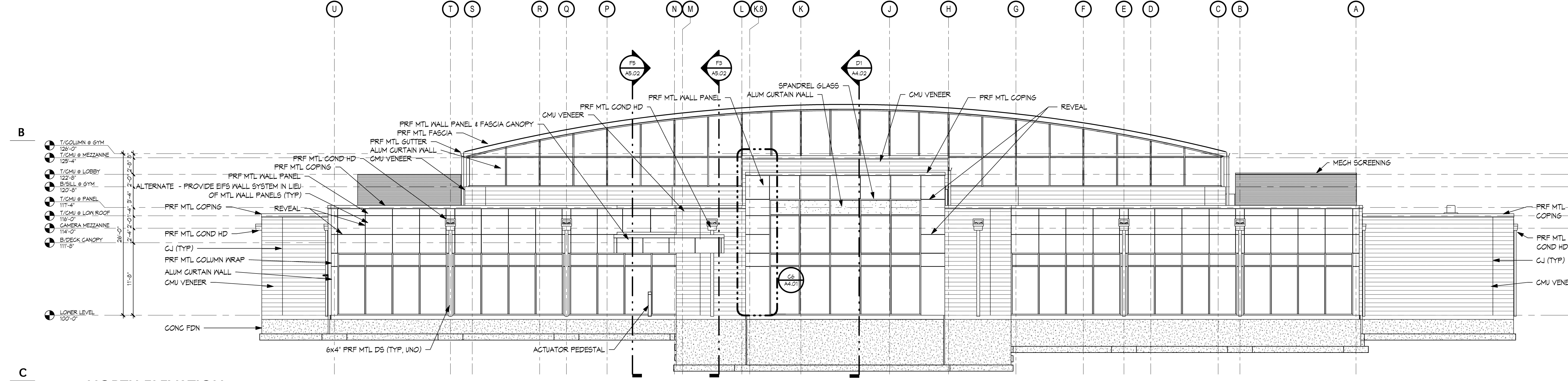
REVISIONS

Date	2012-01-04
H+C Project No.	2983.00
FDC Project No.	10-007
BFW Project No.	11194
Marcum Project No.	11557
Sheet Name	BUILDING ELEVATIONS

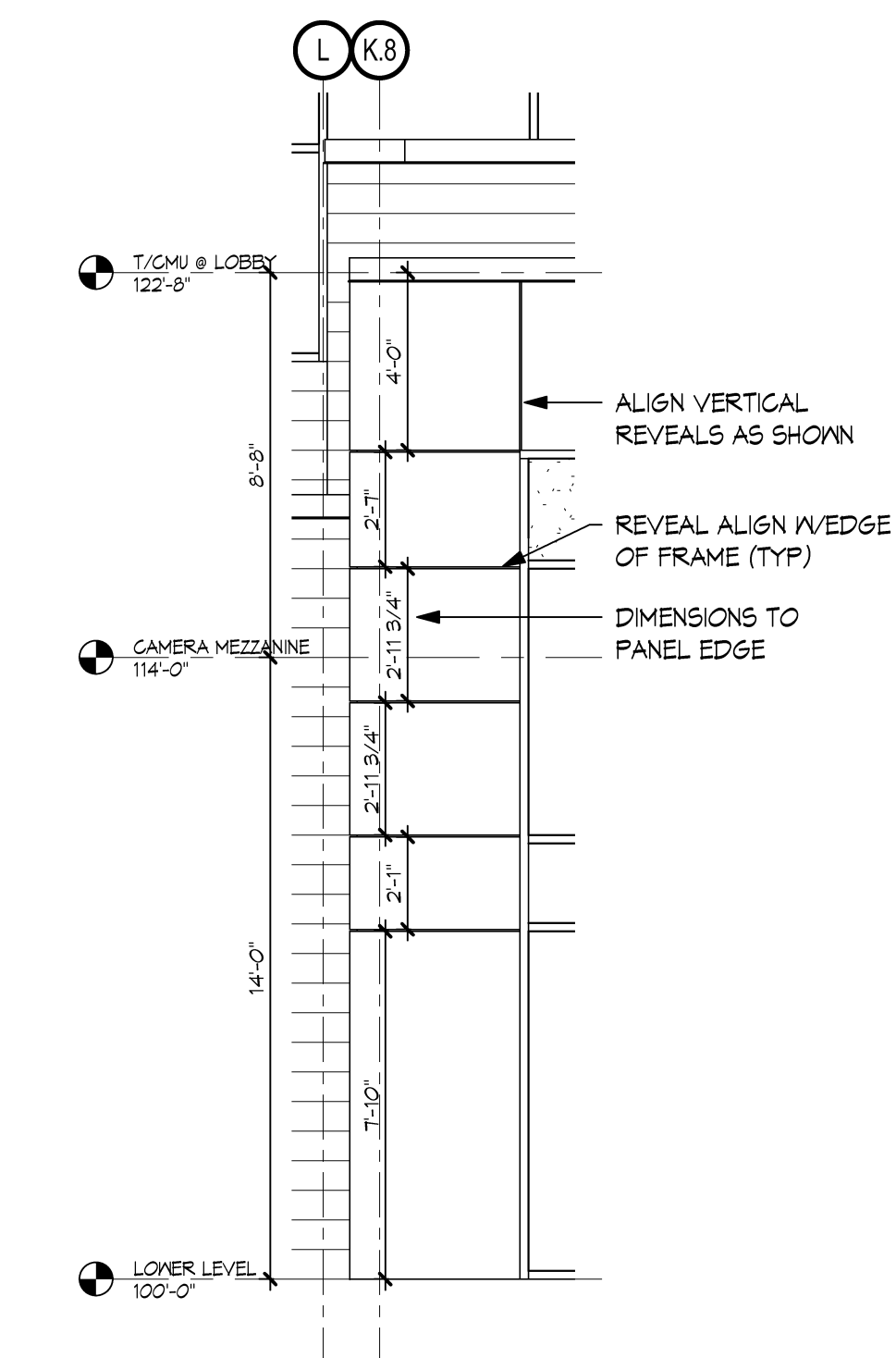
A4.01



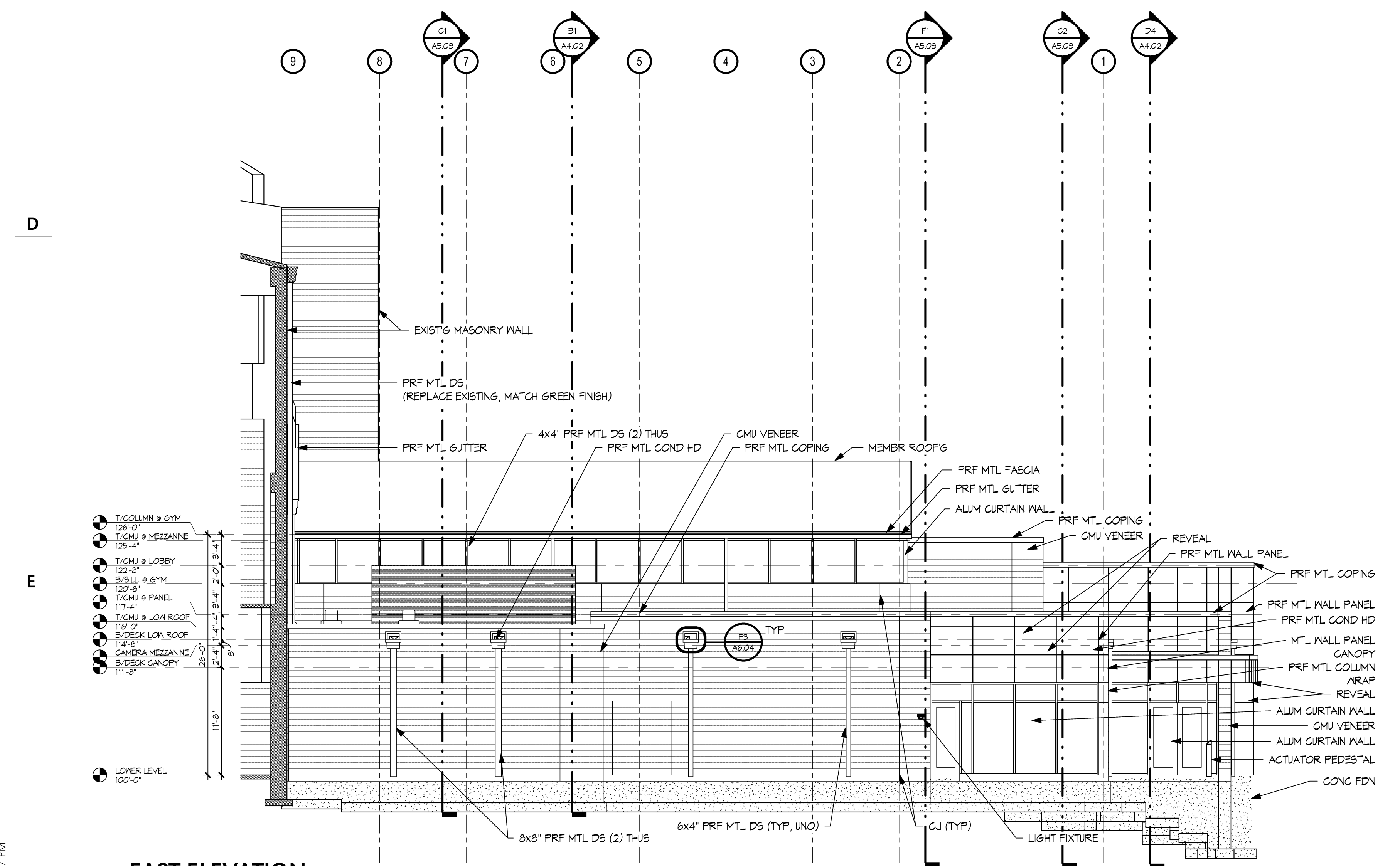
B1 NORTH ELEVATION
 SCALE | 1/16" = 1'-0"



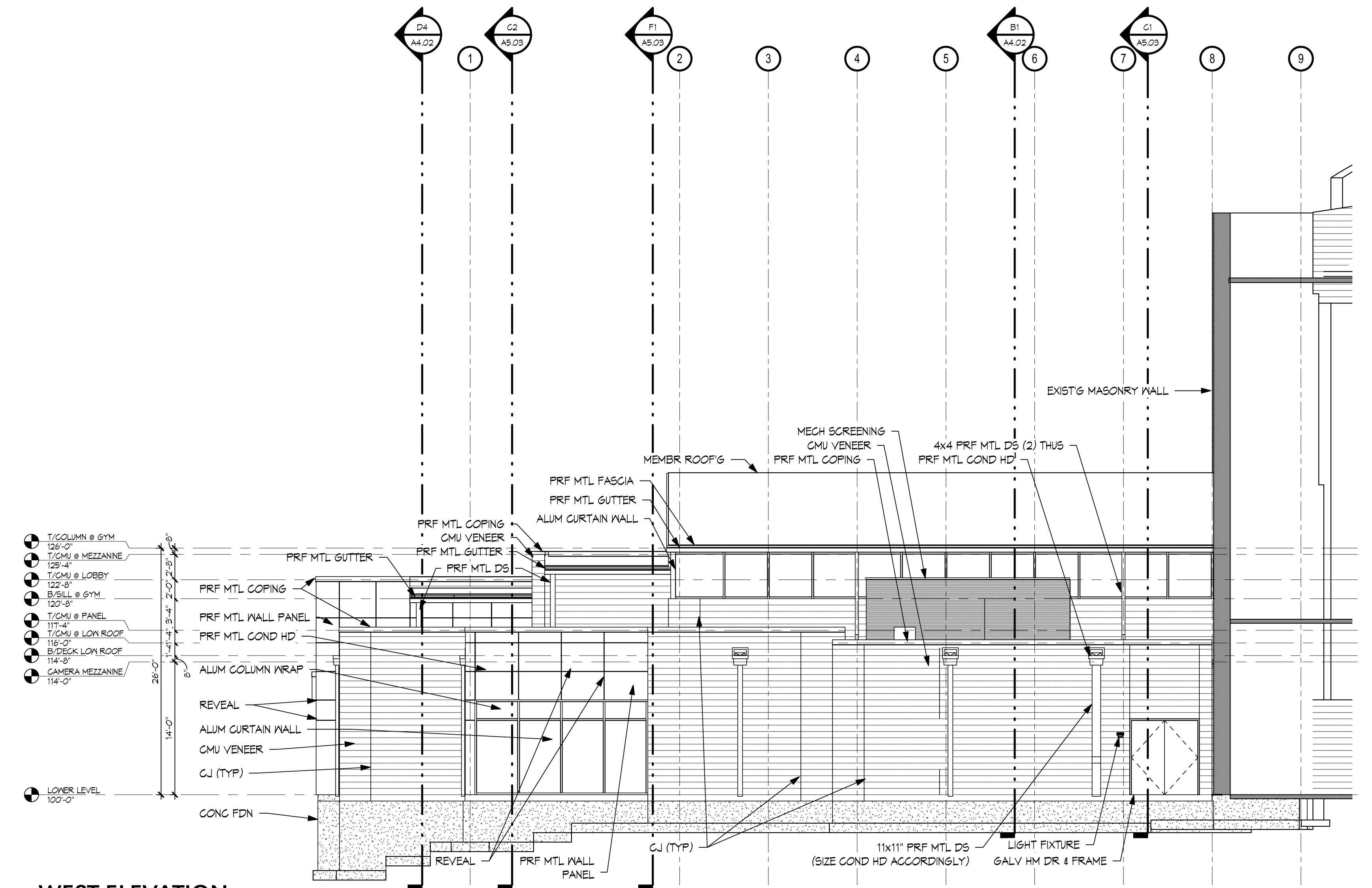
C1 NORTH ELEVATION
 SCALE | 1/8" = 1'-0"



C6 TYPICAL HORIZONTAL REVEALS
 SCALE | 1/4" = 1'-0"



F1 EAST ELEVATION
 SCALE | 1/8" = 1'-0"



F4 WEST ELEVATION
 SCALE | 1/8" = 1'-0"

C:\Users\johle\Documents\Projects\2983.00 SP-2012_coh\ehc
 1/6/2012 3:56:57 PM