

A

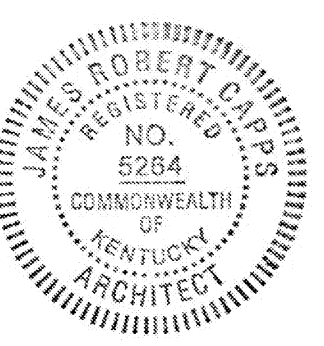
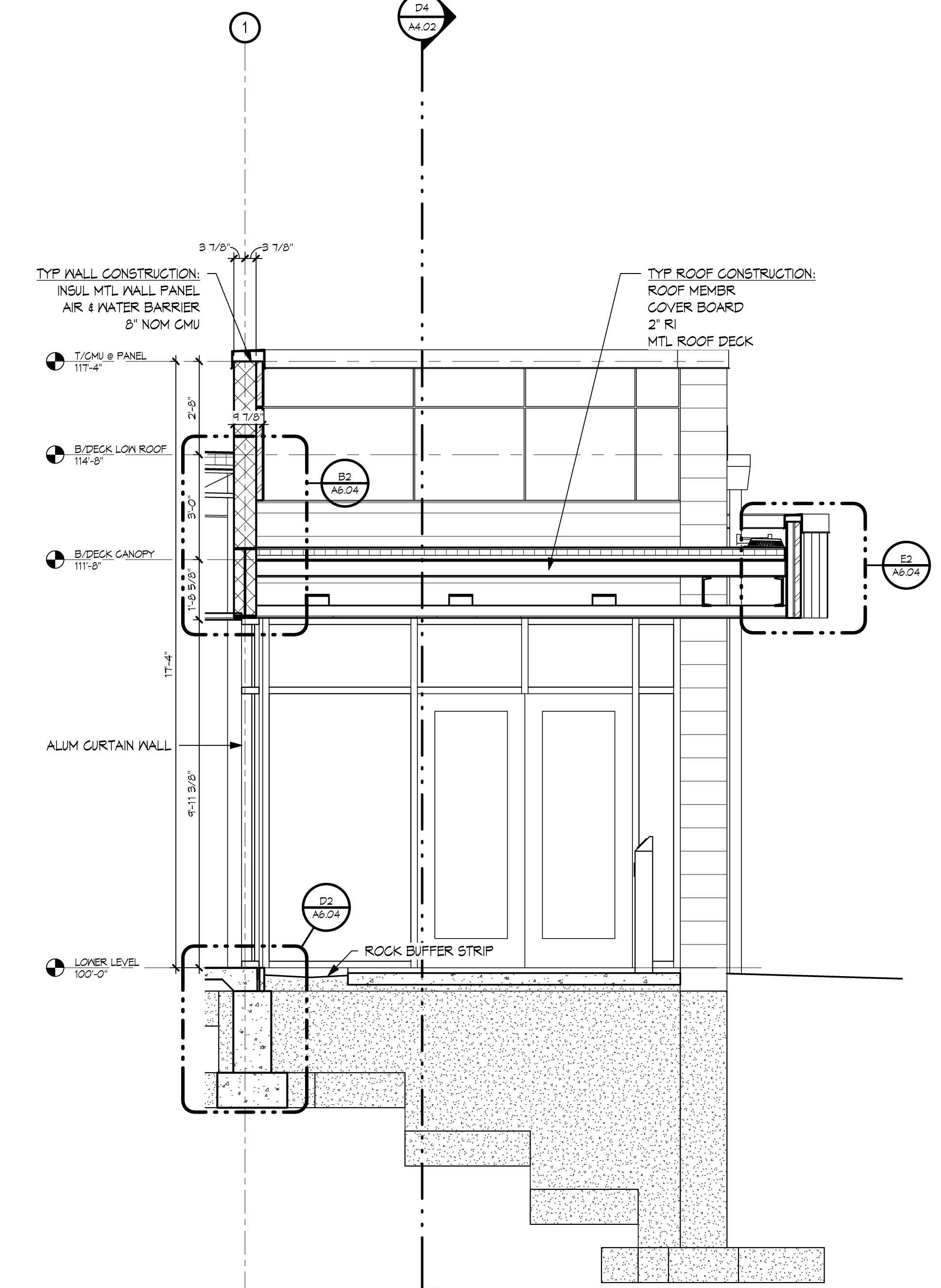
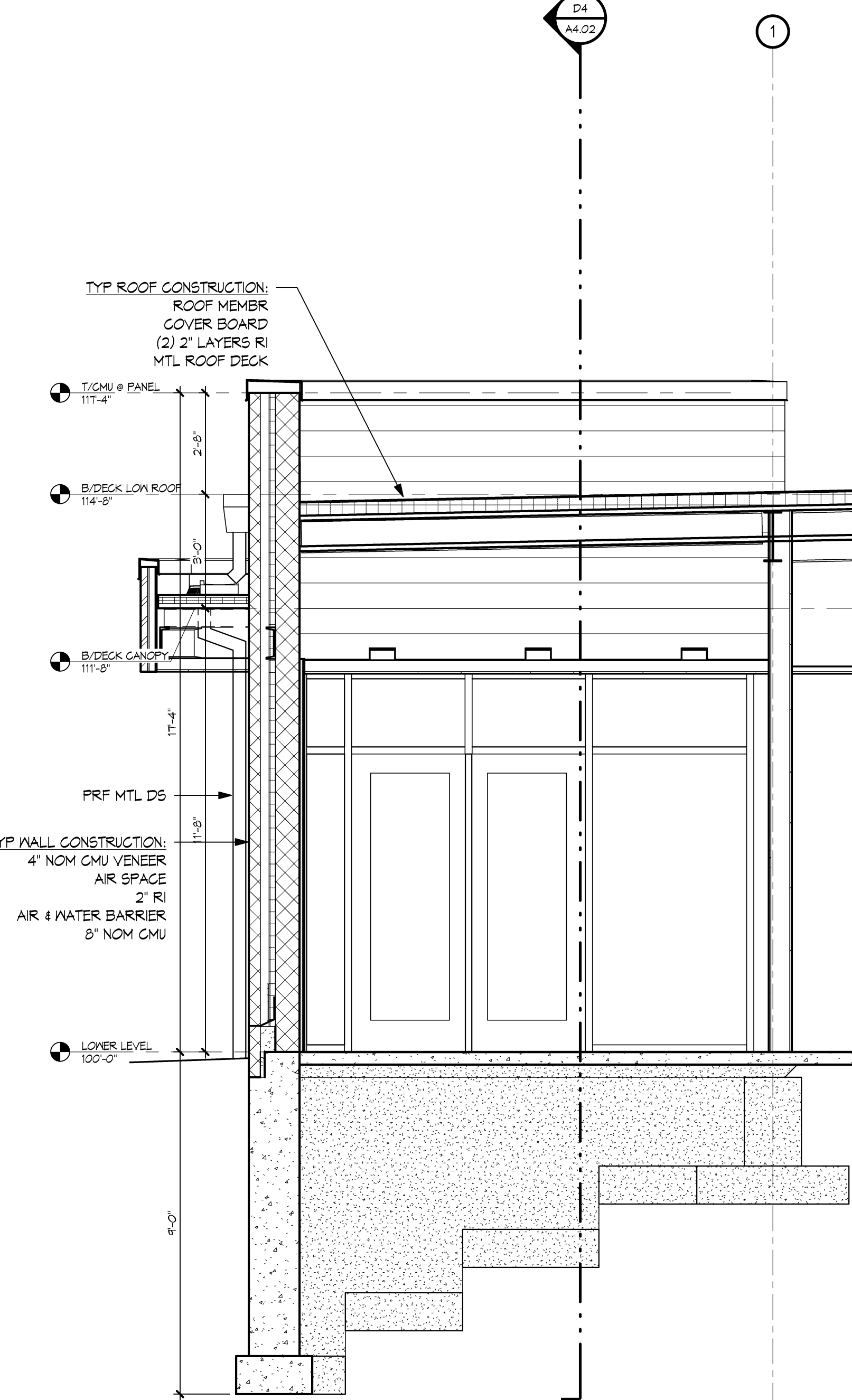
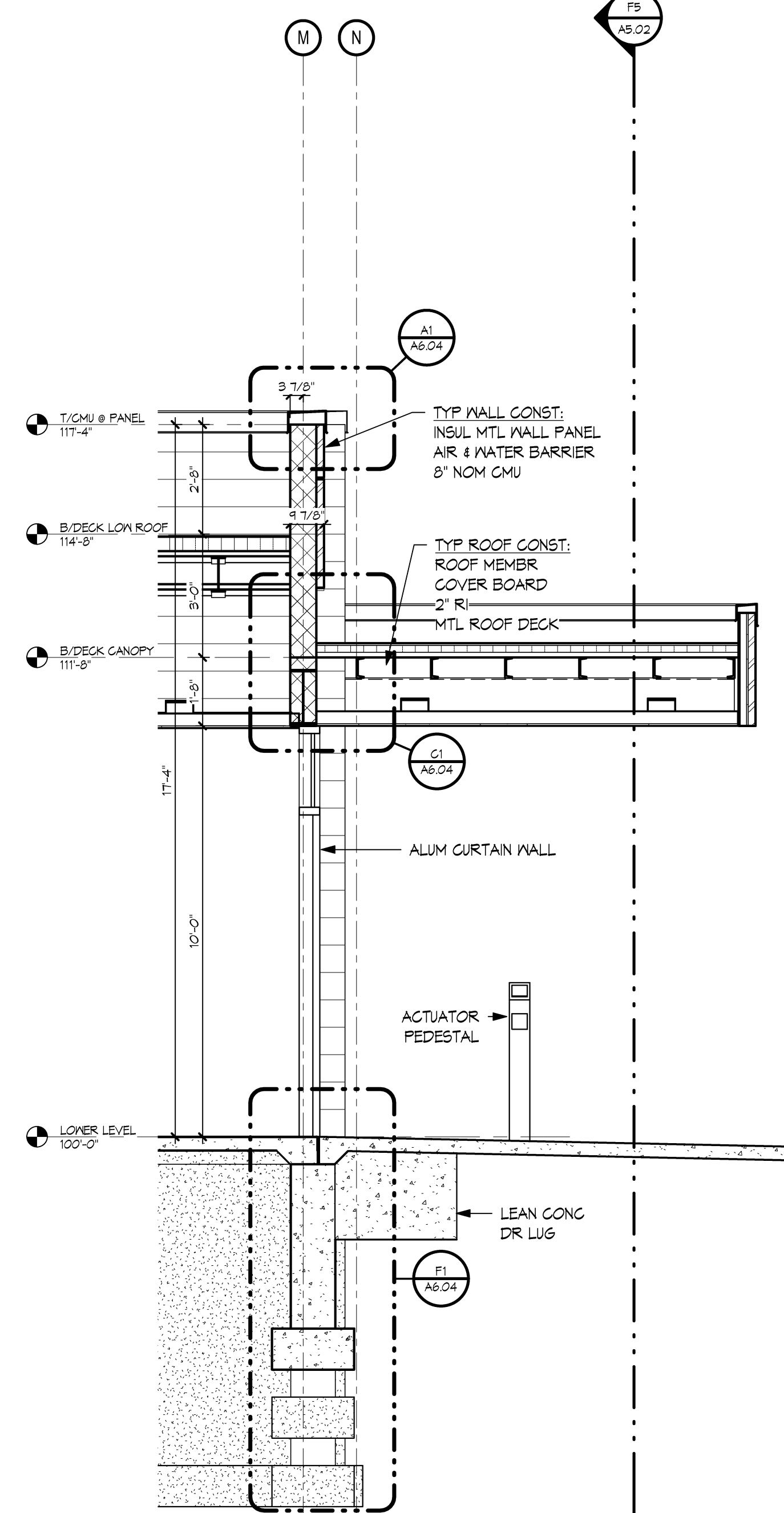
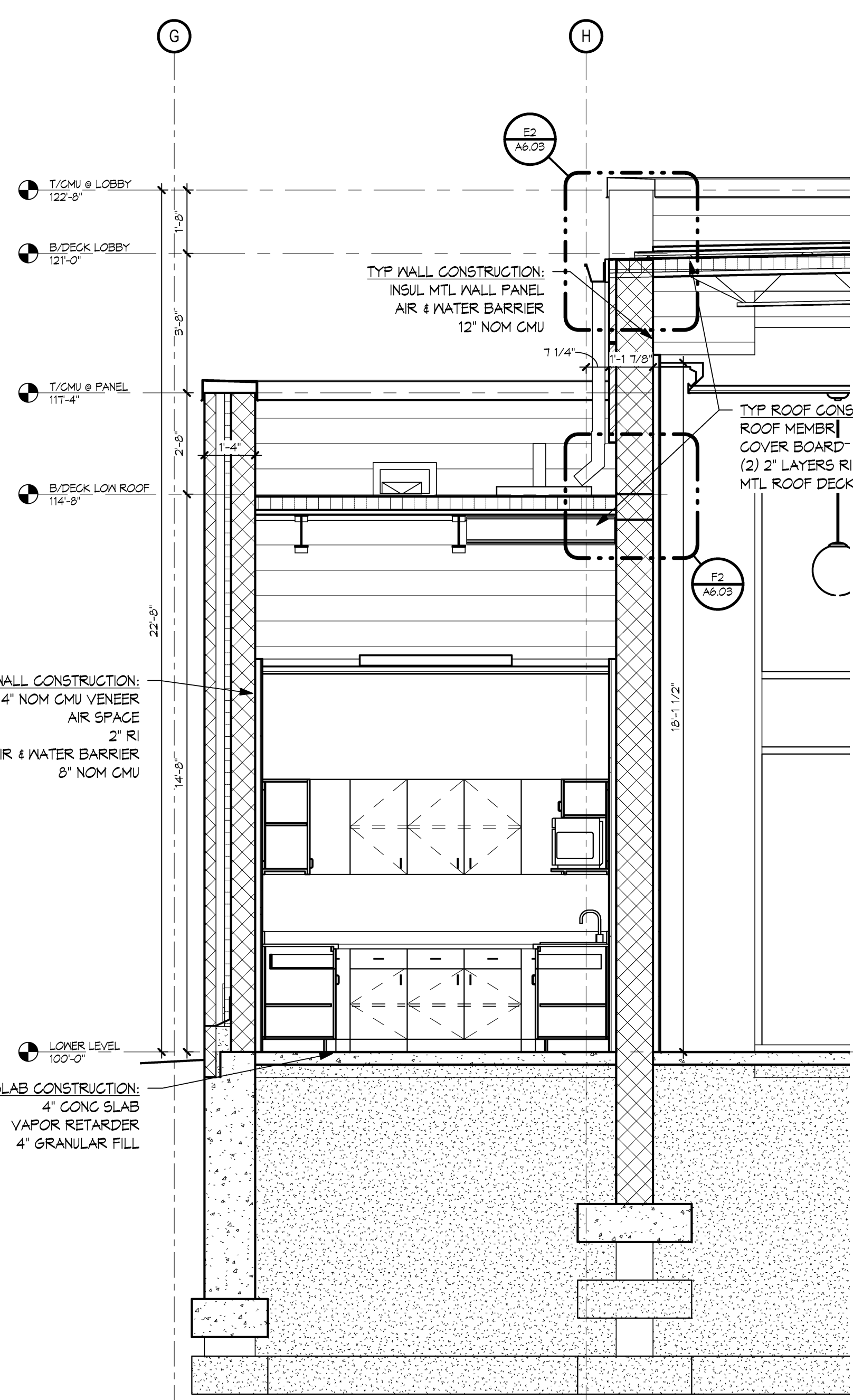
B

C

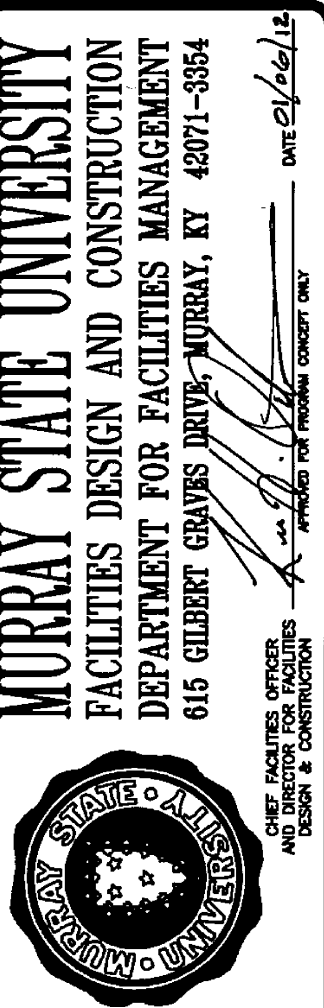
D

E

F



**Hastings+Chivetta**  
ARCHITECTURE • PLANNING • ENGINEERING  
627 Embury, Suite 500 | 3rd Floor, Louisville, KY 40202 | Tel: 502.583.3933 | www.hastingschivetta.com  
CIVIL, ARCHITECT, PLANNING, WORKMAN ENGINEERING & TESTING, INC., 1715 DUGGID DRIVE, MURRAY, KENTUCKY 40271  
STRUCTURAL ENGINEERING & TESTING, INC., 465 N. COURT ST., MARION, ILLINOIS 62959  
MPE-MARCUM ENGINEERING, LLC, 590 SOUTH 17TH STREET, PADUCAH, KENTUCKY, 40201



**MURRAY STATE UNIVERSITY**  
FACILITIES DESIGN AND CONSTRUCTION  
DEPARTMENT FOR FACILITIES MANAGEMENT  
616 GILBERT CAMPUS DRIVE, MURRAY, KY 40271-3854  
MURRAY STATE UNIVERSITY  
MURRAY, KENTUCKY

**MURRAY STATE UNIVERSITY**  
SPORTS PRACTICE FACILITY  
MURRAY, KENTUCKY  
MURRAY, KENTUCKY  
MURRAY, KENTUCKY  
MURRAY, KENTUCKY

REVISIONS

Date	2012-01-04
H+C Project No	2983.00
FDG Project No	10-007
BFW Project No	11194
Marcum Project No	11557
Sheet Name	WALL SECTIONS

**A5.02**

C:\Users\lshale\Documents\Projects\2983.00 SP-2012\_cohrent  
1/6/2012 3:57:14 PM