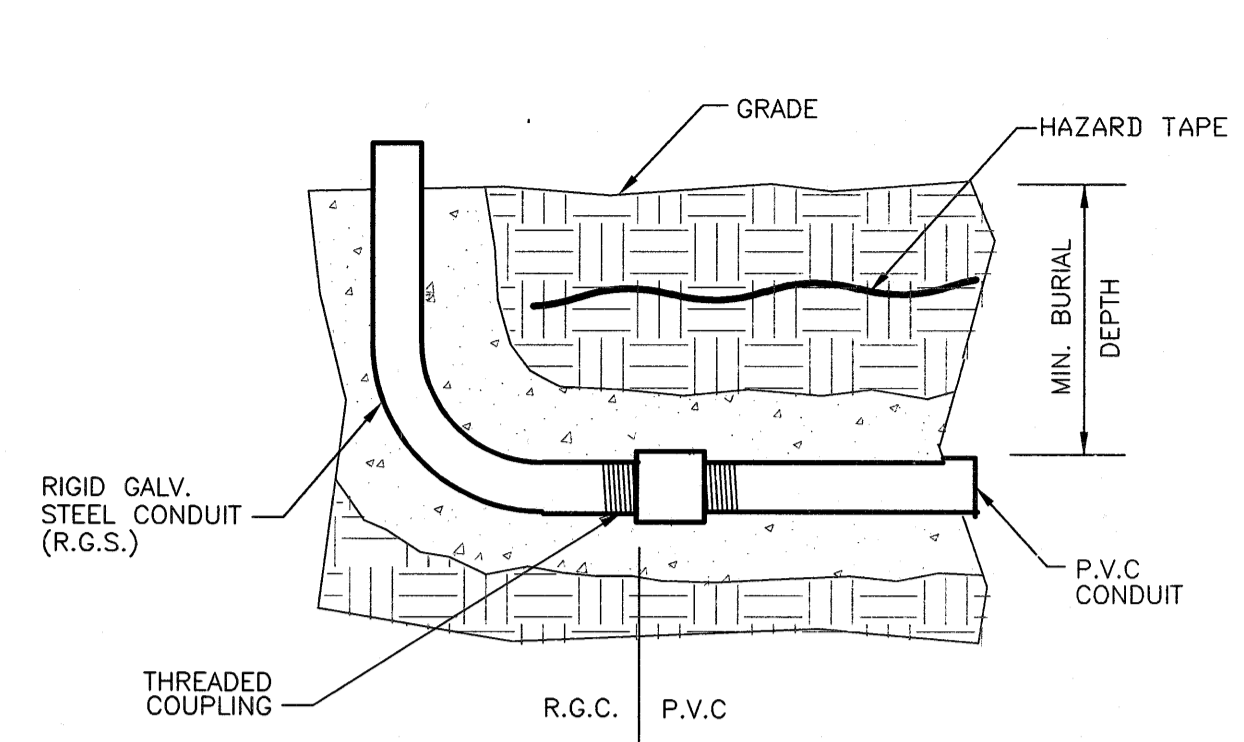
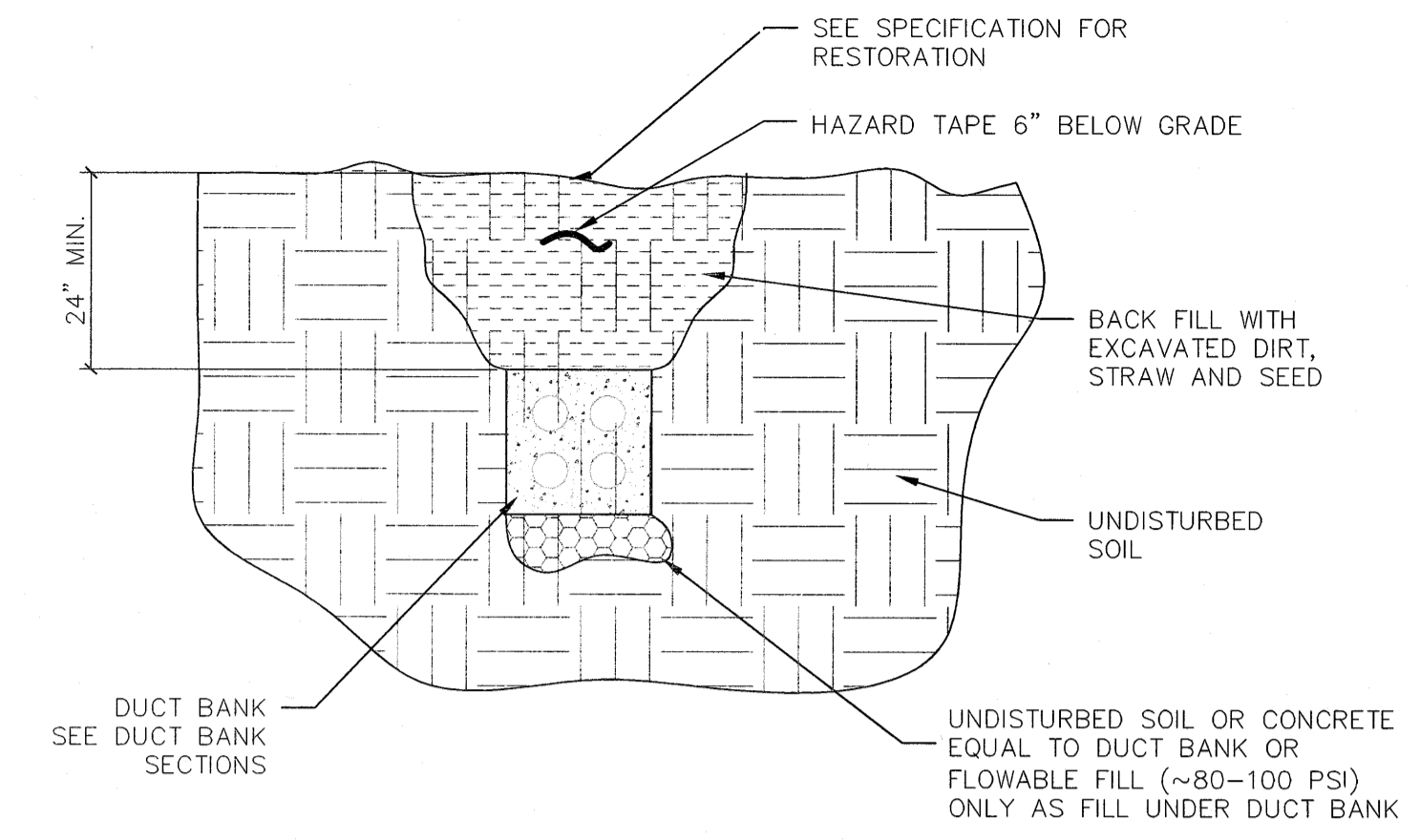


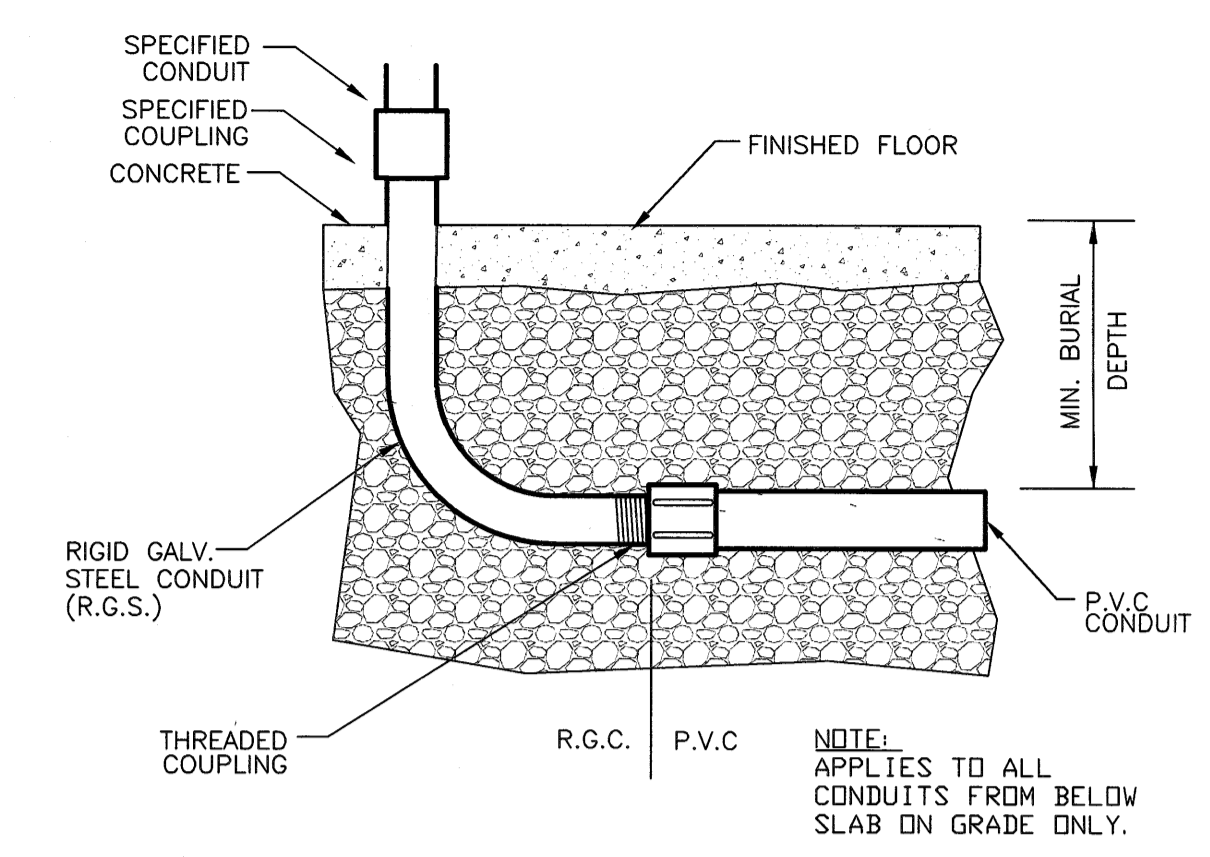
ELECTRICAL RISER DETAIL @ UTILITY POLE
NO SCALE



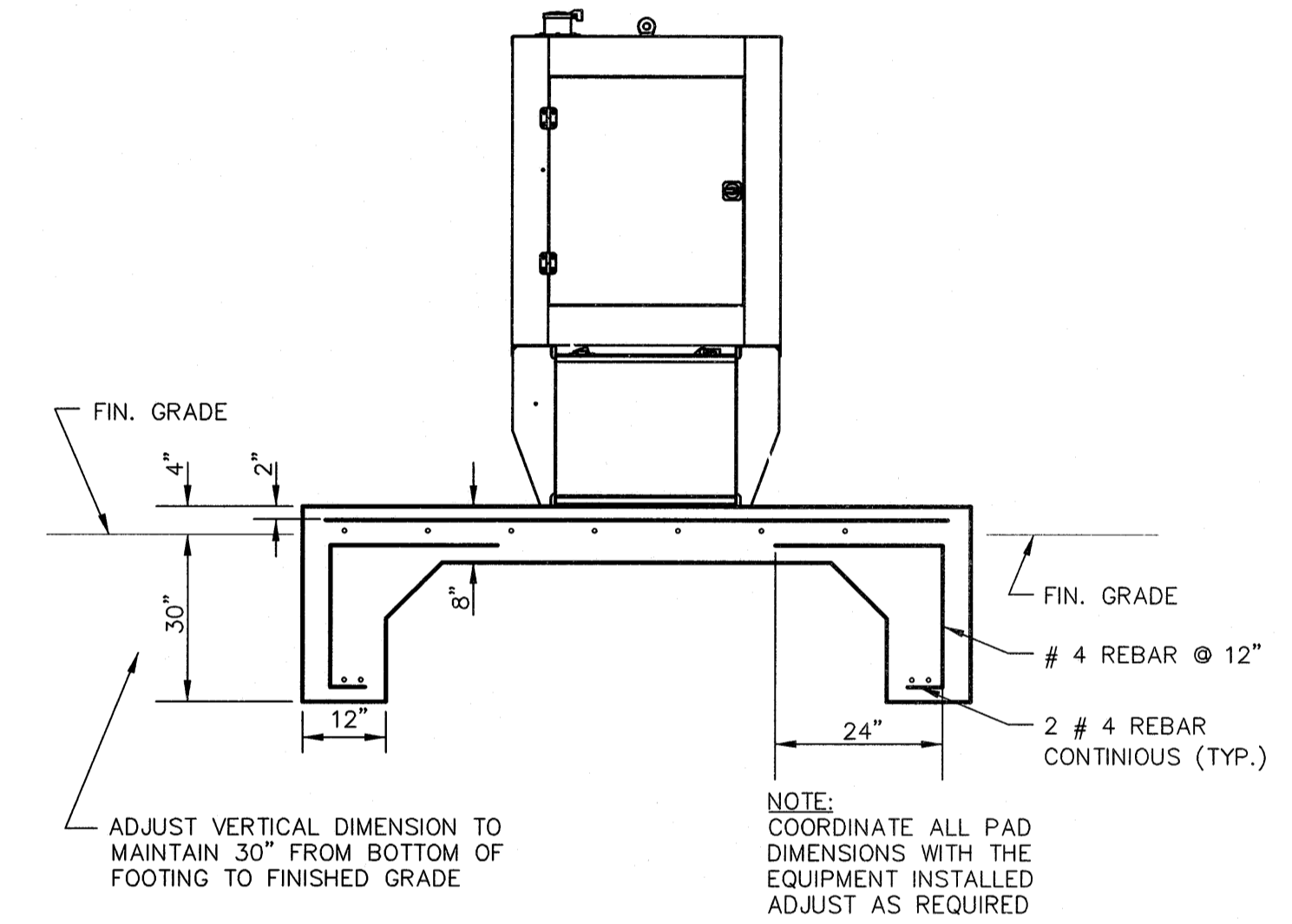
TYPICAL CONDUIT TRANSITION DETAIL
NO SCALE (APPLIES TO UNDERGROUND FEEDERS)



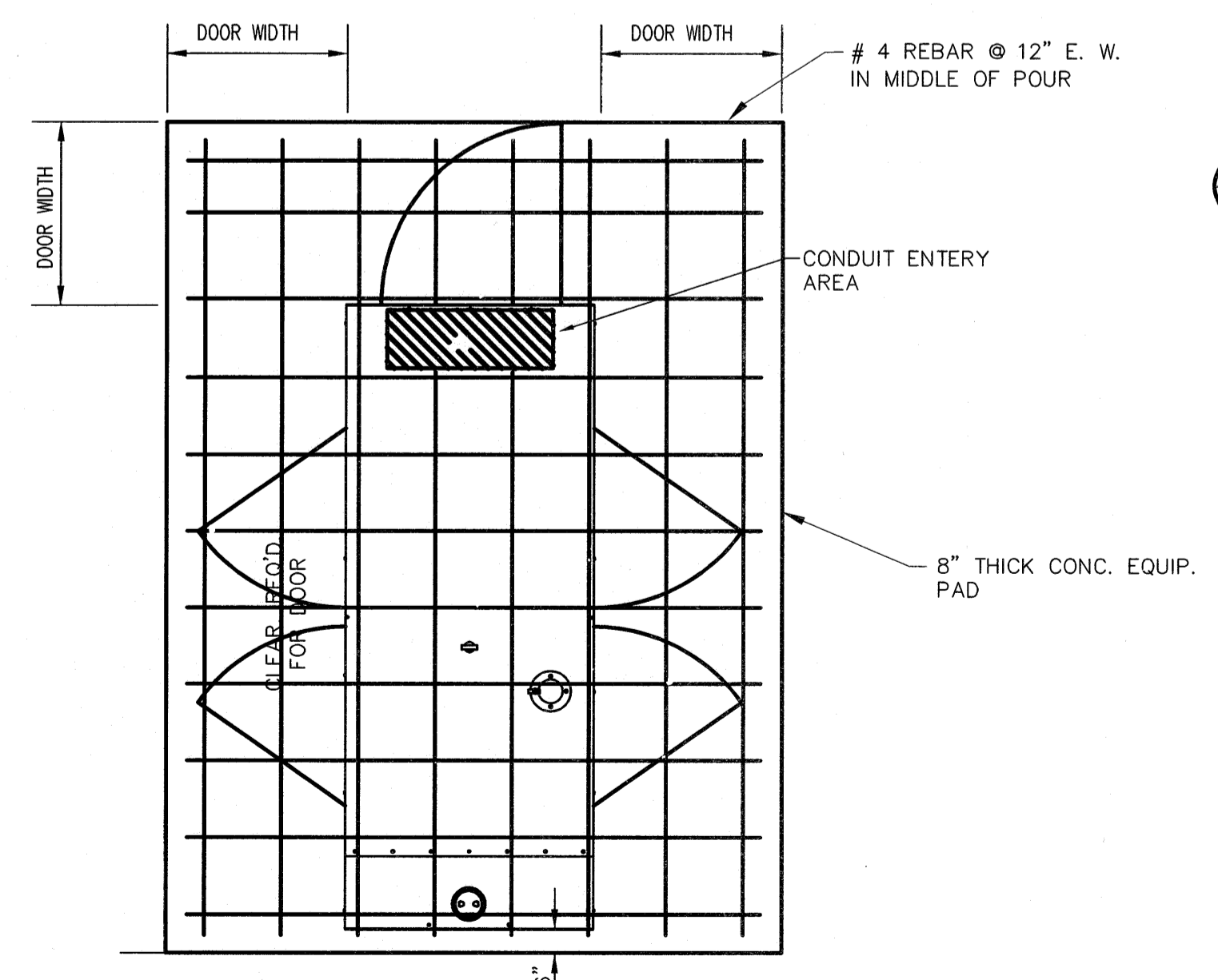
TRENCH SECTION DETAIL (GRASS OR SOD AREA)
NO SCALE



TYPICAL CONDUIT TRANSITION DETAIL
NO SCALE (APPLIES TO UNDERSLAB FEEDERS)



GENSET PAD ELEV. DETAIL
NO SCALE



GENSET PAD PLAN DETAIL
NO SCALE

CONSTRUCTION NOTES:

THE GENSET, REMOTE ANNUNCIATOR AND TRANSFER SWITCH WILL BE PURCHASED BY THE CONTRACTOR AND DELIVERED TO THE SITE. THE E.C. SHALL UNLOAD ALL EQUIPMENT ASSEMBLY AND INSTALL IN PLACE.

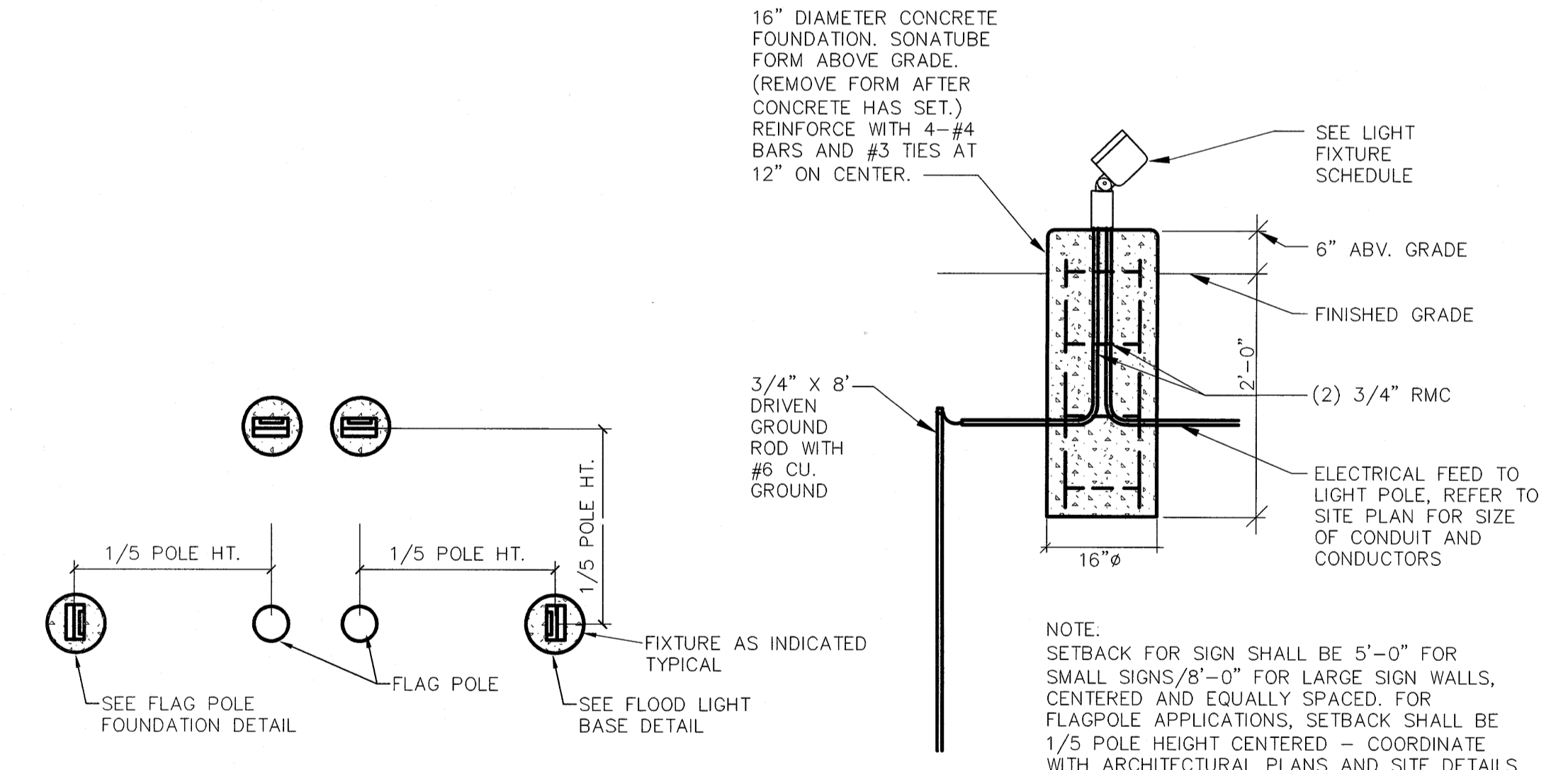
E.C. IS RESPONSIBLE FOR ALL COORDINATION, MATERIALS AND LABOR FOR THE INSTALLATION, TESTING AND PLACING INTO SERVICE THE FURNISHED EQUIPMENT.

FURNISH AND INSTALL IN PANEL "B1" A 1P20A BREAKER TO FEED THE GENSET BATTERY CHARGER/BLOCK HEATER, EXTEND 3-#10'S IN 3/4" C. UNDERGROUND TO THE GENSET CONTROL PANEL AND CONNECT.

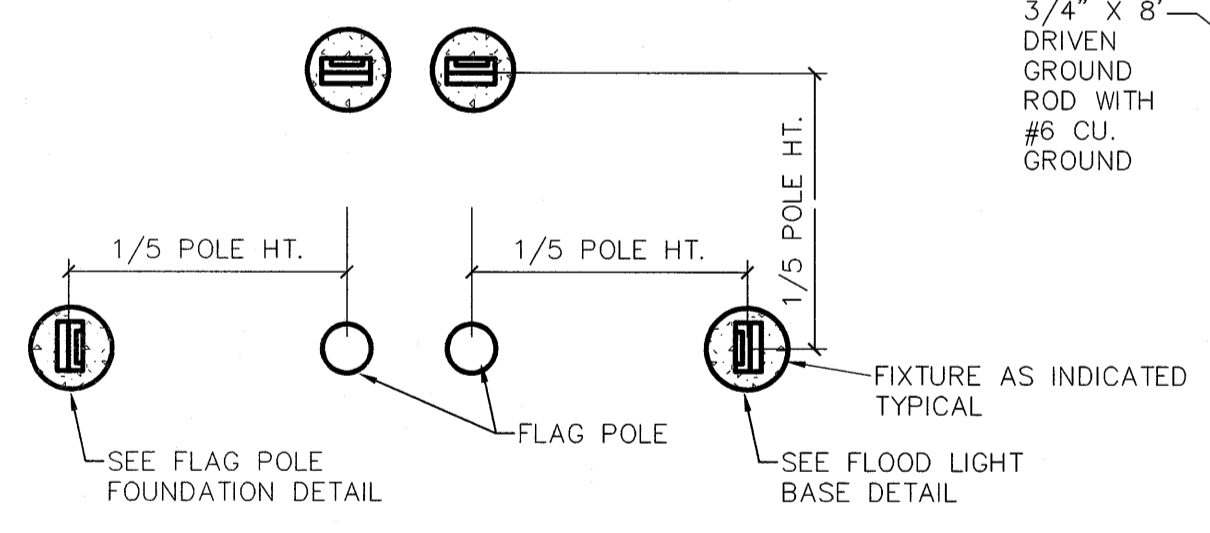
FURNISH AND INSTALL FROM THE GENSET CONTROL PANEL 6-#14 THHN STR. IN 3/4" C AND CONNECT THE A.T.S.

FURNISH AND INSTALL FROM THE GENSET CONTROL PANEL 4-#14 THHN STR. IN 3/4" C AND A SHIELDED #16 TWISTED PAIR CABLE PER GENSET MANUFACTURER, TO THE REMOTE ANNUNCIATOR PANEL INSIDE THE BUILDING AT THE OWNERS DESIGNATED LOCATION.

PROVIDE PLAQUE ON THE A.T.S. TO INDICATE SERVICE DISCONNECT.



FLOOD LIGHT BASE DETAIL
NO SCALE



-FLAG POLE LIGHTING PLAN VIEW-

MARCUM ENGINEERING, LLC
500 SOUTH 17th STREET - PADUCAH, KENTUCKY 42002-0120
PHONE - 270.444.9274 FAX - 270.443.1904

castleberry megregor swinford ARCHITECTS

ELECTRICAL SITE UTILITY DETAILS

U-2
of 2

DATE 10/01/10

BENTON GAS SYSTEM Project No. 10560