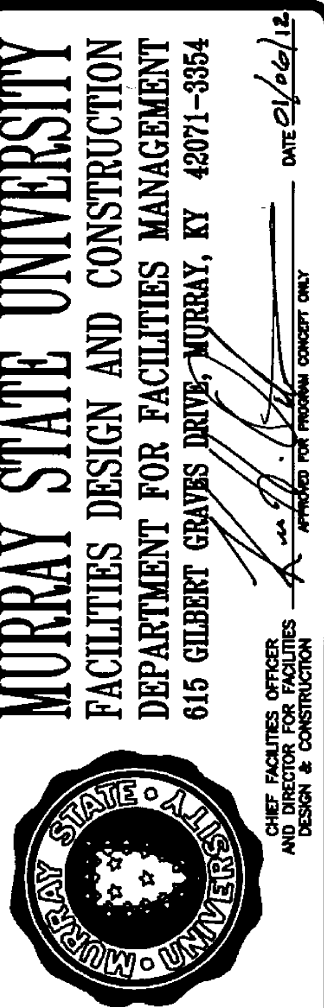


**Hastings+Chivetta**  
ARCHITECTURE • PLANNING • ENGINEERING

6275 Embury, Suite 500 | Denver, Colorado 80231 | Tel: 303.863.5717 | Fax: 303.863.5933 | www.hastingschivetta.com  
CIVIL, ARCHITECT, PLANNING, WORKMAN ENGINEERING & TESTING, INC., 1715 DILLIGOLD DRIVE, MURRAY, KENTUCKY 40371  
STRUCTURAL ENGINEERING & TESTING, INC., 465 N. COURT ST., MARION, ILLINOIS 62959  
MPE-MARCUM ENGINEERING, LLC, 500 SOUTH 17TH STREET, PADUCAH, KENTUCKY, 40302



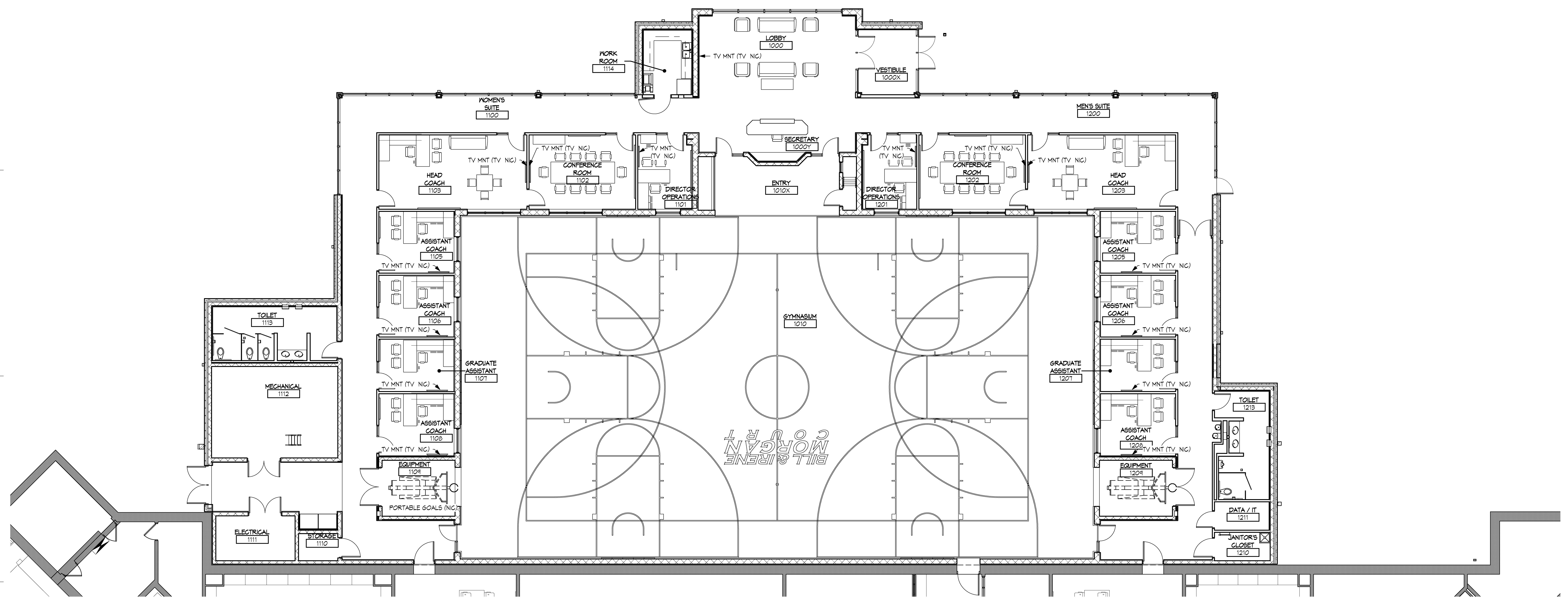
**MURRAY STATE UNIVERSITY**  
FACILITIES DESIGN AND CONSTRUCTION  
DEPARTMENT FOR FACILITIES MANAGEMENT  
616 GILBERT DRIVE, MURRAY, KY 40371-3854  
MURRAY STATE UNIVERSITY  
SPORTS PRACTICE FACILITY  
MURRAY STATE UNIVERSITY  
MURRAY, KENTUCKY  
BID SET - 2012-01-04



REVISIONS	
Date	2012-01-04
H+C Project No	2983.00
FDC Project No	10-007
BFW Project No	11194
Marcum Project No	11557
Sheet Name	FURNITURE PLANS

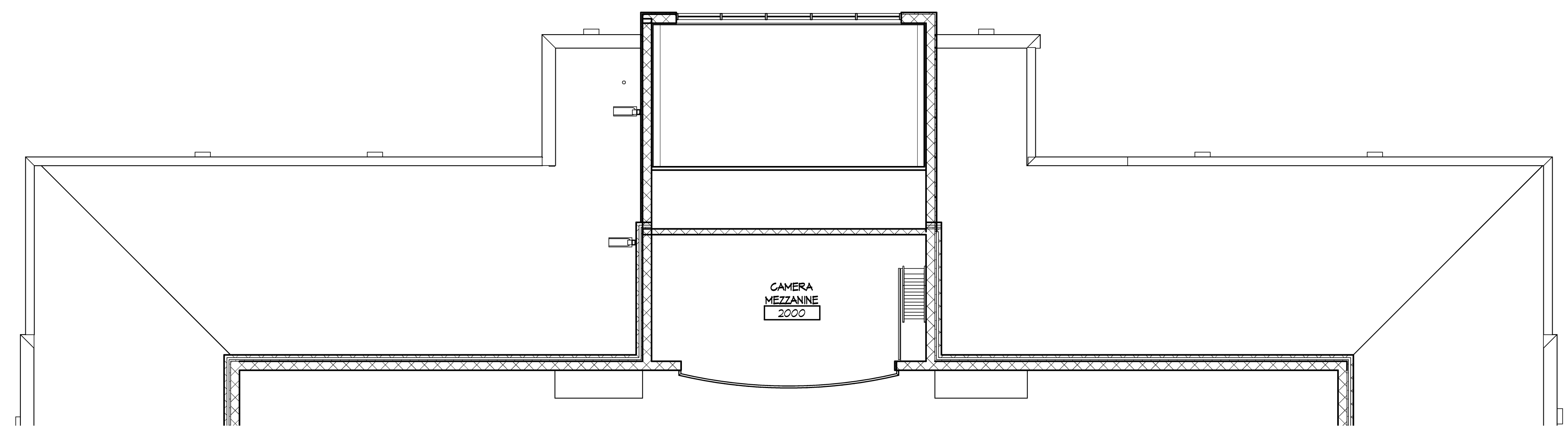
**A9.01**

A  
B  
C



**LOWER LEVEL FURNITURE PLAN**  
SCALE | 1/8" = 1'-0"

D



**CAMERA MEZZANINE FURNITURE PLAN**  
SCALE | 1/8" = 1'-0"

E  
F

C:\Users\lshale\Documents\Projects\2983.00 SP-2012\_cshale.rvt  
1/6/2012 3:57:55 PM