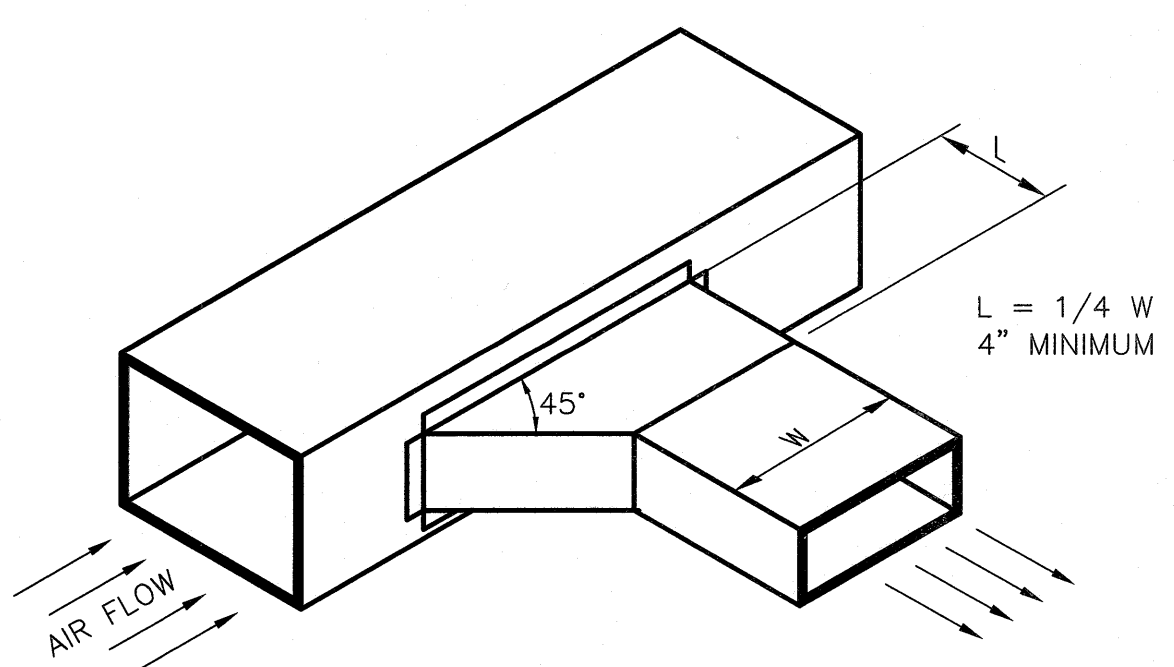
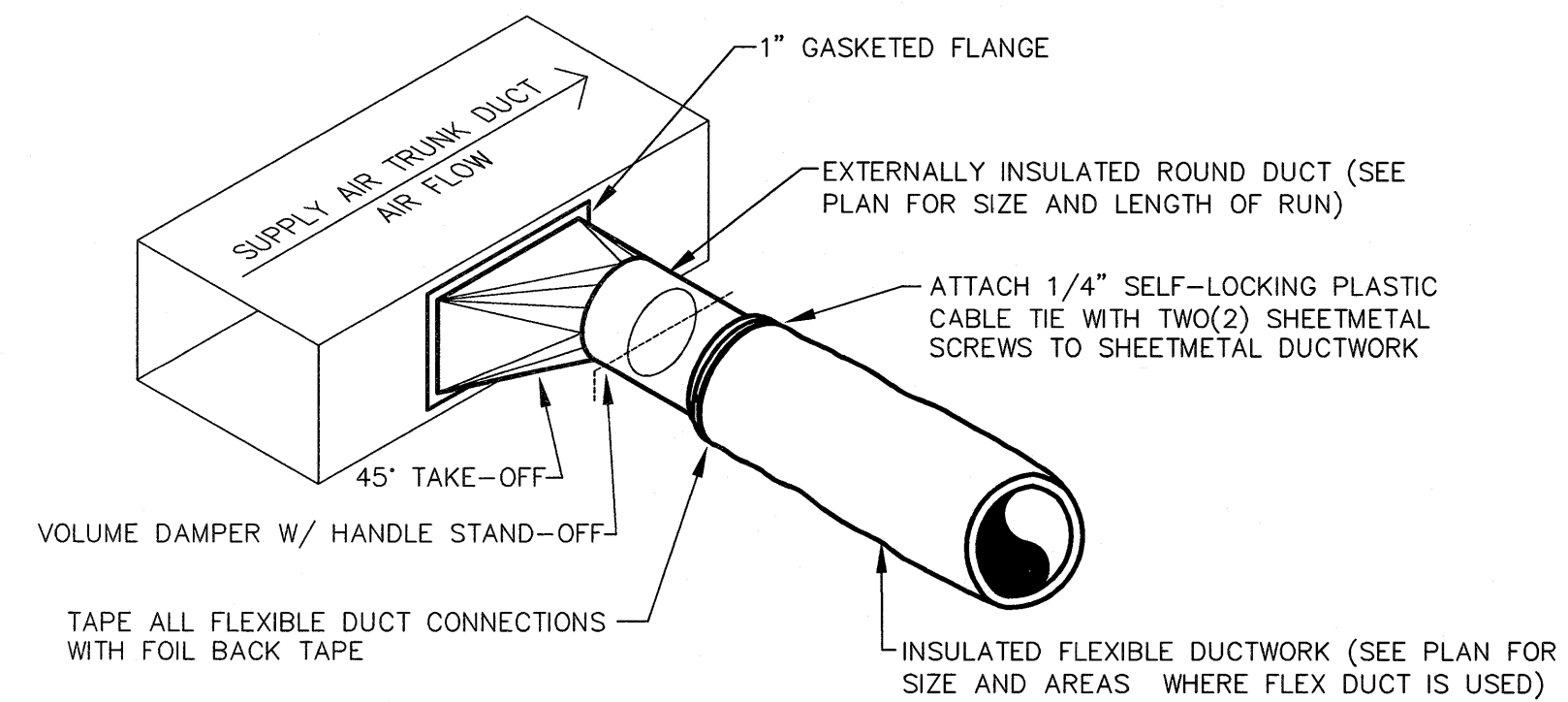


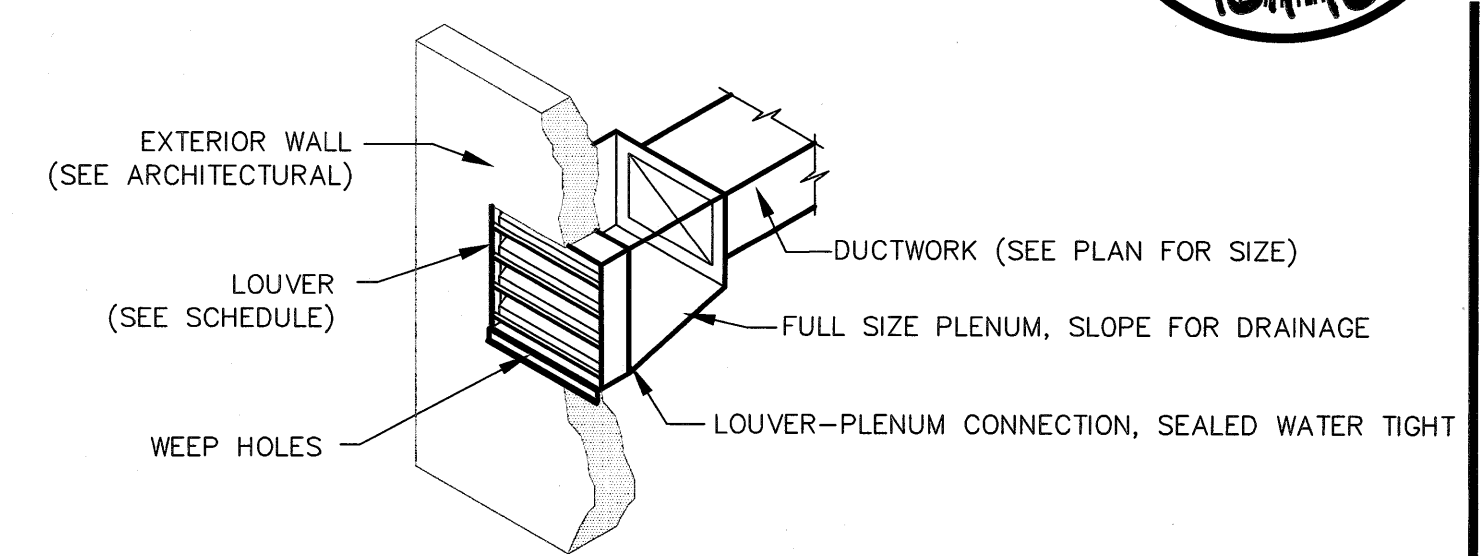
RETURN-AIR GRILLE PLENUM DETAIL
NO SCALE



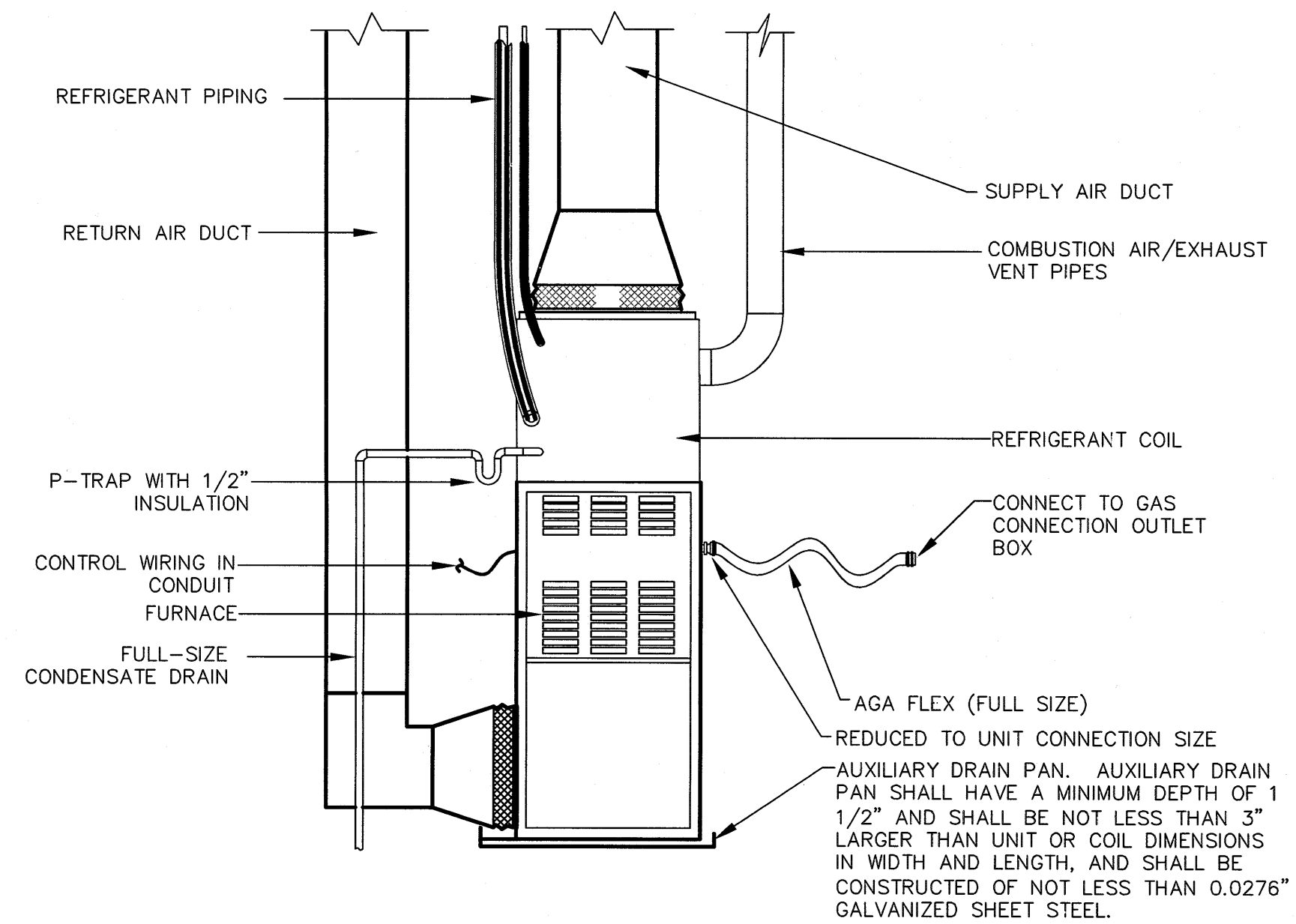
DUCT TAKEOFF DETAIL
NO SCALE



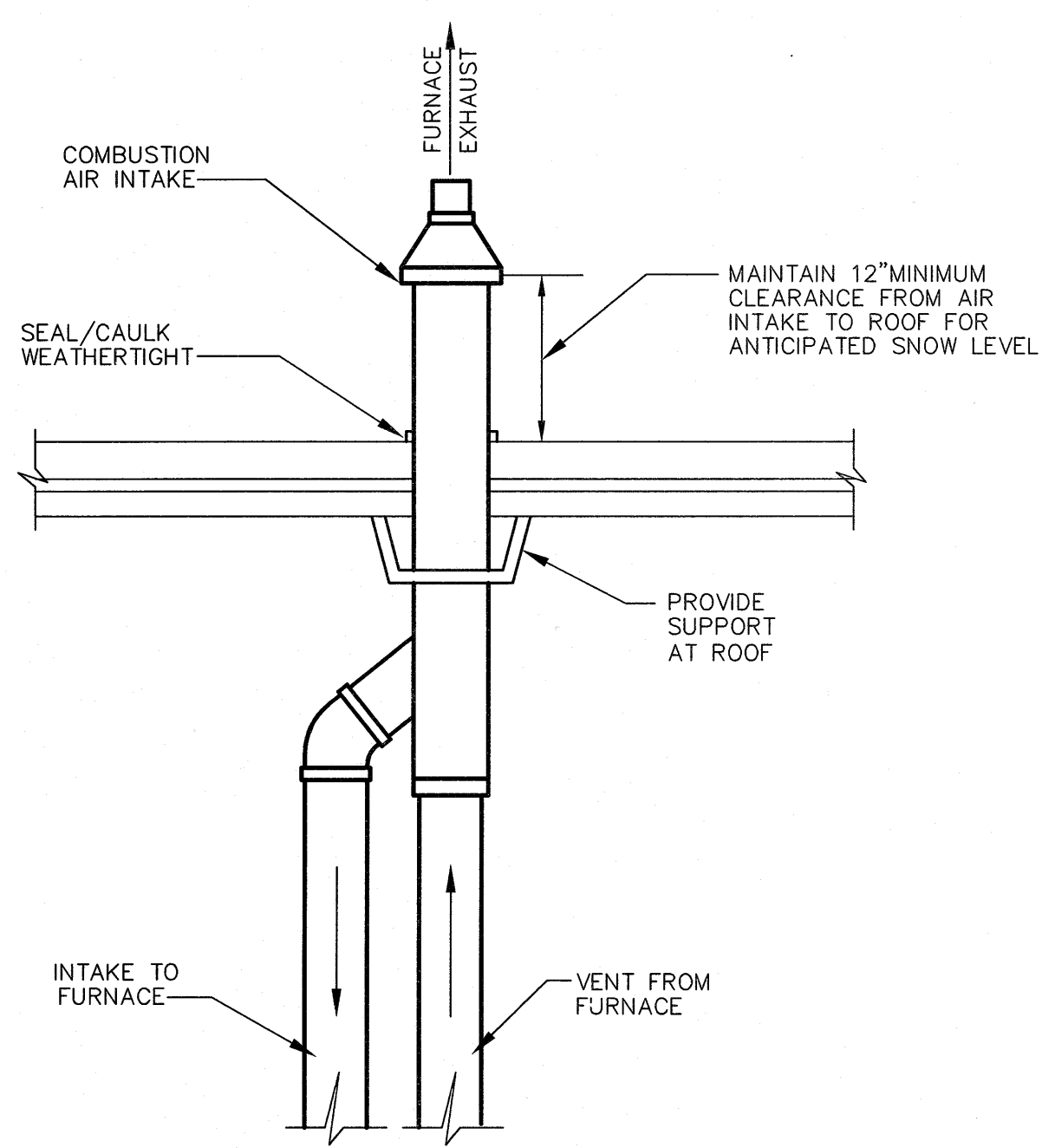
DUCT TAKE-OFF/FLEX CONNECTION
NO SCALE



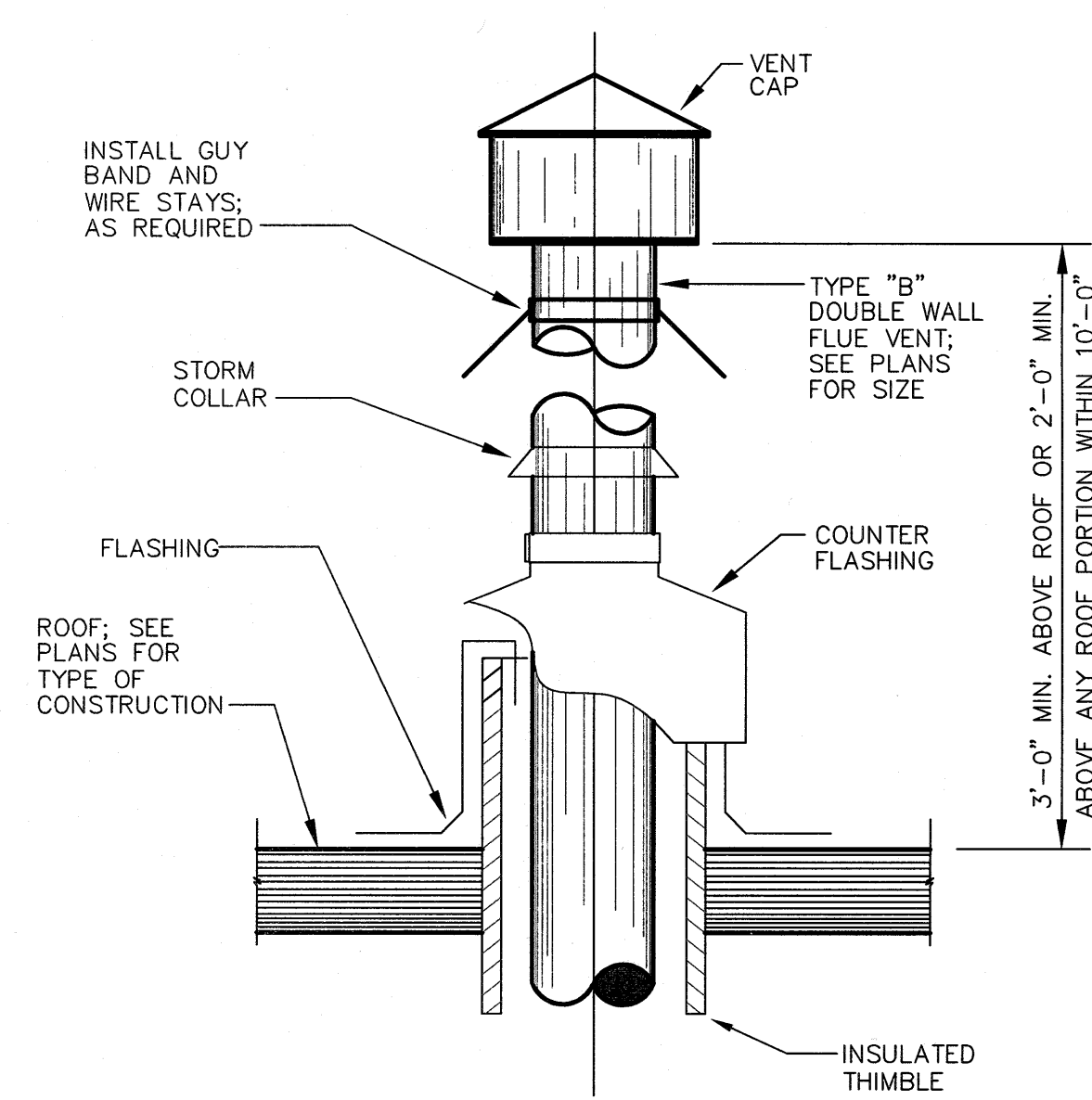
LOUVER INSTALLATION DETAIL
NO SCALE



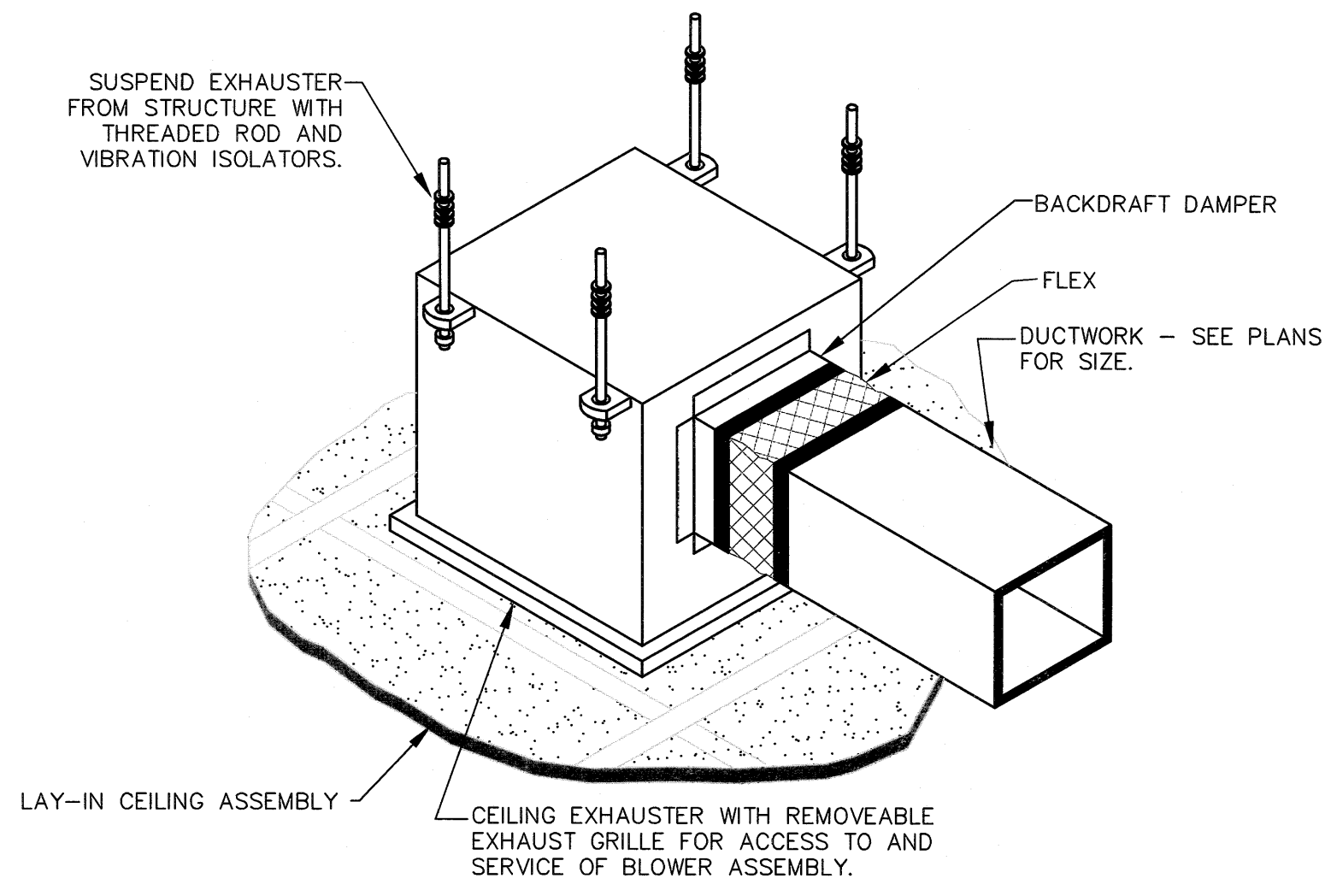
FURNACE INSTALLATION DETAIL
NO SCALE



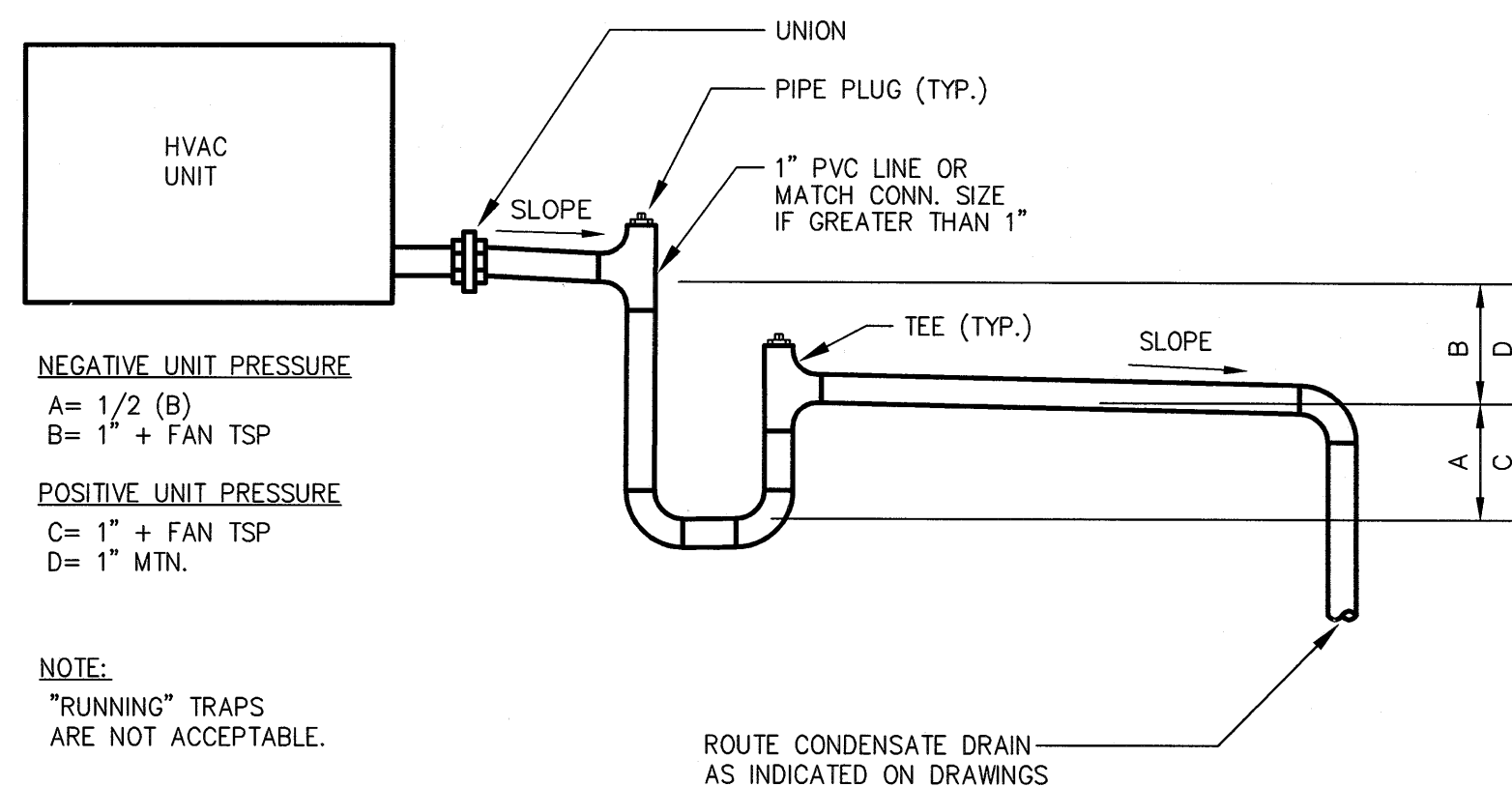
FURNACE FLUE VENT/COMBUSTION AIR TERMINATION ASSEMBLY DETAIL
NO SCALE



FLUE VENT DETAIL
NO SCALE

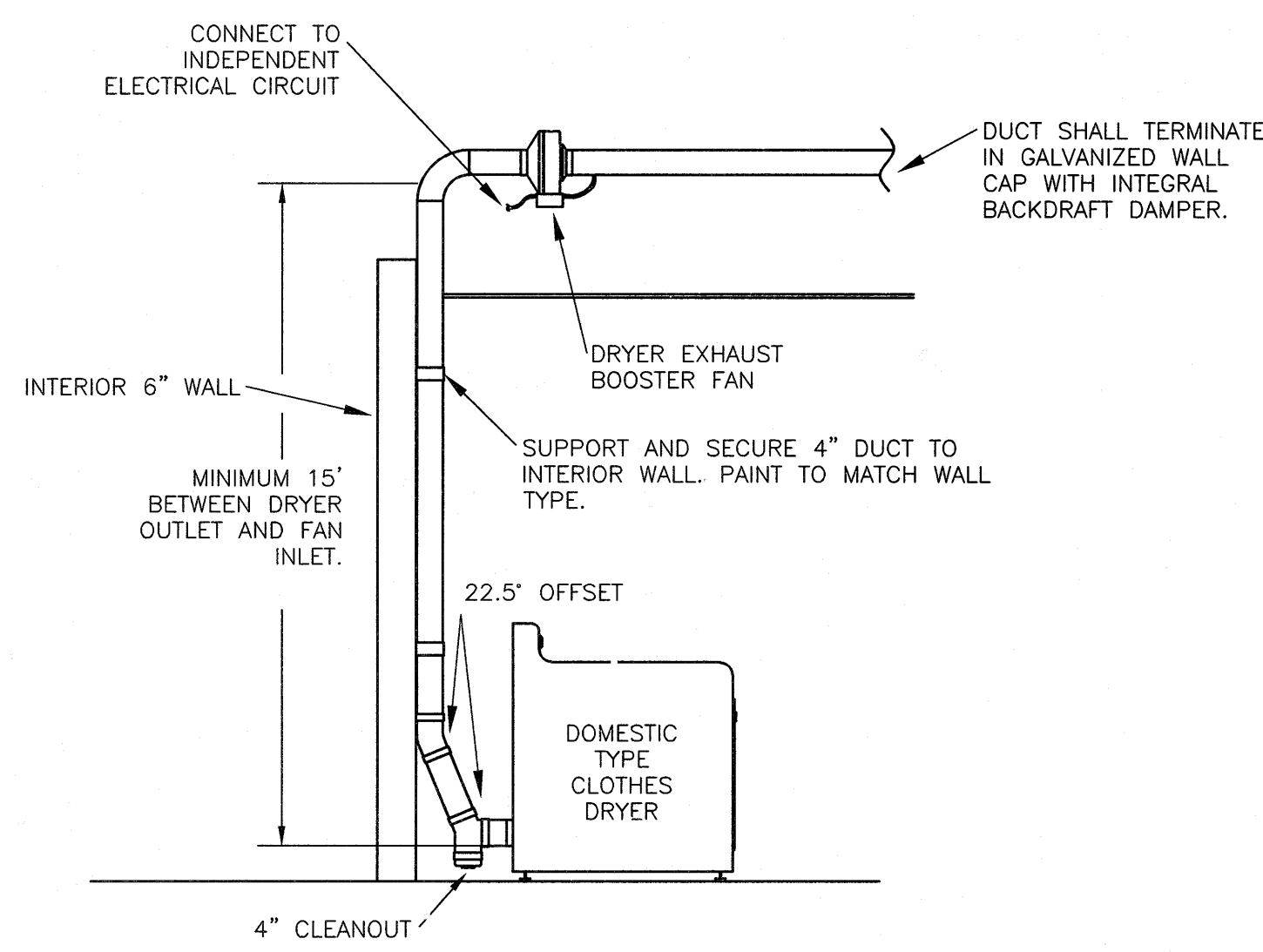


CEILING MOUNTED EXHAUST FAN DETAIL
NO SCALE



CONDENSATE DRAIN TRAP DETAIL
NO SCALE

- NOTES:**
1. DRYER EXHAUST BOOSTER FAN SHALL BE INSTALLED ABOVE CEILING SUCH THAT FAN MAY BE SERVICED FROM LADDER. BOOSTER FAN SHALL BE SIMILAR TO FANTECH DBF4XL1. FAN SHALL INCLUDE A POSITIVE PRESSURE SENSING SWITCH THAT WILL RECOGNIZE THE DRYER FAN OPERATION AND ACTIVATE BOOSTER FAN FROM AN INDEPENDENT ELECTRICAL CIRCUIT.
 2. INSTALL TUBING FROM POSITIVE PRESSURE SWITCH INTO FAN INLET SIDE OF EXHAUST DUCT. DO NOT INSTALL TUBING IN SUCH A MANNER AS TO ALLOW CONDENSATE FROM DUCTWORK TO COLLECT IN TUBING.
 3. FAN SHALL BE MOUNTED ACCORDING TO MANUFACTURER'S SPECIFICATIONS TO ENSURE CORRECT OPERATION OF FAN AND PRESSURE SWITCH.
 4. EXHAUST DUCT SHALL BE CONSTRUCTED OF GALVANIZED SHEET METAL WITH SMOOTH INTERIOR FINISH. SCREWS OR OTHER FASTENERS SHALL NOT BE USED TO CONNECT DUCTWORK.



DRYER EXHAUST BOOSTER FAN INSTALLATION DETAIL
NO SCALE

MARCUM ENGINEERING, LLC
500 SOUTH 17th STREET - PADUCAH, KENTUCKY 42002-0120
PHONE - 270.444.9274 FAX - 270.443.1904
COPYRIGHT © 2010 - MARCUM ENGINEERING, LLC

castleberry megregor swinford ARCHITECTS
HVAC DETAILS
BENTON GAS SYSTEM
Project No. 10560
H-5 of 6
DATE 10/01/10