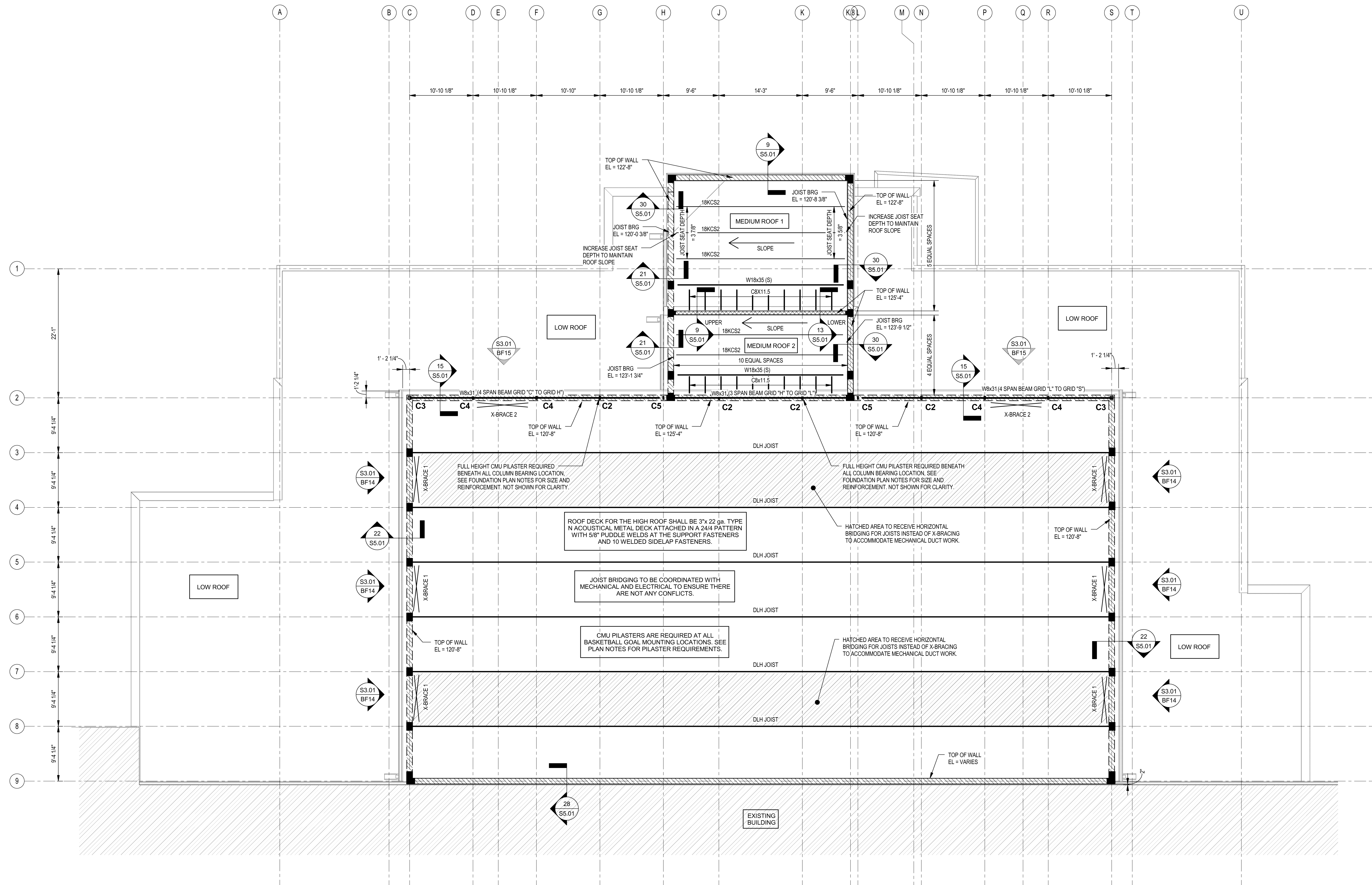
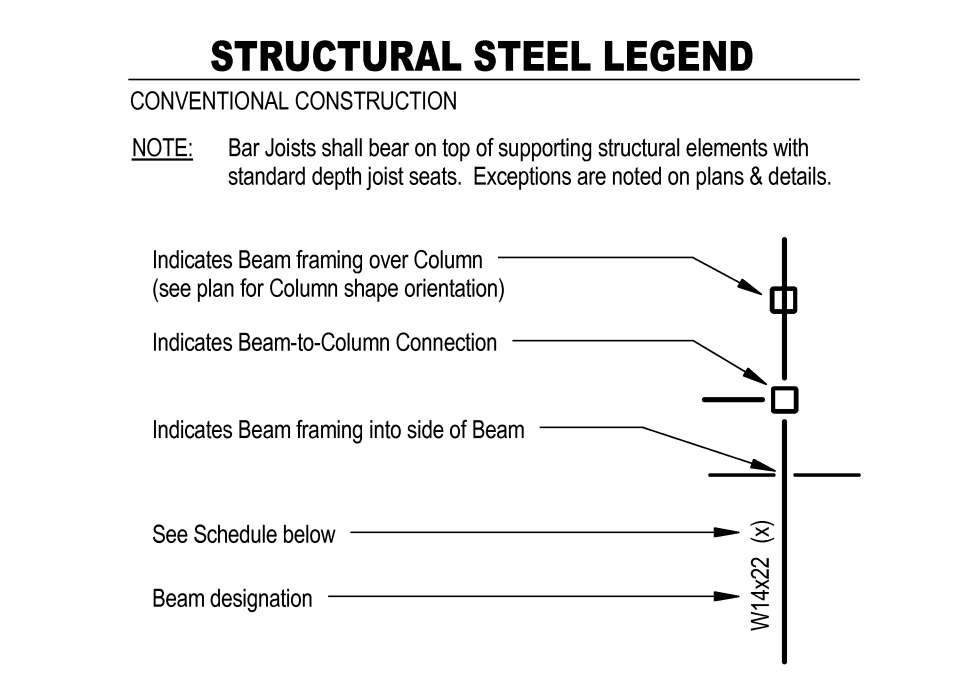


DLH JOIST
1/4" = 1'-0"

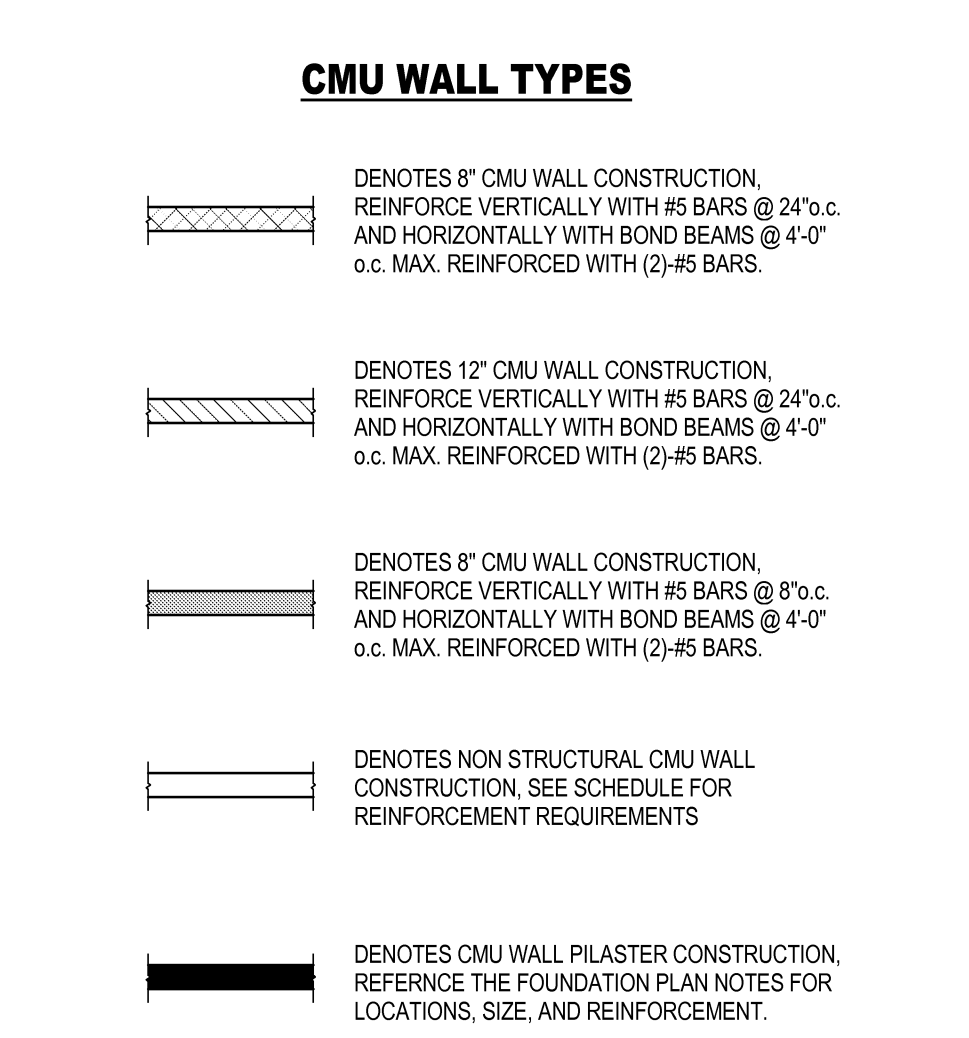


- PLAN NOTES - ROOF FRAMING**
1. Roof construction for the medium roofs shall be 1 1/2"x20 ga., type B, galvanized metal deck over steel joists. Fasten deck to supporting steel with 5/8" puddle welds @ the support fasteners and #10 TEK screws at the sidelap fasteners in a 3/67 pattern. Install 5 side lap fasteners per span.
 2. All k-series joists shall have a standard bearing seat depth of a net uplift of 15 psf.
 3. All roof joists bridging and their connections shall be prohibited without prior approval from the engineer.
 4. Splicing of structural steel members in the shop or field is prohibited without prior approval from the engineer.
 5. Sequence welding to minimize weld shrinkage stresses and base material warping.
 6. Burning of holes or enlarging of holes by burning structural steel is not allowed.
 7. The fabricator shall be responsible for all errors of detailing on the shop drawings, errors in fabrication, and for the correct fitting of structural steel members.
 8. See the loose lintel schedule for all openings in non-load bearing masonry. The general contractor shall coordinate all openings in the masonry with the steel fabricator.
 9. Vertical flush wall pilasters shall be constructed full height in all CMU walls adjacent to all wall openings, wall intersections including corner and tee intersections, at beam bearing, lintel bearing, basketball goal mounting locations, DLH roof joist bearing locations and column bearing locations. Pilasters are required at these locations even if they are not indicated on the plan sheets. Pilasters shall be 1'-4" in length and reinforced with (2)-#5 bars in each cell unless noted otherwise.

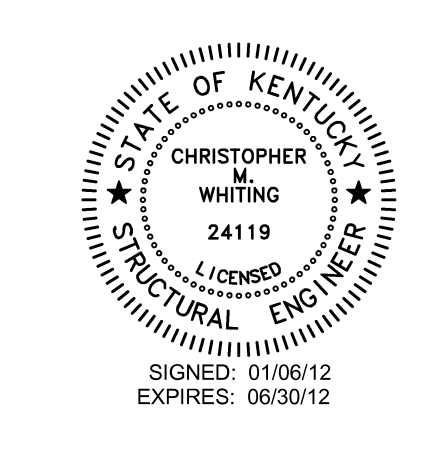


(X) DESIGNATION

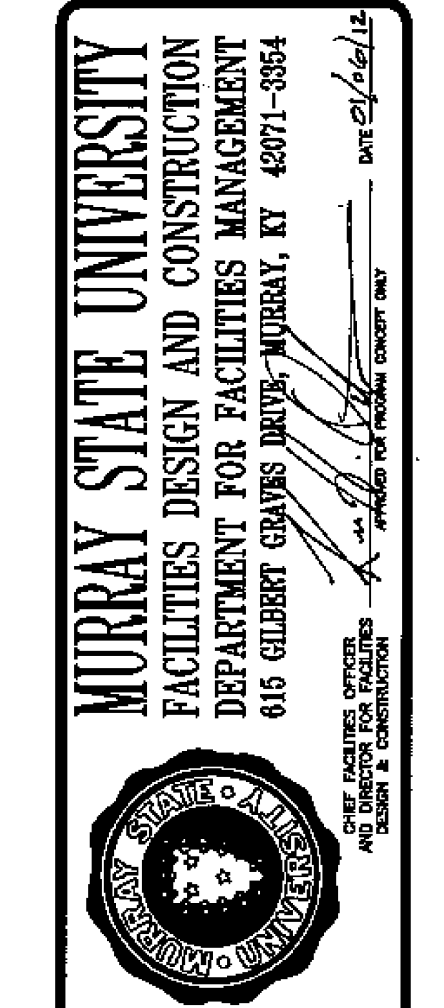
(X-X')	Top of Steel elevation
blank	None - Top of Steel elevation to be determined by floor construction.
(S)	Sloped Beam
(BB)	Bent Beam (see detail as indicated on plan)
(C)	Can'tilever Beam
(WH)	Web Horizontal
(R)	Radiused Beam



HIGH ROOF FRAMING PLAN
1/8" = 1'-0"



Hastings+Chivetta
ARCHITECTURE • PLANNING • ENGINEERING
622 Emerson, Suite 200 | Street Level, Madison, KY 40311 | Tel: 502.483.3717 | Fax: 502.483.2823 | www.hastingschivetta.com
C/O: BACON FARMER WORKMAN ENGINEERING & TESTING, INC. | 101 DONALD DRIVE, MURRAY, KENTUCKY 40371
STRUCTURAL: BACON FARMER WORKMAN ENGINEERING & TESTING, INC. | 401 N. COURT ST., MARION, ILLINOIS 62959
MEP: MARCUM ENGINEERING, LLC | 500 SOUTH 17TH STREET, PADUCAH, KY 40302



MURRAY STATE UNIVERSITY
SPORTS PRACTICE FACILITY
MURRAY STATE UNIVERSITY
MURRAY, KENTUCKY
BID SET - 2012-01-10



REVISIONS

Date	1-10-2012
H+C Project No	11194
FDC Project No	10-007
BFW Project No	11194
Marcum Project No	11557
Sheet Name	HIGH ROOF FRAMING PLAN



S2.03