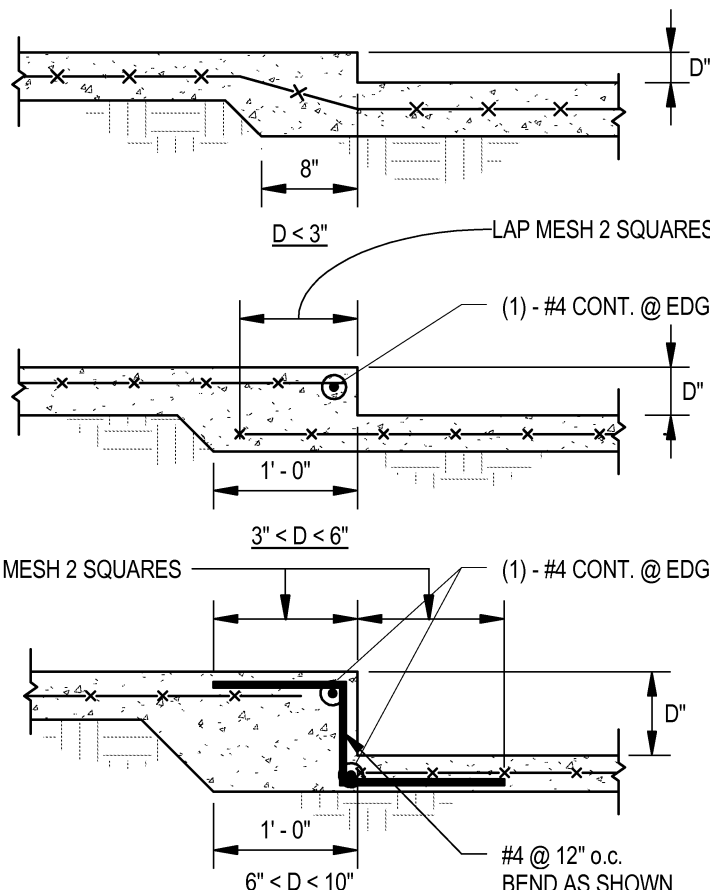
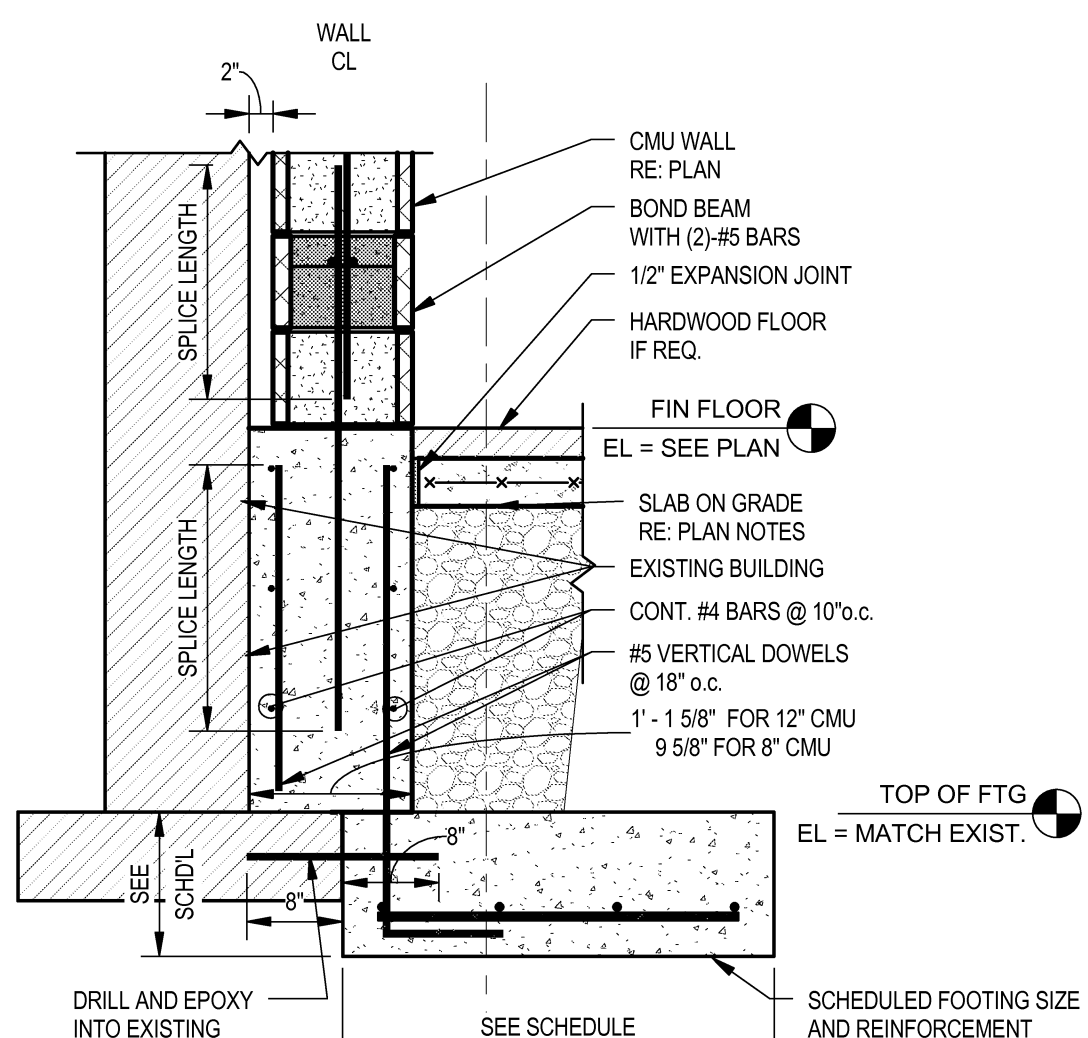


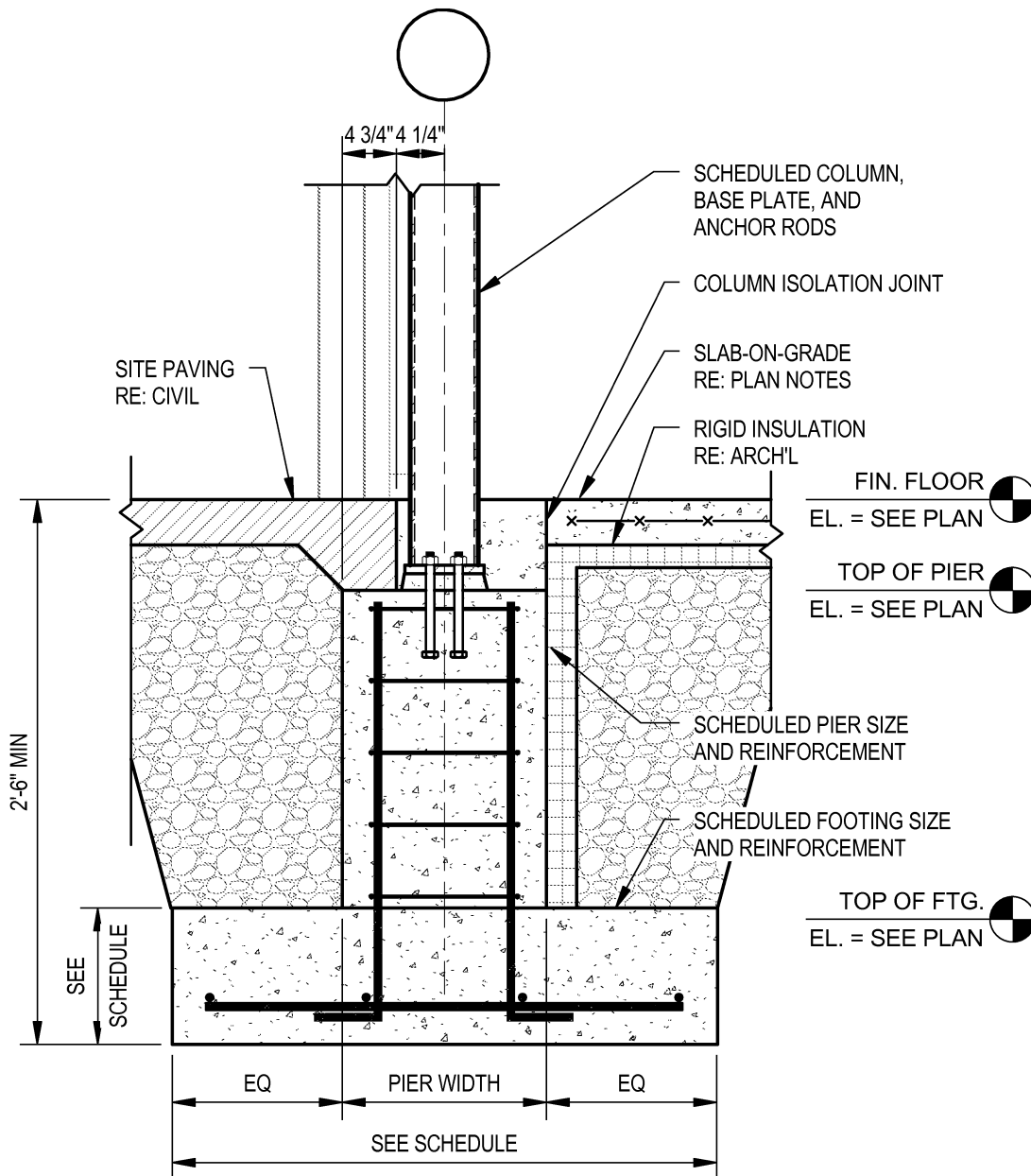
1 TYPICAL DETAIL
S4.01 SLAB-ON-GRADE CONTROL / CONSTRUCTION JOINT



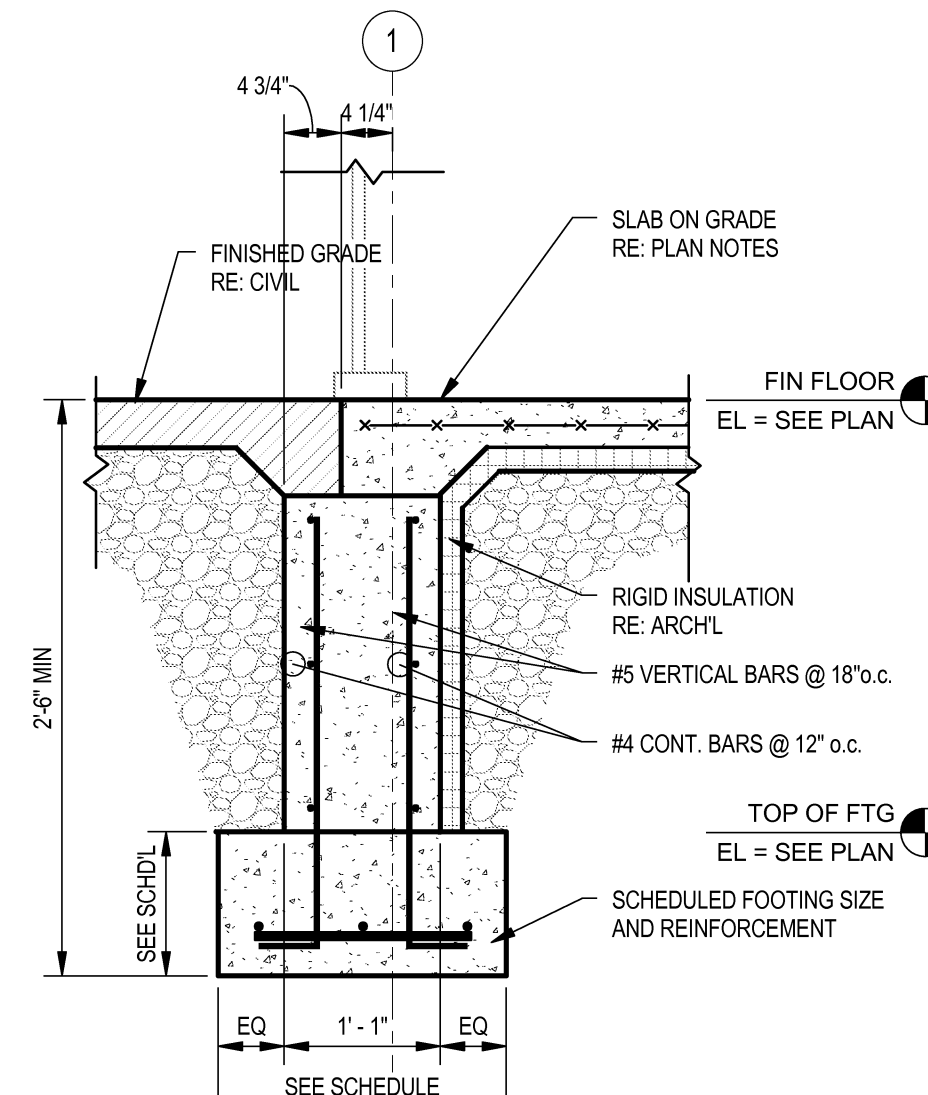
2 TYPICAL DETAIL
S4.01 SLAB-ON-GRADE w/WWF AT FLOOR DEPRESSION



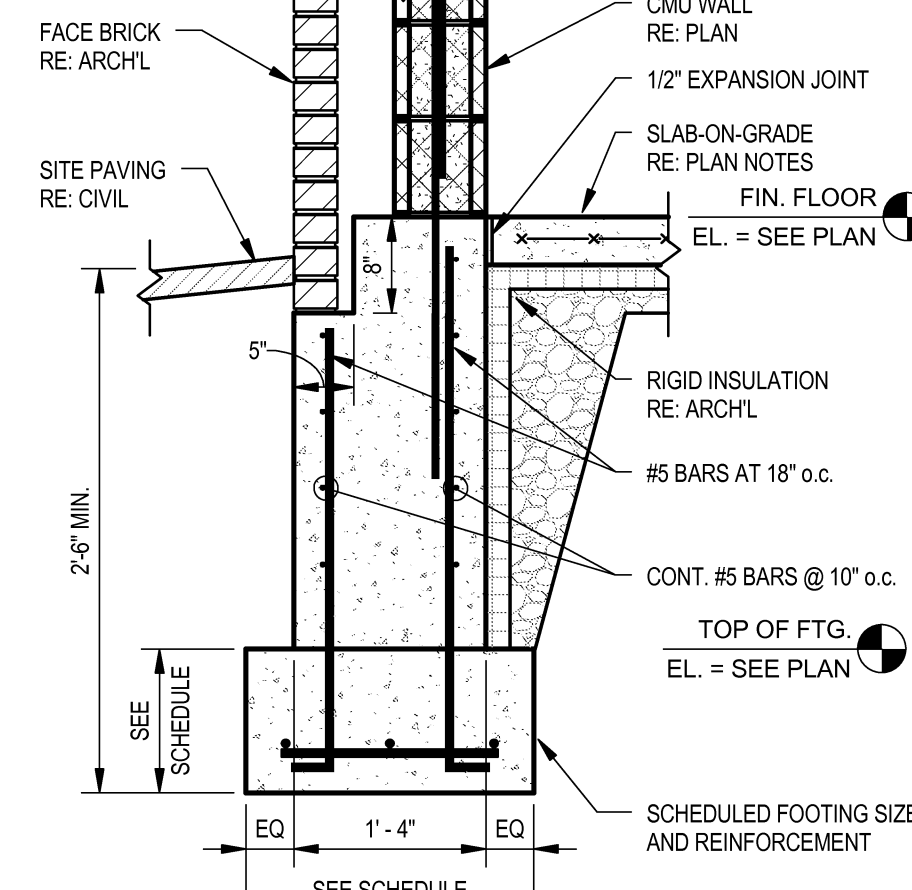
3 TYPICAL DETAIL
S4.01 FOUNDATION AT EXISTING BUILDING



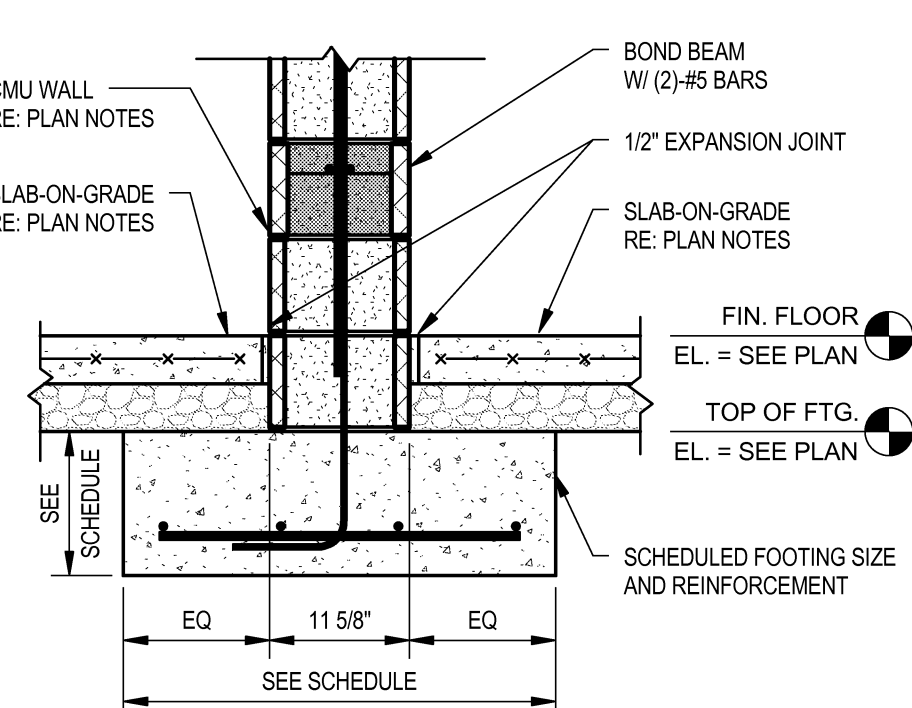
4 TYPICAL DETAIL
S4.01 PERIMETER COLUMN FOUNDATION



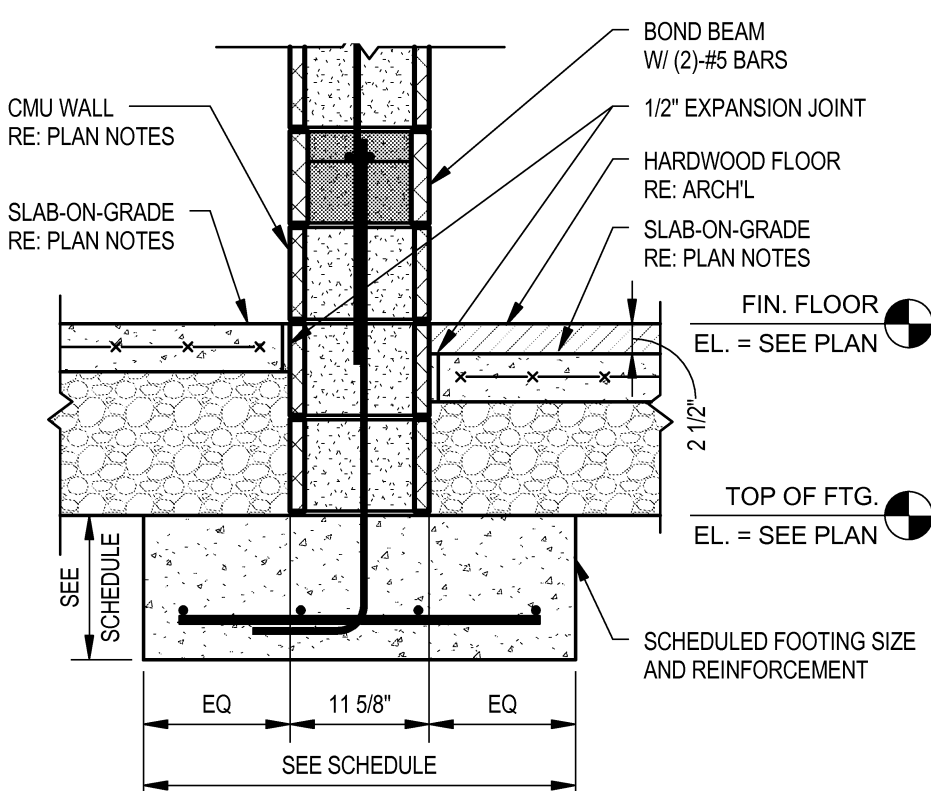
5 TYPICAL DETAIL
S4.01 13' FOUNDATION WALL DETAIL



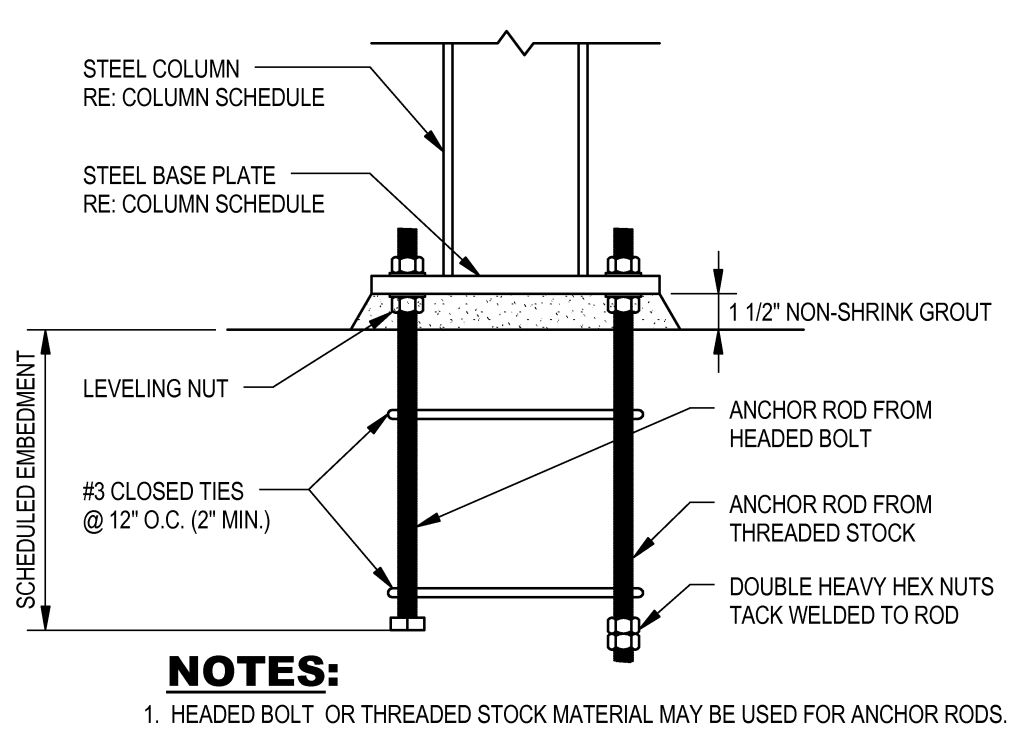
6 TYPICAL DETAIL
S4.01 16' FOUNDATION WALL DETAIL



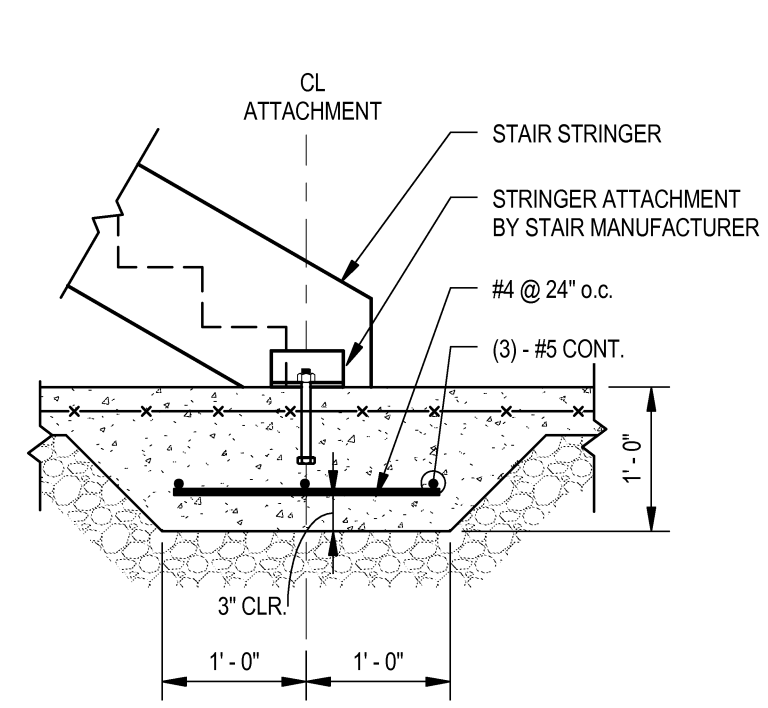
7 TYPICAL DETAIL
S4.01 INTERIOR CMU WALL FOUNDATION



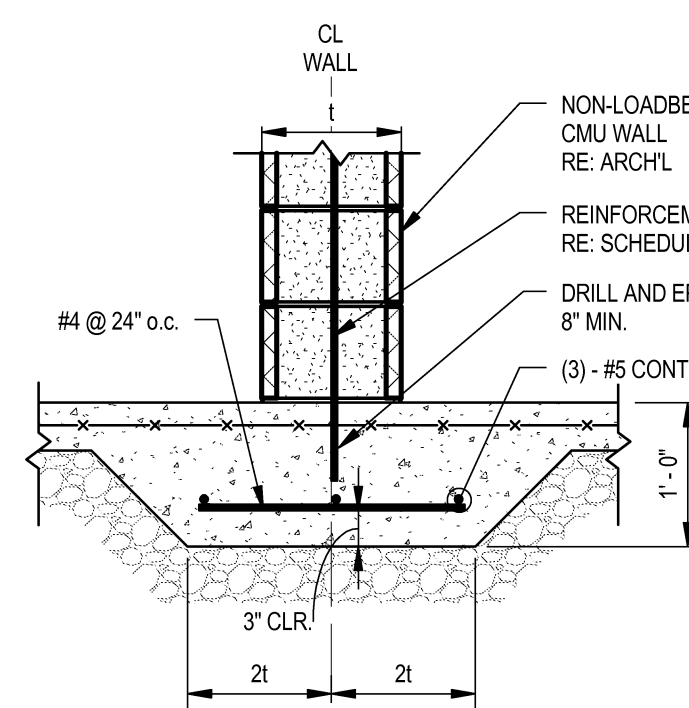
8 TYPICAL DETAIL
S4.01 INTERIOR CMU WALL FOUNDATION AT DEPRESSED FLOOR



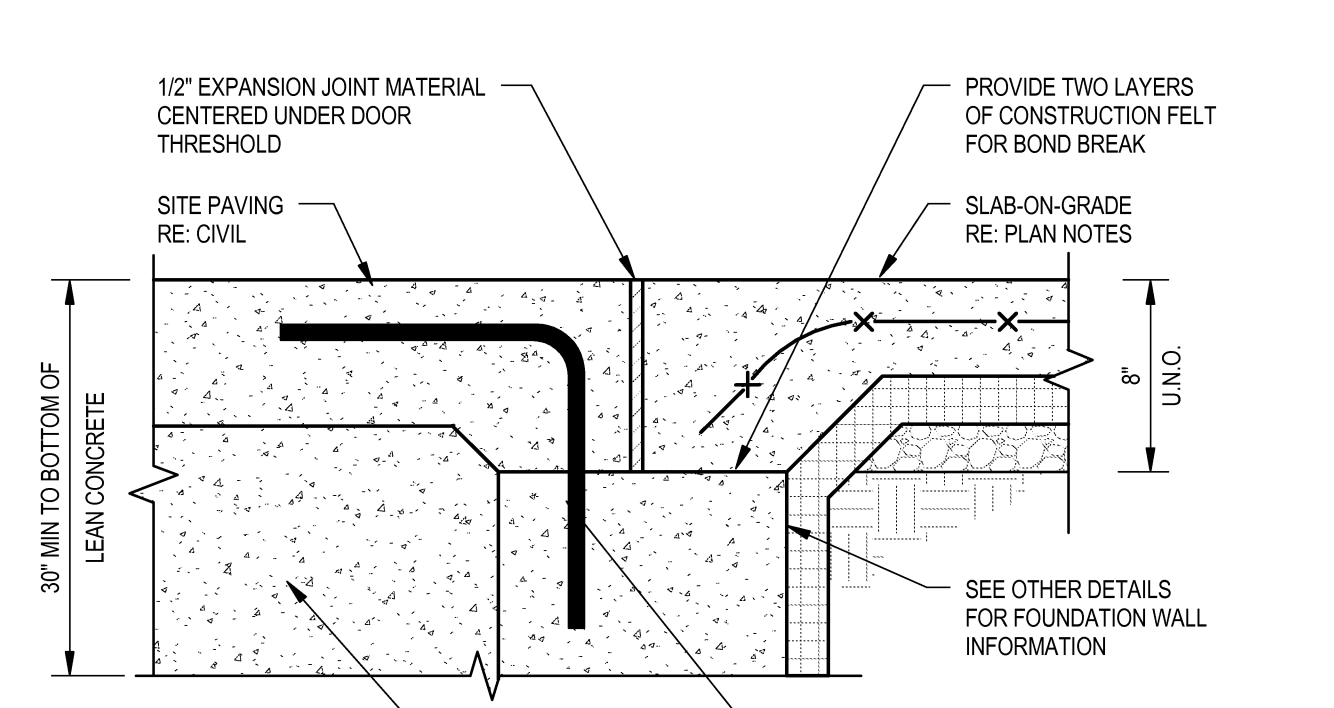
9 TYPICAL DETAIL
S4.01 COLUMN ANCHOR ROD REQUIREMENTS



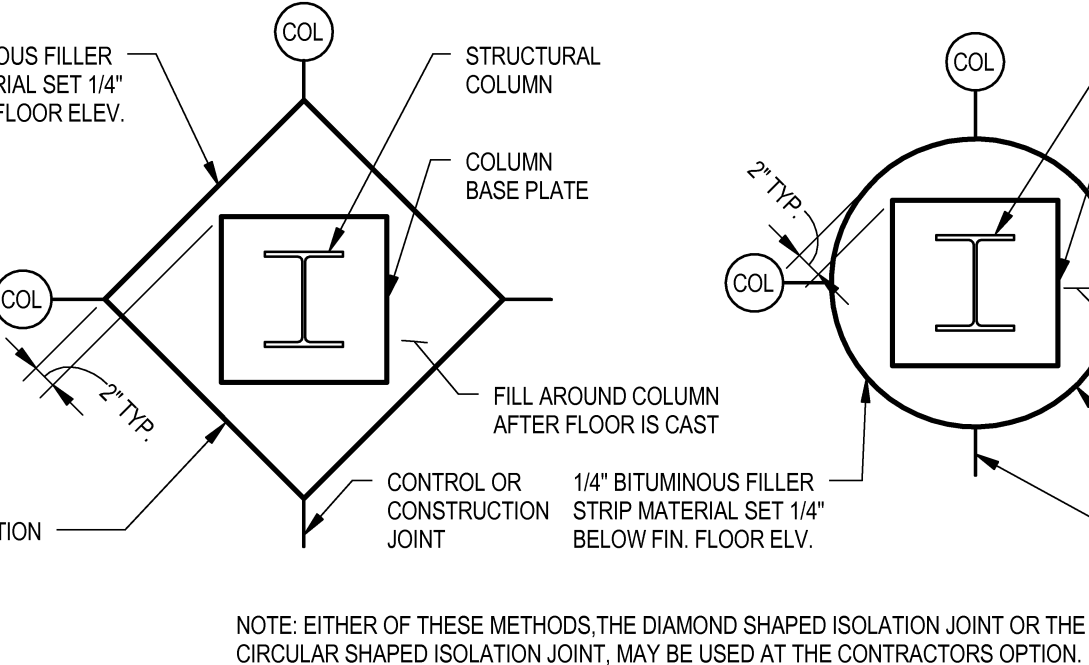
10 TYPICAL DETAIL
S4.01 THICKENED SLAB-ON-GRADE AT STAIR



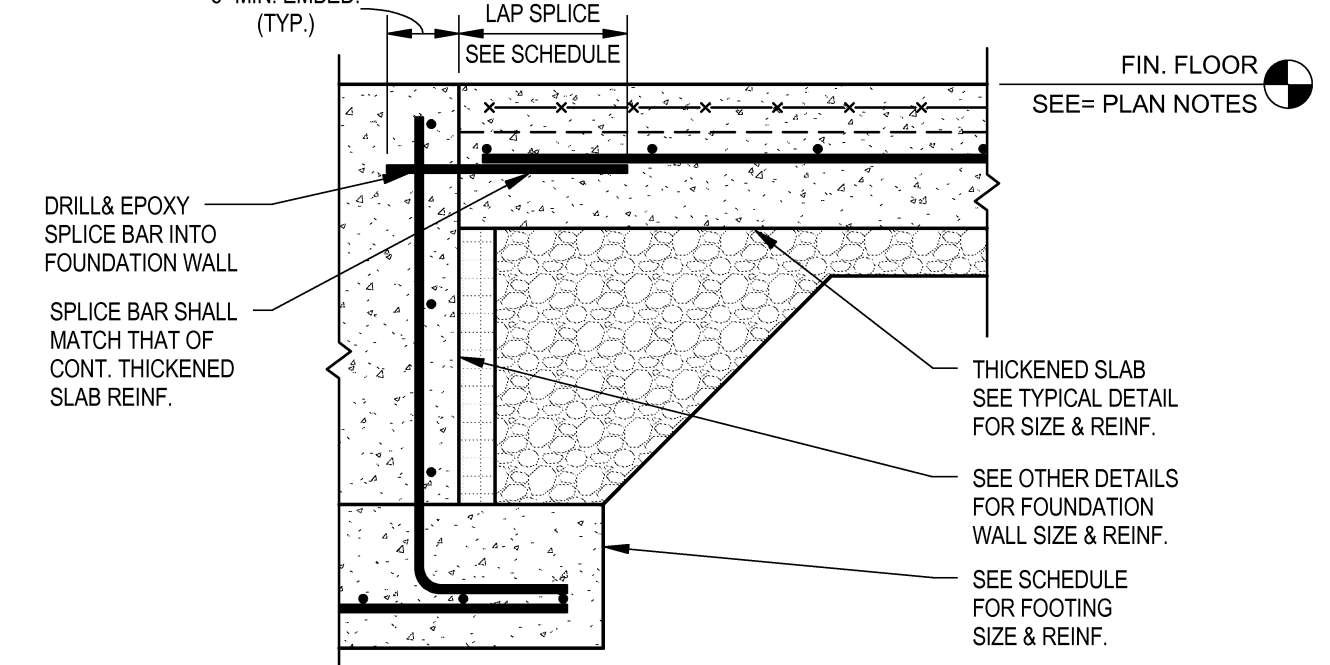
11 TYPICAL DETAIL
S4.01 THICKENED SLAB-ON-GRADE AT NON-LOADBEARING CMU WALL



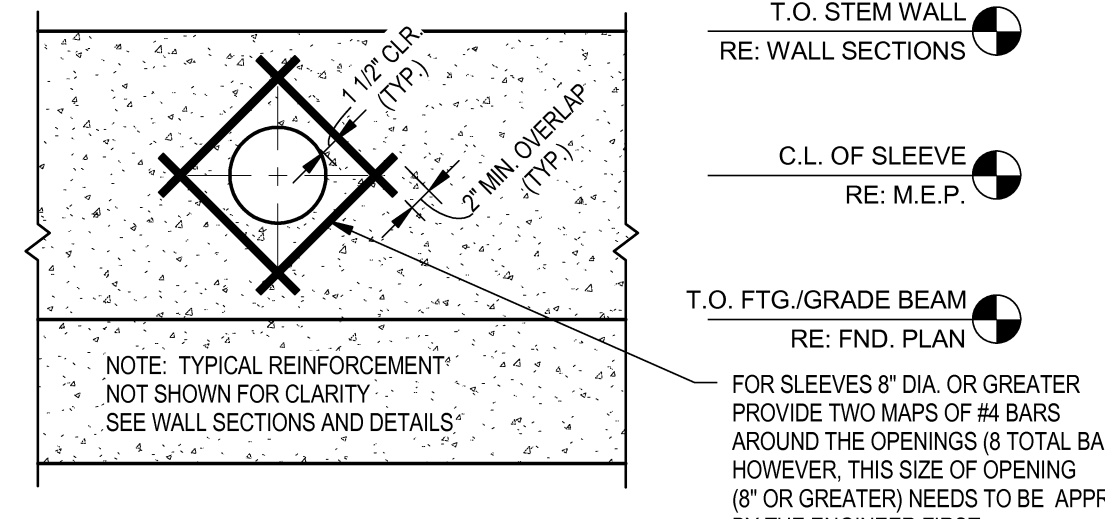
12 TYPICAL DETAIL
S4.01 SLAB EDGE AT ENTRY STOOP



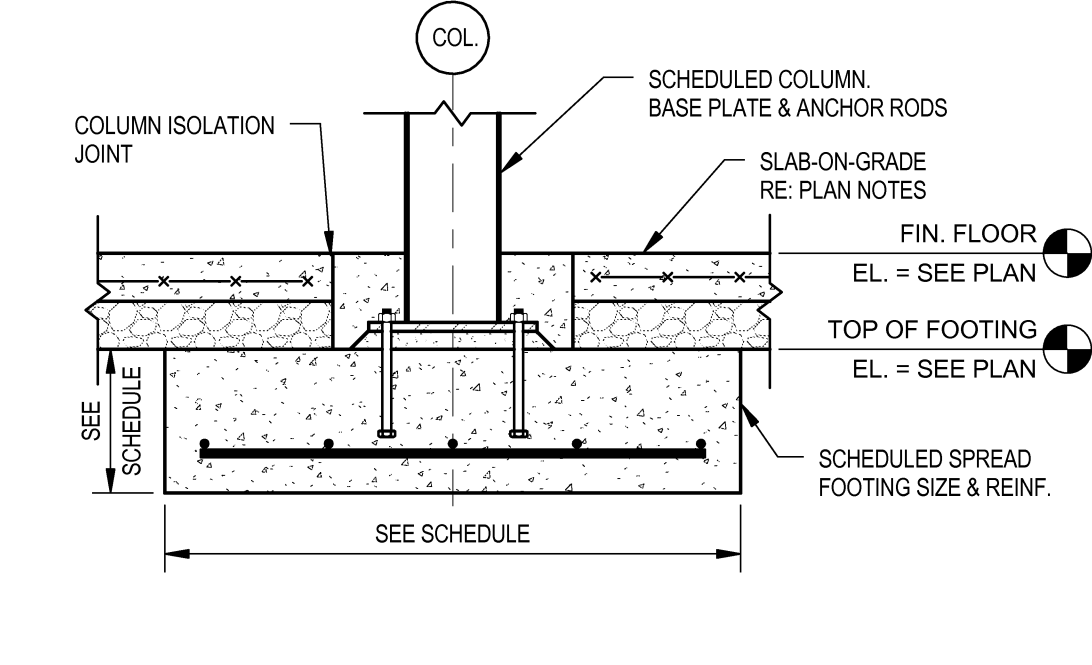
13 TYPICAL DETAIL
S4.01 COLUMN ISOLATION JOINT



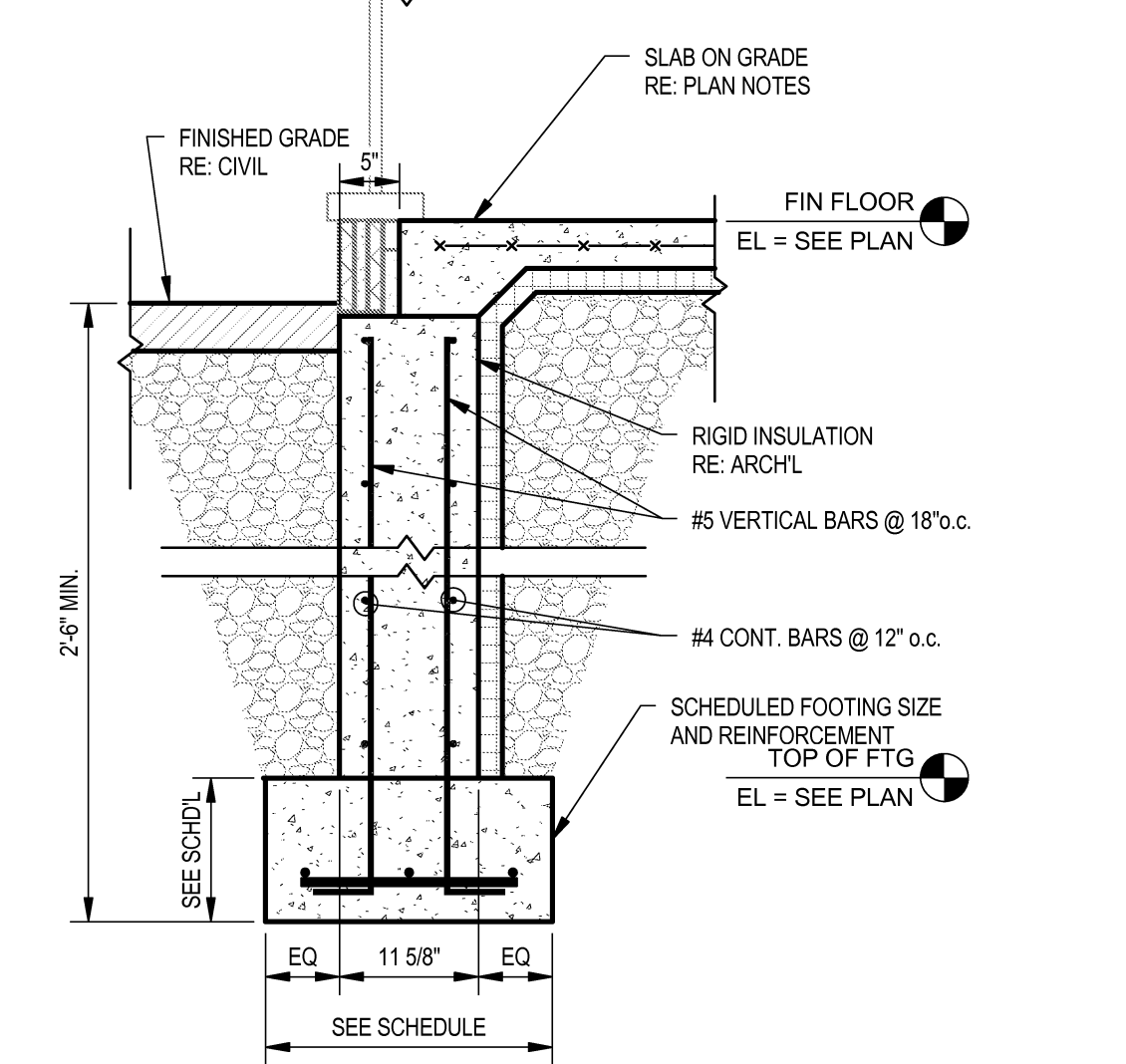
14 TYPICAL DETAIL
S4.01 THICKENED SLAB TO FOUNDATION WALL CONNECTION



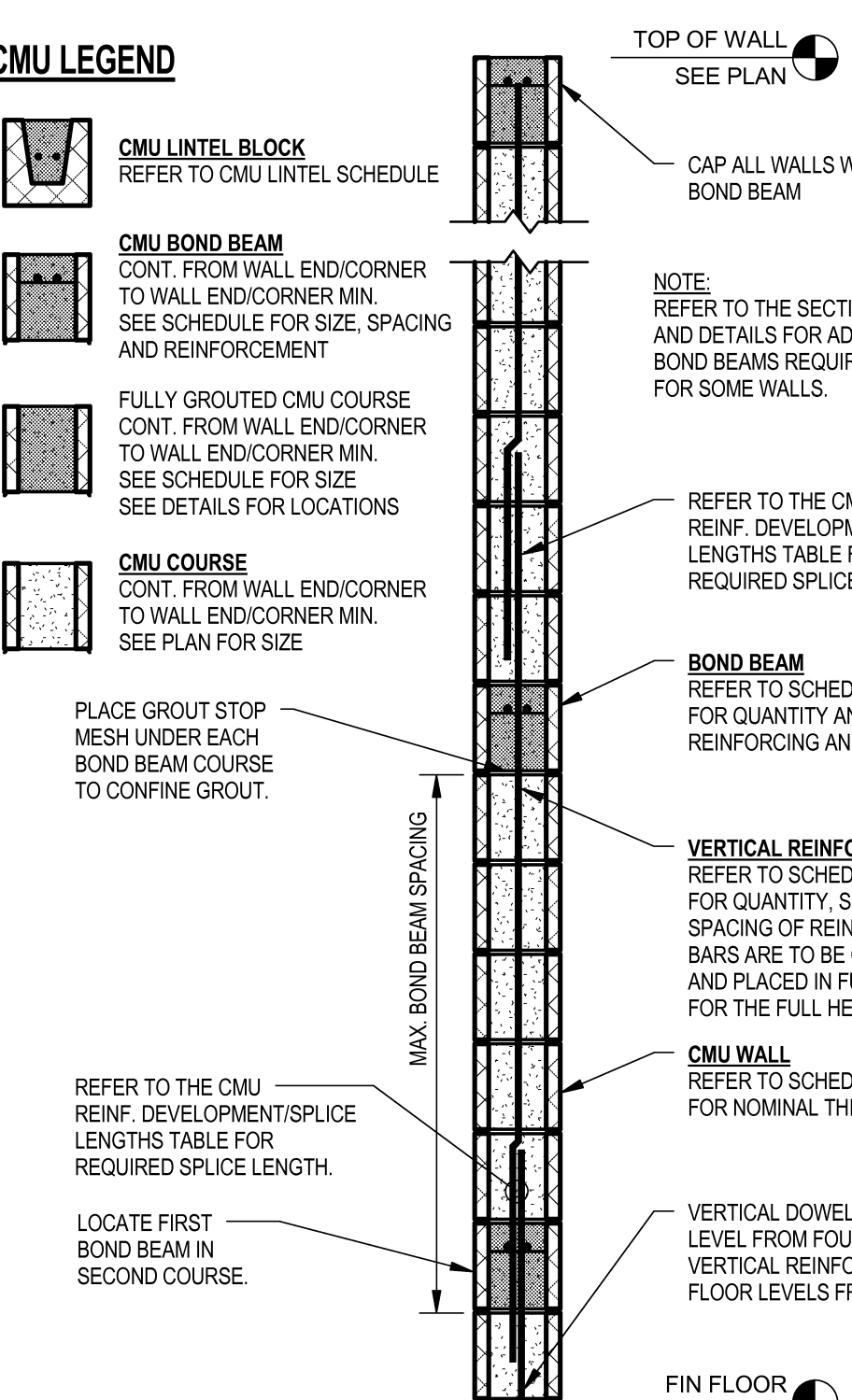
15 TYPICAL DETAIL
S4.01 FOUNDATION WALL PENETRATION REINFORCEMENT DETAIL



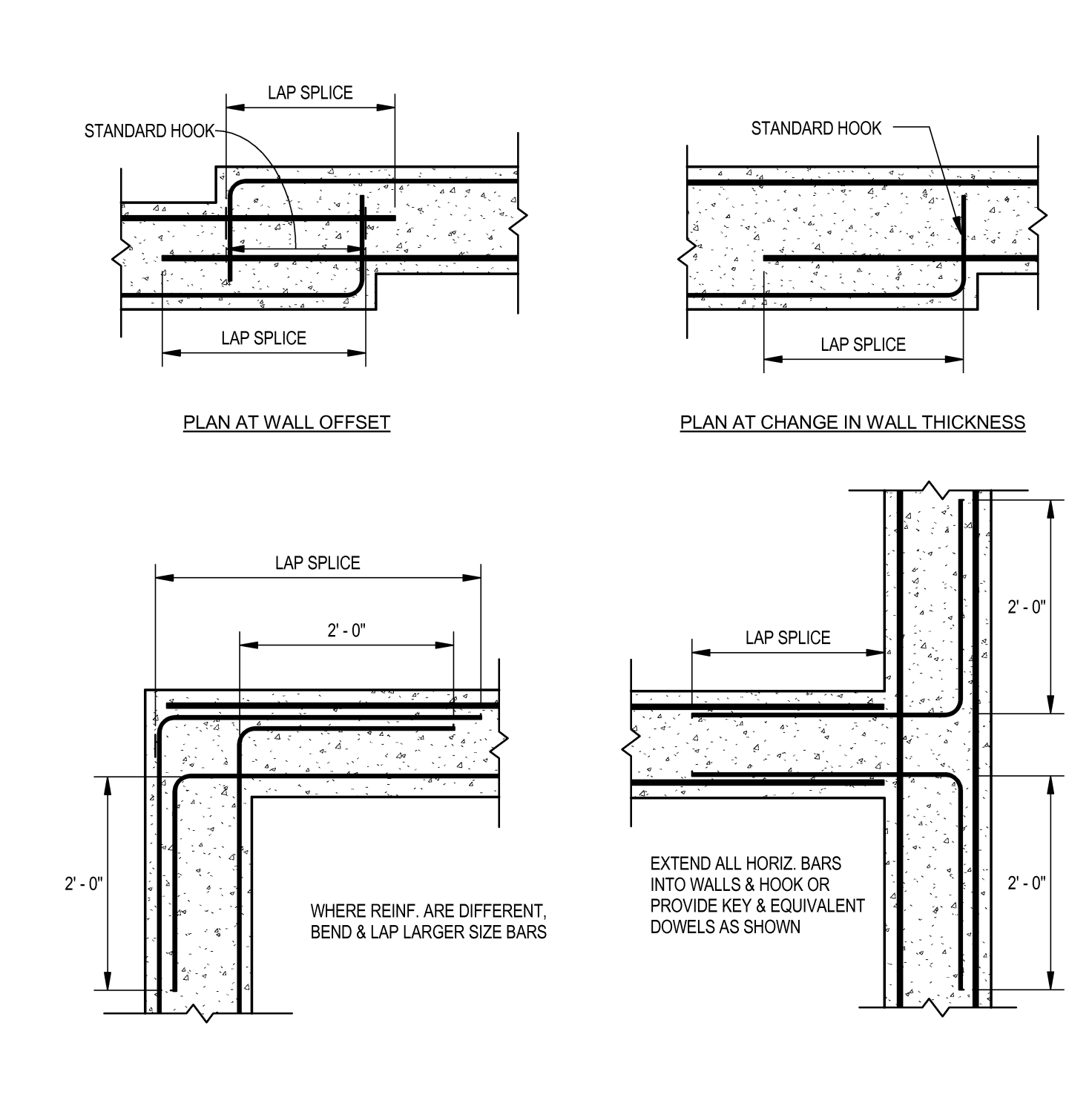
16 TYPICAL DETAIL
S4.01 INTERIOR COLUMN FOUNDATION



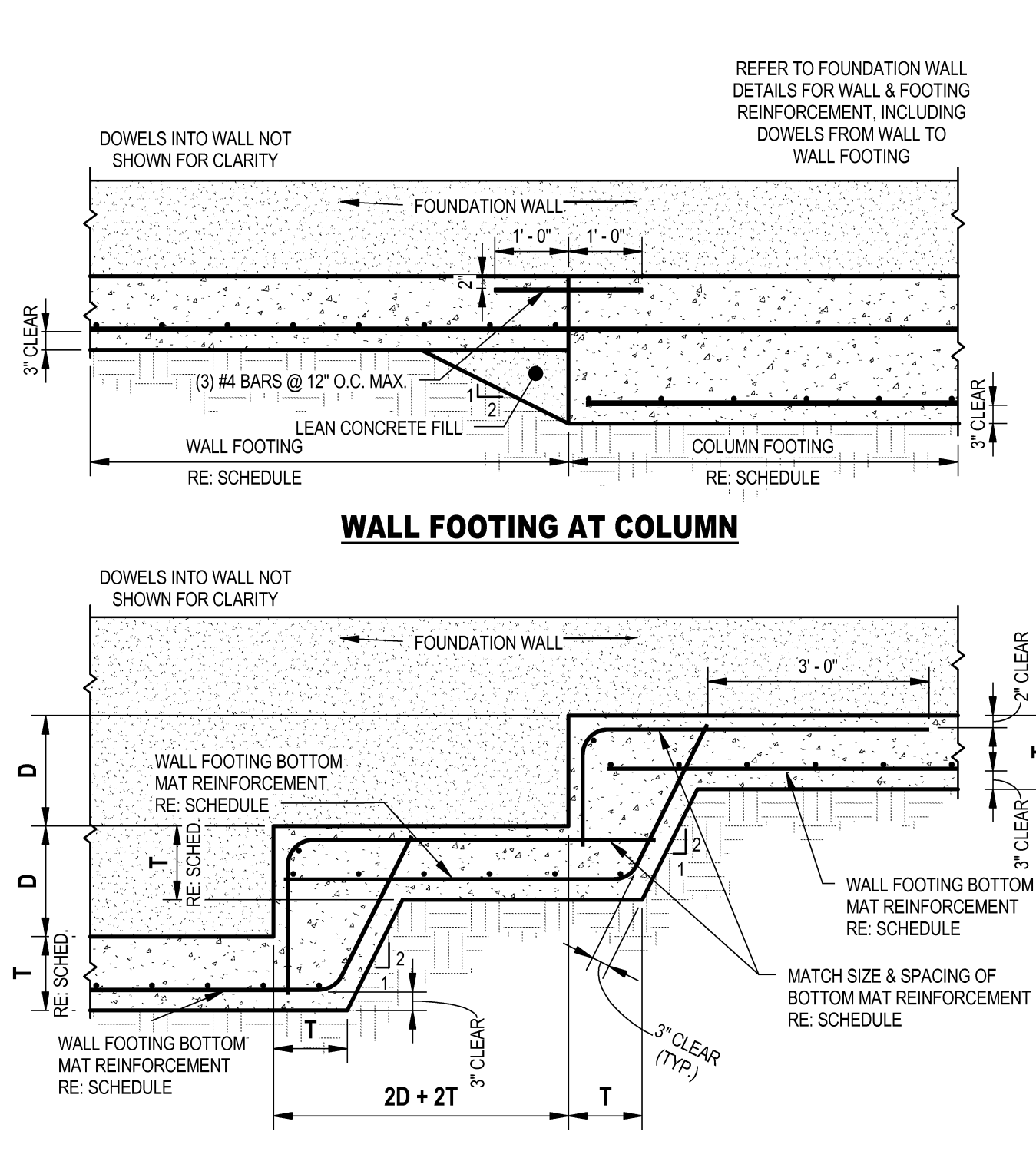
17 TYPICAL DETAIL
S4.01 11-58\"/>



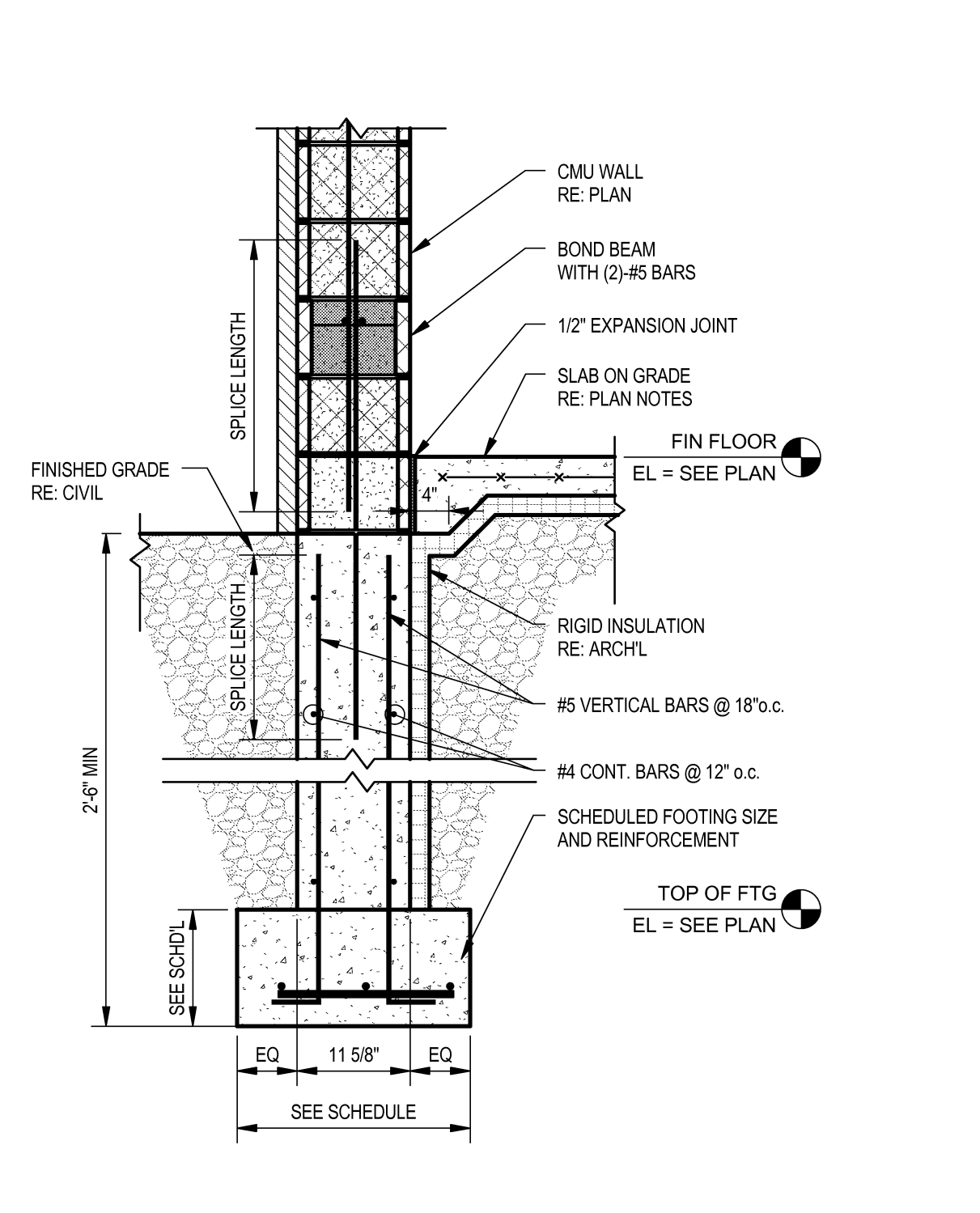
18 TYPICAL DETAIL
S4.01 LOAD-BEARING CMU WALL CONSTRUCTION



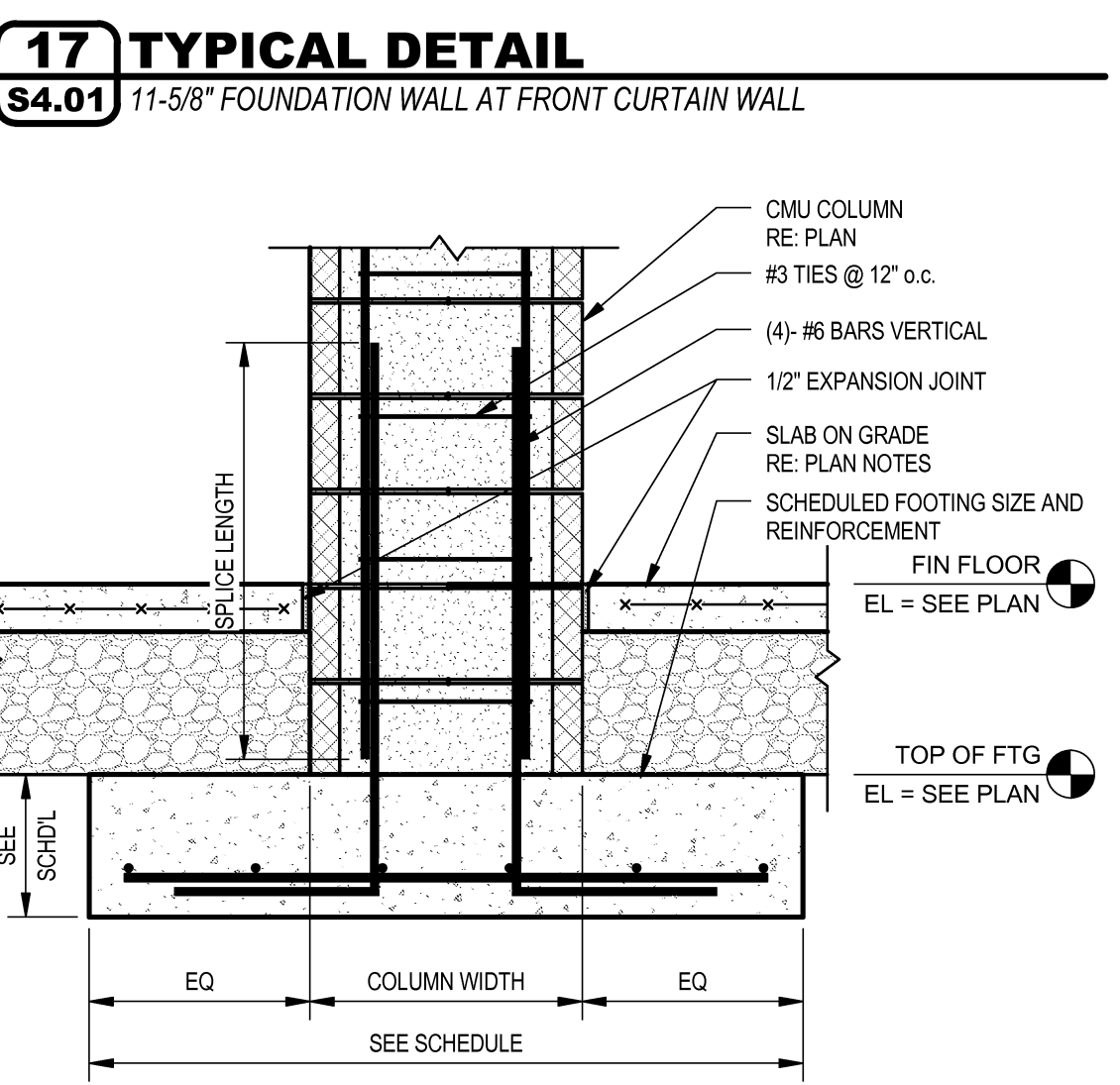
19 TYPICAL DETAIL
S4.01 HORIZONTAL REINFORCEMENT AT TRANSITION IN CONC. WALLS



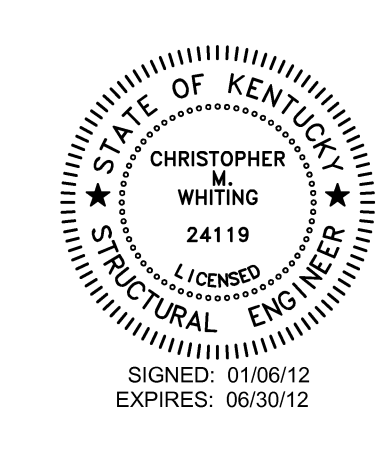
20 TYPICAL DETAIL
S4.01 WALL FOOTING STEPS



21 TYPICAL DETAIL
S4.01 11-58\"/>



22 TYPICAL DETAIL
S4.01 CMU COLUMN FOUNDATION



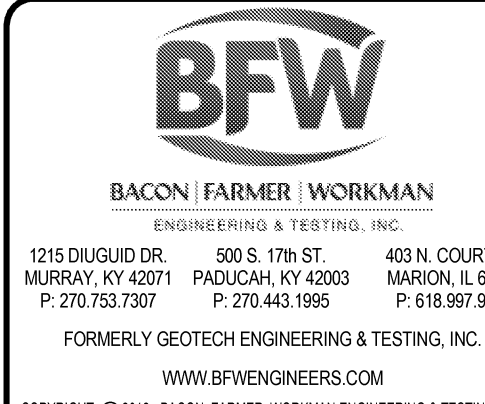
Hastings+Chivetta
ARCHITECTURE • PLANNING • ENGINEERING
622 Emerson, Suite 200 | Shelton, Missouri 63151 | Tel: 314.963.5717 | Fax: 314.963.2823 | www.hastingschivetta.com
CUII, BACON FARMER WORKMAN ENGINEERING & TESTING, INC. 1476 OLD DRYE, MURRAY, KENTUCKY 40371
STRUCTURAL, FACON FARMER WORKMAN ENGINEERING & TESTING, INC. 401 N. COURT ST., MARION, ILLINOIS 62959
MEP: MARCUM ENGINEERING, LLC, 509 SOUTH 17TH STREET, PADUCAH, KY, 40302

MURRAY STATE UNIVERSITY
FACILITIES DESIGN AND CONSTRUCTION
DEPARTMENT FOR FACILITIES MANAGEMENT
616 GILBERT DRIVE, MURRAY, KY 40371-3854
www.murray.edu

SPORTS PRACTICE FACILITY
MURRAY STATE UNIVERSITY
MURRAY, KENTUCKY
MURRAY STATE UNIVERSITY
MURRAY, KENTUCKY
MURRAY STATE UNIVERSITY
MURRAY, KENTUCKY
MURRAY STATE UNIVERSITY
MURRAY, KENTUCKY

MURRAY STATE UNIVERSITY
MURRAY, KENTUCKY
MURRAY STATE UNIVERSITY
MURRAY, KENTUCKY
MURRAY STATE UNIVERSITY
MURRAY, KENTUCKY

REVISIONS
Date - 1-10-2012
H+C Project No - 11194
FDC Project No - 10-007
BFW Project No - 11194
Marcum Project No - 11557
Sheet Name - FOUNDATION DETAILS



S4.01