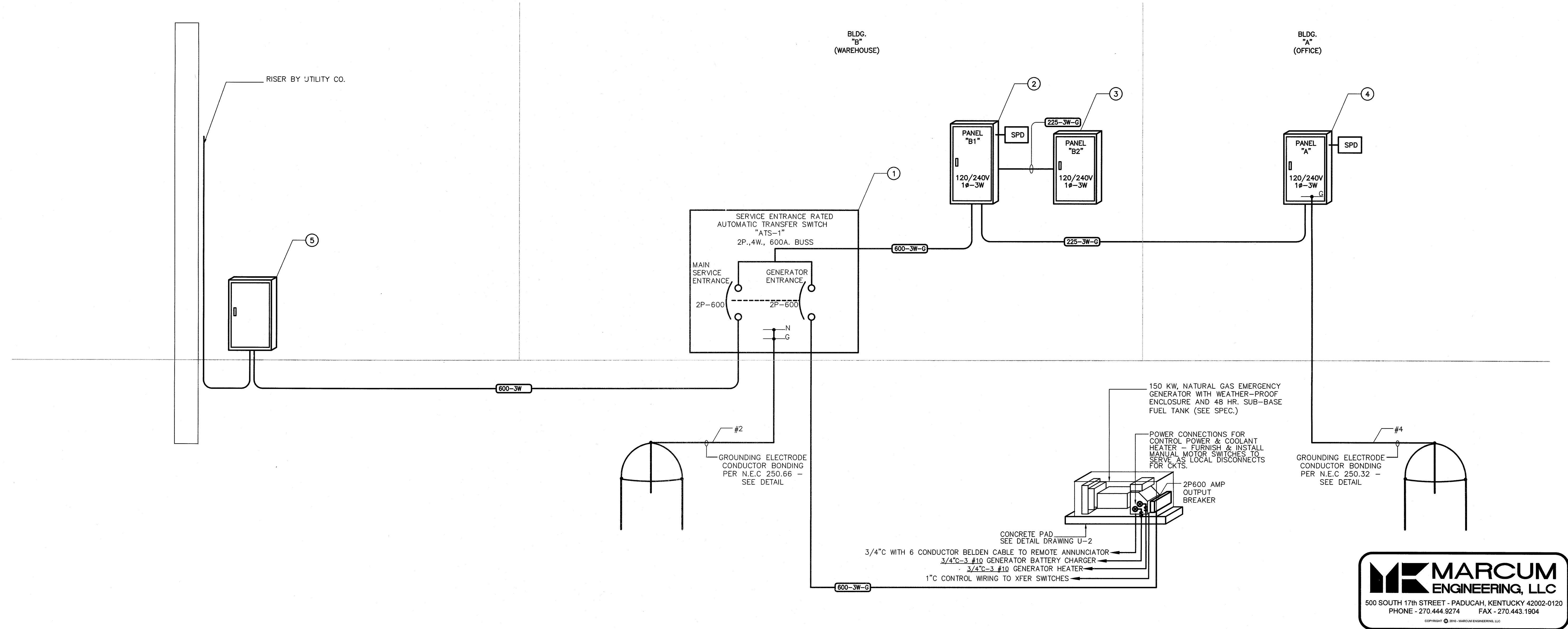


ELECTRICAL FEEDER SCHEDULE								
FEEDER CODE	CONDUIT/WIRE DESCRIPTION	TEMP RATING	FEEDER CODE	CONDUIT/WIRE DESCRIPTION	TEMP RATING	FEEDER CODE	CONDUIT/WIRE DESCRIPTION	TEMP RATING
*20-2W-G	1/2" C-3#12	*60°C	200-3W	2-1/2" C-3#3/0	75°C	700-4W-G	(2) SETS EA OF 4" C-4#500MCM, #1 GND	75°C
*20-3W-G	1/2" C-4#12		200-4W	2-1/2" C-4#3/0		800-4W	(2) SETS EA OF 4" C-4#600MCM	
*30-2W-G	1/2" C-3#10		200-3W-G	2-1/2" C-3#3/0, #6 GND		800-3W-G	(2) SETS EA OF 4" C-3#600MCM, #1/0 GND	
*30-3W-G	1/2" C-4#10		200-4W-G	2-1/2" C-4#3/0, #6 GND		800-4W-G	(2) SETS EA OF 4" C-4#600MCM, #1/0 GND	
*30-4W-G	1/2" C-4#10, #10 GND		225-3W	2-1/2" C-3#4/0		1000-4W	(3) SETS EA OF 3" C-4#350MCM	
*40-2W-G	1/2" C-2#8, #10 GND		225-4W	2-1/2" C-4#4/0		1000-3W-G	(3) SETS EA OF 3" C-4#350MCM, #2/0 GND	
*40-3W-G	3/4" C-3#8, #10 GND		225-3W-G	2-1/2" C-3#4/0, #4 GND		1000-4W-G	(3) SETS EA OF 3" C-4#350MCM, #2/0 GND	
*40-4W-G	3/4" C-4#8, #10 GND		225-4W-G	2-1/2" C-4#4/0, #4 GND		1200-4W	(3) SETS EA OF 4" C-4#600MCM	
*50-2W-G	3/4" C-2#8, #10 GND		250-4W	3" C-4#250MCM		1200-3W-G	(3) SETS EA OF 4" C-3#600MCM, #3/0 GND	
*50-3W-G	3/4" C-3#8, #10 GND		250-3W-G	3" C-3#250MCM, #4 GND		1200-4W-G	(3) SETS EA OF 4" C-4#600MCM, #3/0 GND	
*50-4W-G	1" C-4#8, #10 GND		250-4W-G	3" C-4#250MCM, #4 GND		1600-4W	(4) SETS EA OF 4" C-4#600MCM	
*60-2W-G	1" C-2#4, #10 GND		300-3W-G	3" C-3#350MCM, #4 GND		1600-3W-G	(4) SETS EA OF 4" C-3#600MCM, #4/0 GND	
*60-3W-G	1" C-3#4, #10 GND		300-4W-G	3" C-4#350MCM, #4 GND		1600-4W-G	(4) SETS EA OF 4" C-4#600MCM, #4/0 GND	
*60-4W-G	1" C-4#4, #10 GND		400-3W	4" C-3#600MCM		2500-4W	(7) SETS EA OF 4" C-4#600MCM	
*80-2W-G	1" C-2#3, #8 GND		400-4W	4" C-4#600MCM		2500-3W-G	(7) SETS EA OF 4" C-3#600MCM, #4/0 GND	
*80-3W-G	1-1/4" C-3#3, #8 GND		400-3W-G	3-1/2" C-3#600MCM, #3 GND		2500-4W-G	(7) SETS EA OF 4" C-4#600MCM, #4/0 GND	
*80-4W-G	1-1/4" C-4#3, #8 GND		400-4W-G	4" C-4#600MCM, #3 GND		3000-4W	(8) SETS EA OF 4" C-4#600MCM	
*100-3W	1-1/2" C-3#1		450-3W-G	(2) SETS EA OF 2" C-3#4/0, #2 GND		3000-3W-G	(8) SETS EA OF 4" C-3#600MCM, #4/0 GND	
*100-4W	1-1/2" C-4#1		450-4W-G	(2) SETS EA OF 2 1/2" C-4#4/0, #2 GND		3000-4W-G	(8) SETS EA OF 4" C-4#600MCM, #4/0 GND	
*100-3W-G	1-1/2" C-3#1, #8 GND		500-3W-G	(2) SETS EA OF 2 1/2" C-3#250MCM, #2 GND		4000-4W	(10) SETS EA OF 4" C-4#600MCM	
*100-4W-G	1-1/2" C-4#1, #8 GND		500-4W-G	(2) SETS EA OF 3" C-4#250MCM, #2 GND		4000-3W-G	(10) SETS EA OF 4" C-3#600MCM, #4/0 GND	
125-3W-G	1-1/2" C-3#1, #6 GND	75°C	600-3W	(2) SETS EA OF 3" C-3#350MCM		4000-4W-G	(10) SETS EA OF 4" C-4#600MCM, #4/0 GND	
125-4W-G	1-1/2" C-4#1, #6 GND		600-4W	(2) SETS EA OF 3" C-3#350MCM, #1 GND				
150-3W-G	1-1/2" C-3#1/0, #6 GND		600-4W	(2) SETS EA OF 3" C-4#350MCM				
150-4W-G	1-1/2" C-4#1/0, #6 GND		800-4W-G	(2) SETS EA OF 3" C-4#350MCM, #1 GND				
175-3W-G	2" C-3#2/0, #6 GND		700-4W	(2) SETS EA OF 4" C-4#500MCM				
175-4W-G	2" C-4#2/0, #6 GND		700-3W-G	(2) SETS EA OF 4" C-3#500MCM, #1 GND				

UTILITY NOTE:
 CONTRACTOR SHALL INCLUDE IN THE CONTRACT ALL UTILITY COMPANY FEES AND OR CHARGES, ASSOCIATED WITH ESTABLISHING ELECTRICAL SERVICE TO THE BUILDING AND OR SITE. THIS SHALL INCLUDE ALL COSTS AND MATERIAL ASSOCIATED WITH PRIMARY CONDUIT, CABLING, POLES, METERING EQUIPMENT, TAP CABINETS, TERMINATION CABINETS, TRANSFORMERS, DISTRIBUTION EQUIPMENT, ETC. CONTRACTOR SHALL CONTACT UTILITY CO PRIOR TO BIDDING. CONTRACTOR SHALL COORDINATE ALL MAIN SERVICE REQUIREMENTS AND LOCATIONS WITH UTILITY COMPANY, PRIOR TO BIDDING. ALL ROUGH-INS (PAD, CONDUIT GROUNDING ETC. SHALL COMPLY WITH UTILITY COMPANY STANDARDS.

CONSTRUCTION NOTES	
(APPLIES TO THIS DRAWING ONLY)	
#	
1	2P600A SERVICE RATED (BREAKER TYPE) A.T.S.
2	2P600A MCB, 54 BREAKER PANEL (SERVICE RATED).
3	2P225A MLO, 54 BREAKER PANEL (NON-SERVICE RATED).
4	2P225A MCB, 54 BREAKER PANEL (NON-SERVICE RATED).
5	TERMINAL BOX PER UTILITY CO. INSTALLED BY E.C.

* EQUIPMENT PROVISIONS FOR ELECTRICAL CONNECTIONS - TEMPERATURE LIMITATIONS SHALL COMPLY WITH NEC ARTICLE 110.14 FOR CIRCUITS RATED 100A OR LESS.
 WIRE SIZES ARE BASED ON TYPE "THHN" COPPER CONDUCTORS, WITH NOT MORE THAN THREE CURRENT CARRYING CONDUCTORS IN RACEWAY - DERATE PER TABLE 310.15 AS APPLICABLE.



ELECTRICAL POWER RISER DIAGRAM
 NO SCALE

MARCUM ENGINEERING, LLC
 500 SOUTH 17th STREET - PADUCAH, KENTUCKY 42002-0120
 PHONE - 270.444.9274 FAX - 270.443.1904

castleberry megregor swinford ARCHITECTS

ELECTRICAL POWER RISER DIAGRAMS - BLDG. A AND BLDG. B

E-7
 of 13

DATE 10/01/10

BENTON GAS SYSTEM Project No. 10560