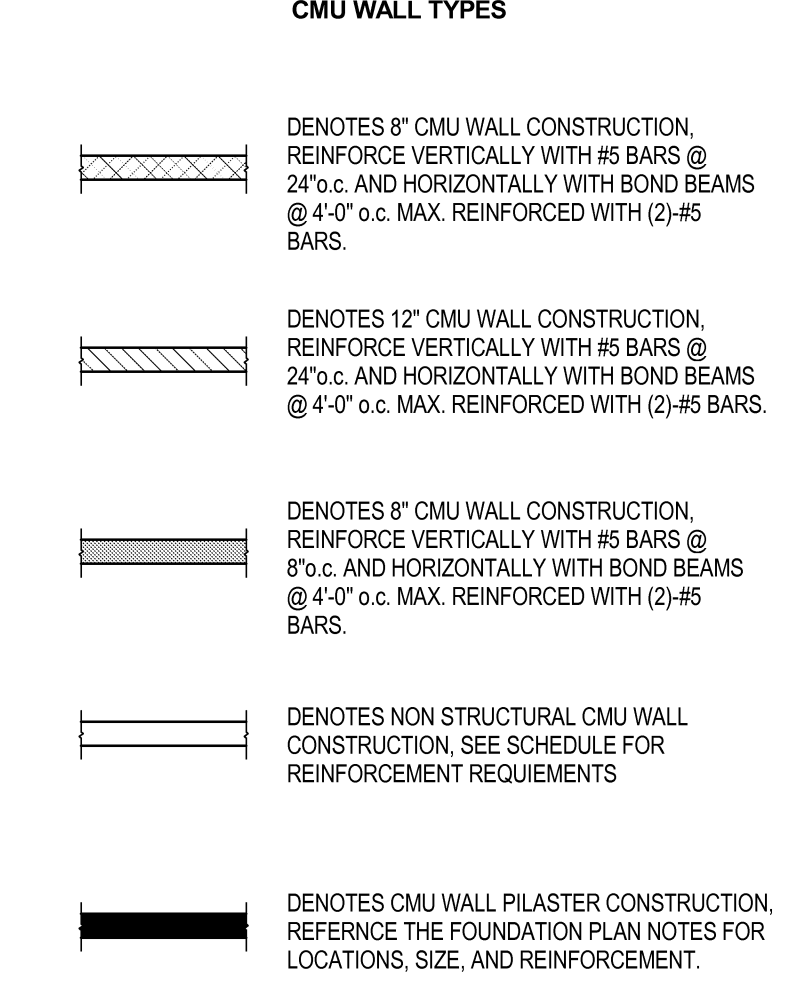
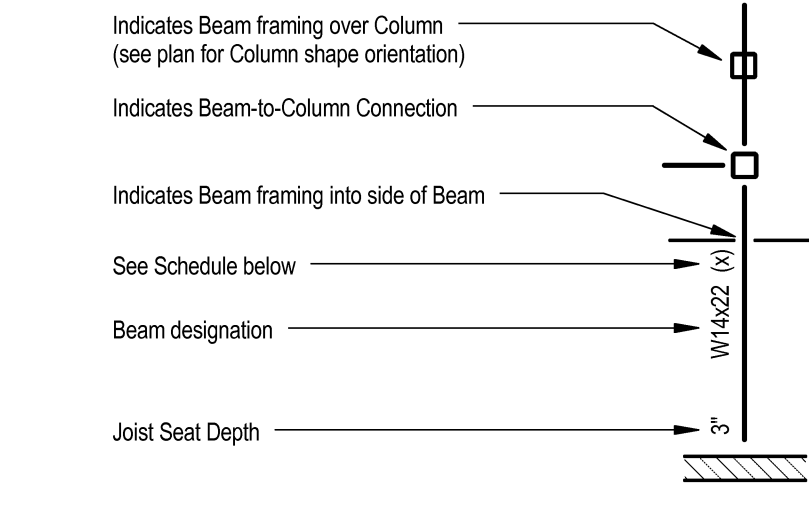


* DENOTES THE ELEVATION IS TO MATCH THE EXISTING ELEVATION



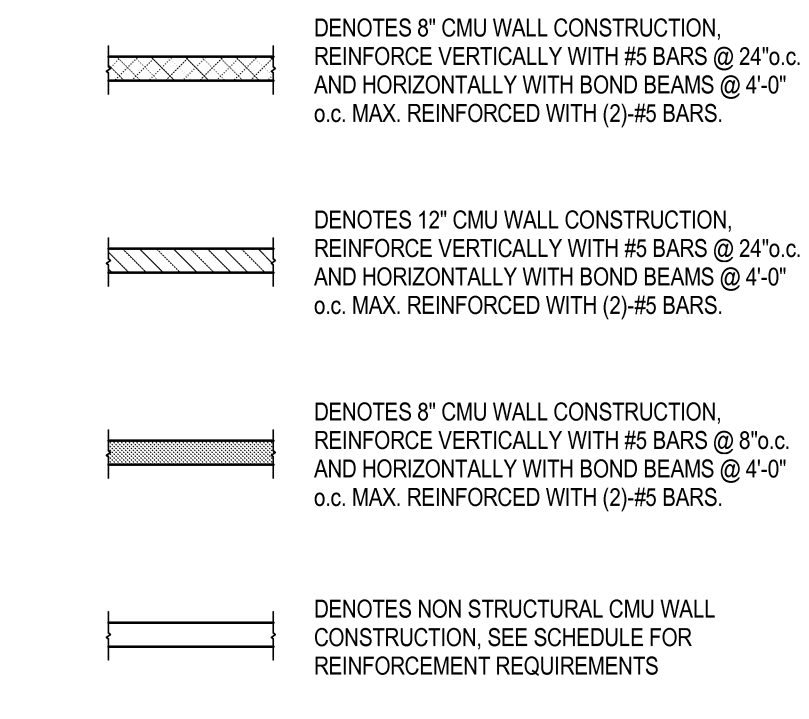
STRUCTURAL STEEL LEGEND

CONVENTIONAL CONSTRUCTION
NOTE: Bar Joists shall bear on top of supporting structural elements with standard depth joist seats. Exceptions are noted on plans & details.



(X)	DESIGNATION
(X-C)	Top of Steel Elevation
Blank	None - Top of Steel Elevation to be determined by floor construction
(S)	Sloped Beam
(BB)	Bent Beam (see detail as indicated on plan)
(C)	Cantilever Beam
(WH)	Web Horizontal
(R)	Radiused Beam

CMU WALL TYPES



DENOTES CMU WALL PILASTER CONSTRUCTION, REFERENCE THE FOUNDATION PLAN NOTES FOR LOCATIONS, SIZE, AND REINFORCEMENT.

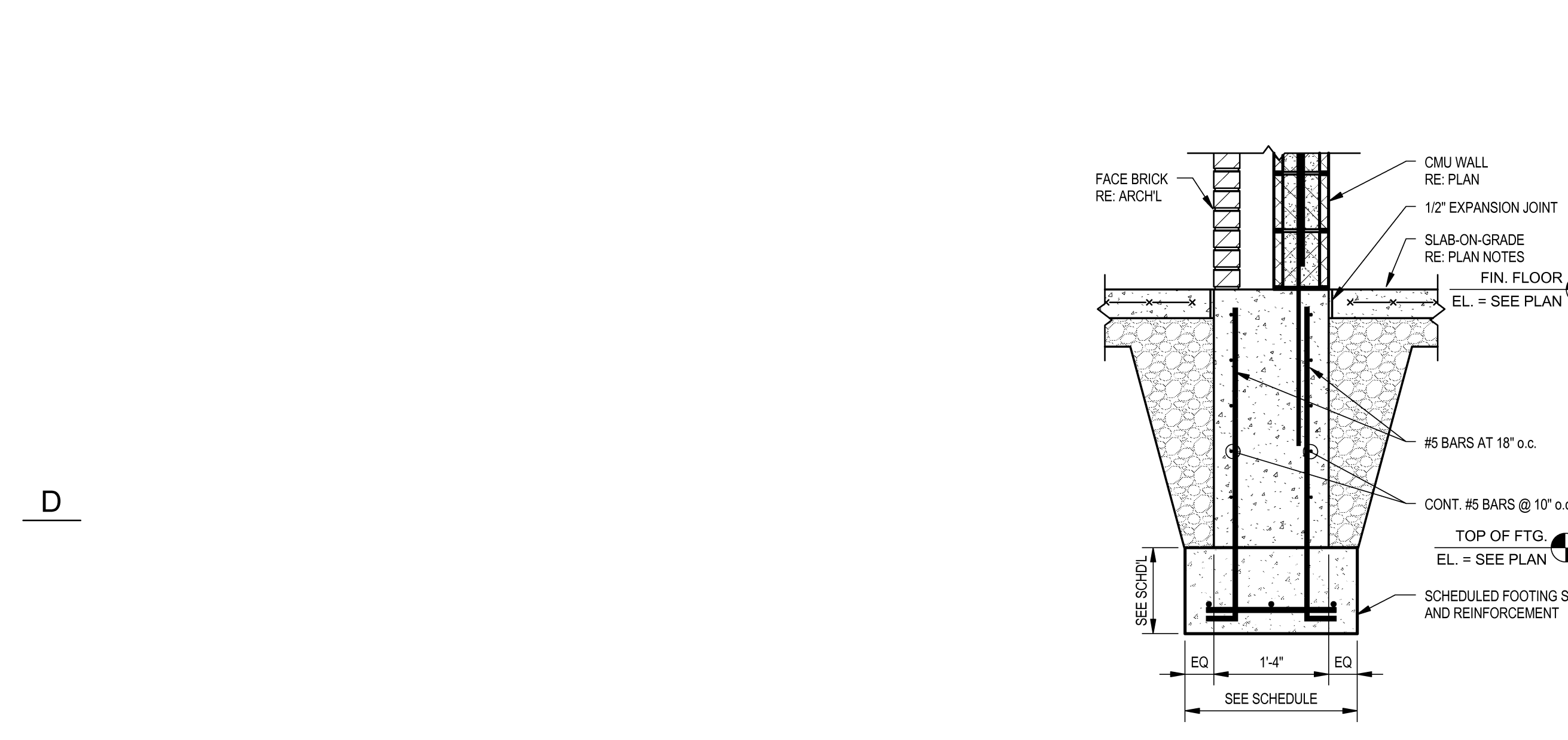
PLAN NOTES - FOUNDATION

- The finished floor elevation shall be +100'-0" unless noted otherwise.
- The slab-on-grade construction shall be 4" normal weight concrete on plastic vapor retarder on 4" of compacted porous aggregate fill. Reinforce the slab with WWF 6x6-W2.9xW2.9 (flat sheets only). WWF shall be adequately supported by and tied to wire slab bolsters. The use of masonry blocks to support the WWF is prohibited.
- Provide control joints (and construction joints if needed) in the slab-on-grade per the typ. Slab-on-grade joint construction detail. Control joints shall be located at column centerlines and spaced at 12'-0" maximum in between.
- The footings have been designed for a net allowable soil bearing pressure of 2000 psf and 2500 psf for continuous and spread footings respectively. The bearing stratum of all footings shall be inspected and approved by the geotechnical engineer prior to pouring concrete.
- For information on soil condition and special soil conditions on excavation, filling, and backfilling see the geotechnical exploration report. For conditions where engineered fill is required, placement and compaction shall be overseen by the testing laboratory.
- Place footings in the same day excavations are opened. If this is not possible, adequately protect the exposed material in the bases of the footing excavations from any detrimental change in condition such as disturbance from rain or freezing. Prevent surface runoff from entering excavations.
- Mechanical openings through concrete walls & slabs larger than 8 inches in diameter, not shown on the structural drawings, must be approved by the engineer. Openings 8 inches in diameter or less shall have at least 1 foot clear between openings unless approved by the engineer. Coordinate the installation of sleeves with the construction of formwork & installation of reinforcing steel.
- All column piers shall be centered beneath columns and poured monolithically with the foundation walls, unless noted otherwise.
- All spread footings shall be centered beneath the columns. All continuous wall footings shall be centered beneath the walls.
- All reinforcement anchorages and lap splices shall meet the requirements of ACI 318-08.
- Field bending of reinforcement is prohibited.
- Foundation wall reinforcement shall be continuous thru column piers. Wall footing reinforcement shall be continuous thru spread footings. Provide corner bars for all foundation walls and wall footings.
- All vertical reinforcement dowels in walls and piers shall be tied to the bottom reinforcement mat of the footings. "Floating" the dowels into place during concrete placement will not be permitted.
- Vertical flush wall pilasters shall be constructed full height in all CMU walls adjacent to all wall openings, wall intersections including corner and tee intersections, at beam bearing, lintel bearing, basketball goal mounting locations, DLH roof joist bearing locations and column bearing locations. Pilasters are required at these locations even if they are not indicated on the plan sheets. Pilasters shall be 1'-4" in length and reinforced with (2)-#5 bars in each cell unless noted otherwise.
- All ground level, non-loadbearing cmu walls shall bear on a thickened slab whether they are noted on plan or not. See the "thickened slab-on-grade at stair / non-bearing cmu wall" for required construction of the thickened slab.

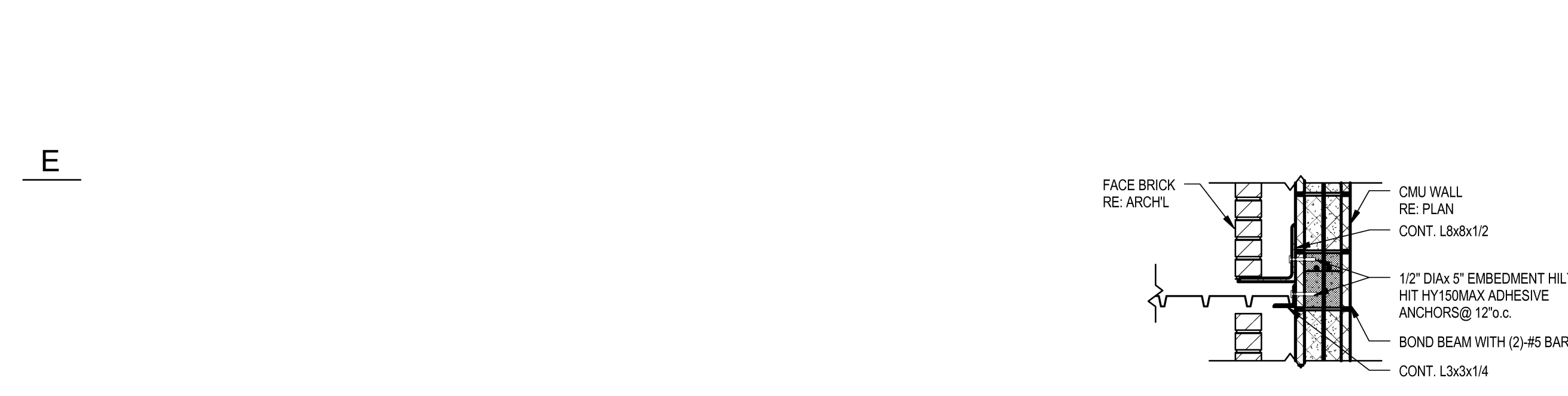
PLAN NOTES - ROOF FRAMING

- Roof construction for the Hall of Fame and the entrance canopy shall be 1 1/2"x20 ga. type b, galvanized metal deck over steel joists. Fasten deck to supporting steel with 5/8" puddle welds at the support fasteners and #10 TEK screws at the sidelap fasteners in a 36/7 pattern. Install 5 side lap fasteners per span.
- All k-series joists shall have a standard bearing seat depth of 2 1/2" U.N.O.
- All roof joists bridging and their connections shall be designed for a net uplift of 15 psf.
- Splicing of structural steel members in the shop or field is prohibited without prior approval from the engineer.
- Sequence welding to minimize weld shrinkage stresses and base material warping.
- Burning of holes or enlarging of holes by burning structural steel is not allowed.
- The fabricator shall be responsible for all errors of detailing on the shop drawings, errors in fabrication, and for the correct fitting of structural steel members.
- See the loose lintel schedule for all openings in non-load bearing masonry. The general contractor shall coordinate all openings in the masonry with the steel fabricator.
- Vertical flush wall pilasters shall be constructed full height in all CMU walls adjacent to all wall openings, wall intersections including corner and tee intersections, at beam bearing, lintel bearing, basketball goal mounting locations, DLH roof joist bearing locations and column bearing locations. Pilasters are required at these locations even if they are not indicated on the plan sheets. Pilasters shall be 1'-4" in length and reinforced with (2)-#5 bars in each cell unless noted otherwise.

1 ALTERNATE - CANOPY FRAMING PLAN
S6.01 SCALE: 1/2" = 1'-0"

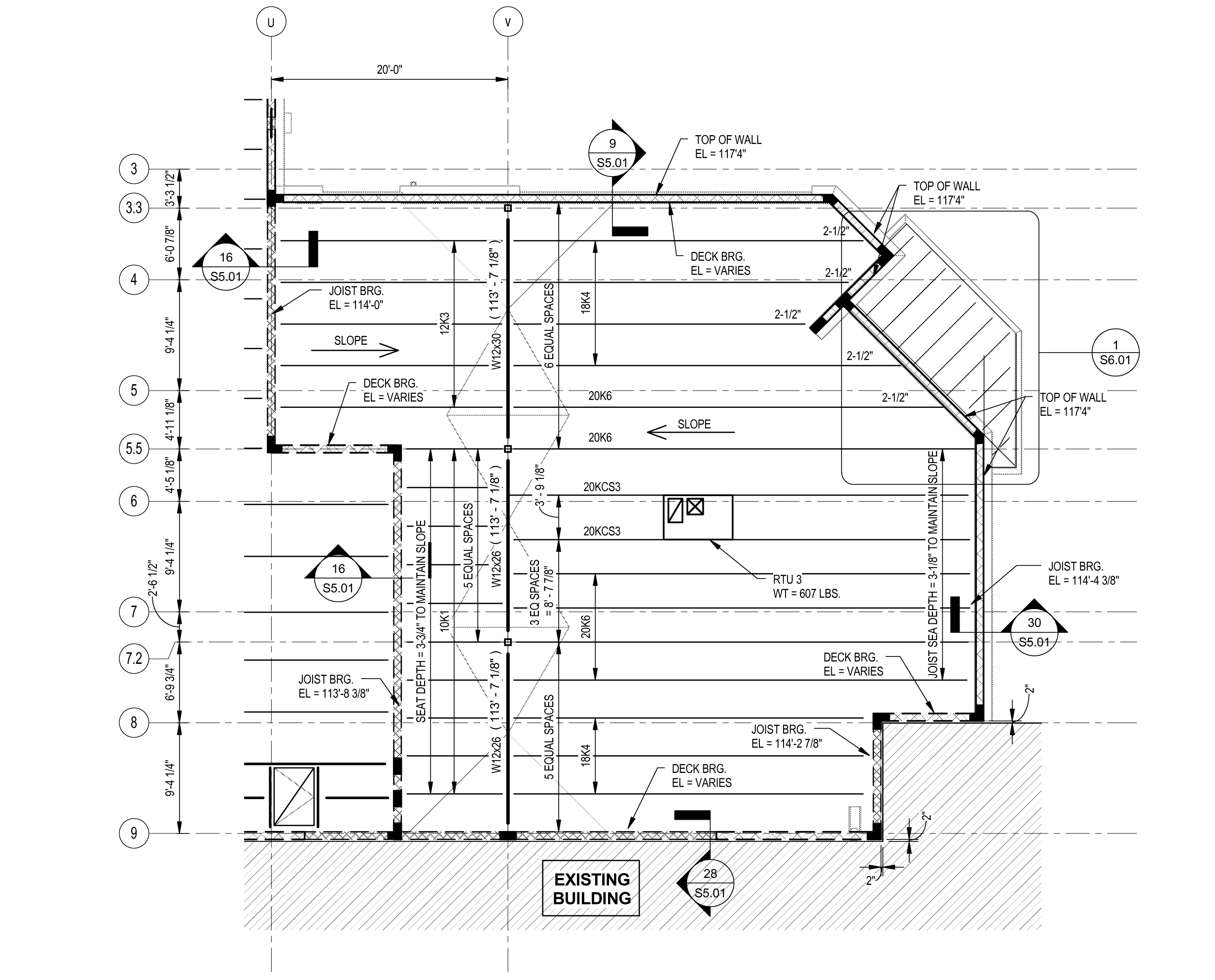


2 TYPICAL DETAIL
S6.01 ALTERNATE FOUNDATION DETAIL



3 TYPICAL DETAIL
S6.01 BRICK SUPPORT OVER LOW ROOF

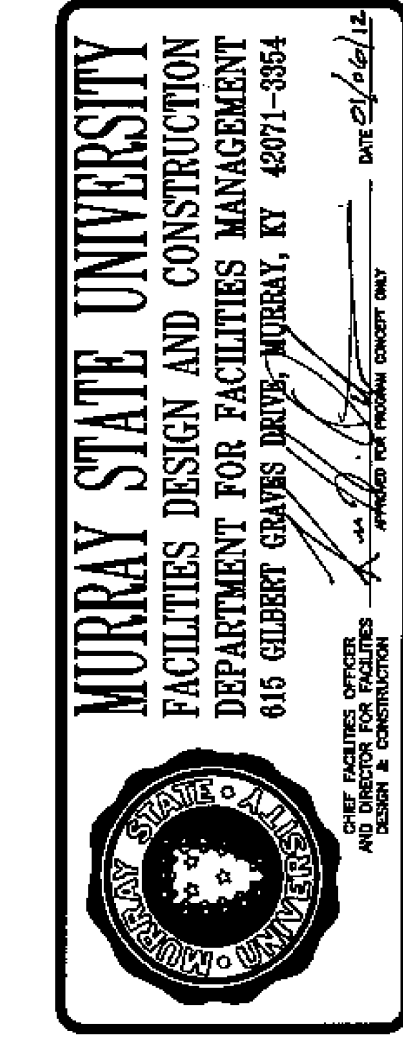
HALL OF FAME ALTERNATE - FOUNDATION PLAN
1/8" = 1'-0"



HALL OF FAME ALTERNATE - ROOF FRAMING PLAN
1/8" = 1'-0"



Hastings+Chivetta
ARCHITECTURE • PLANNING • ENGINEERING
622 Emerson, Suite 200 | Shelton, Missouri 63151 | Tel: 636.371.1717 Fax: 636.371.2823 | www.hastingschivetta.com
MURRAY STATE UNIVERSITY FACILITIES DESIGN AND CONSTRUCTION MANAGEMENT
616 GILBERT GRAYS DRIVE, WÜRTELT, KY 40371-3854
MEP: MARCUM ENGINEERING, LLC, 500 SOUTH 17TH STREET, PADUCAH, KY, 4002



MURRAY STATE UNIVERSITY
SPORTS PRACTICE FACILITY
MURRAY STATE UNIVERSITY
MURRAY, KENTUCKY
BID SET - 2012-01-10



REVISIONS

Date -	1-10-2012
H+C Project No -	11194
FDC Project No -	10-007
BFW Project No -	11194
Marcum Project No -	11557
Sheet Name -	ALTERNATE PLANS & DETAILS



S6.01