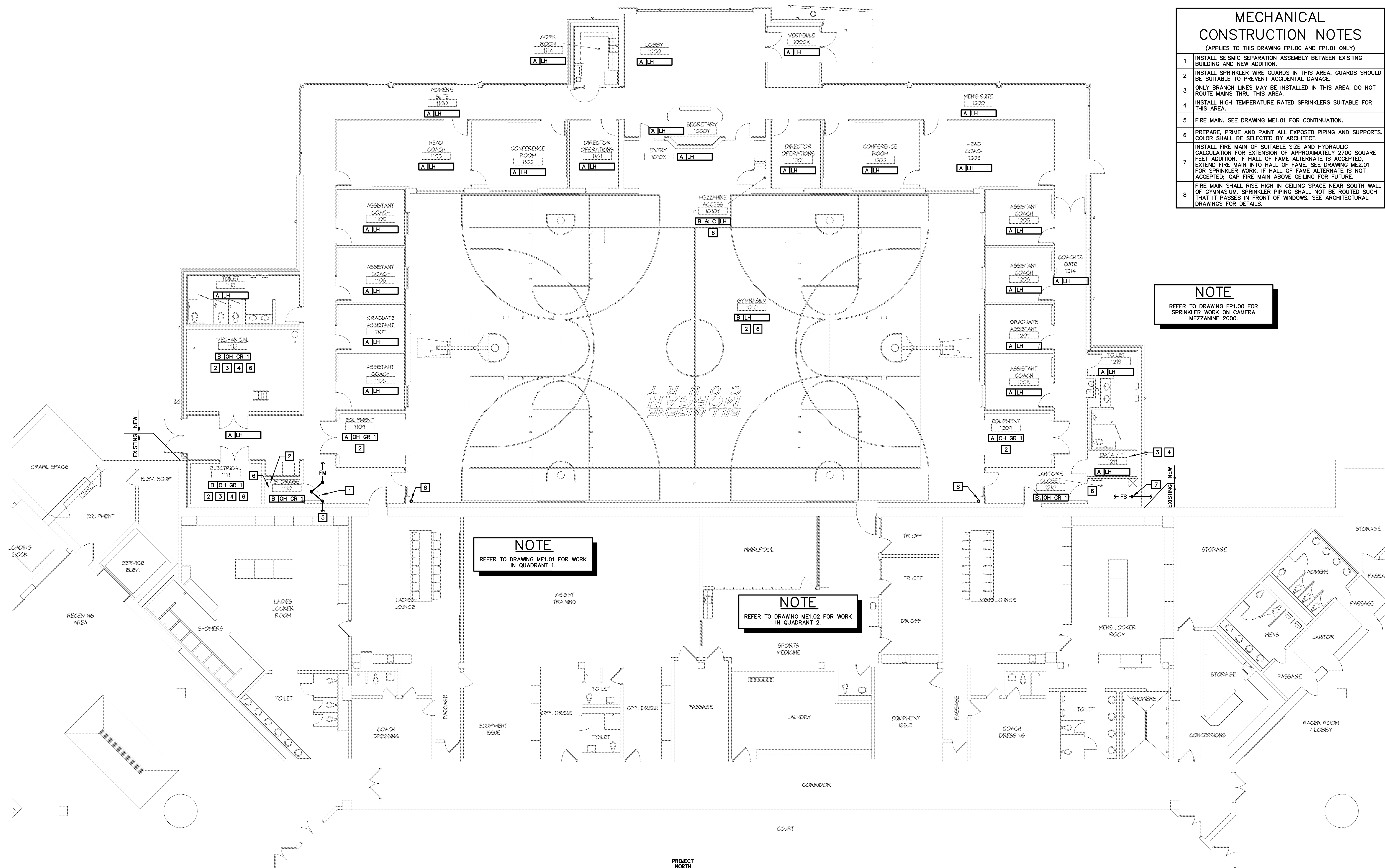


- ### MECHANICAL CONSTRUCTION NOTES
- (APPLIES TO THIS DRAWING FP1.00 AND FP1.01 ONLY)
- 1 INSTALL SEISMIC SEPARATION ASSEMBLY BETWEEN EXISTING BUILDING AND NEW ADDITION.
 - 2 INSTALL SPRINKLER WIRE GUARDS IN THIS AREA. GUARDS SHOULD BE SUITABLE TO PREVENT ACCIDENTAL DAMAGE.
 - 3 ONLY BRANCH LINES MAY BE INSTALLED IN THIS AREA. DO NOT ROUTE MAINS THRU THIS AREA.
 - 4 INSTALL HIGH TEMPERATURE RATED SPRINKLERS SUITABLE FOR THIS AREA.
 - 5 FIRE MAIN. SEE DRAWING ME1.01 FOR CONTINUATION.
 - 6 PREPARE, PRIME AND PAINT ALL EXPOSED PIPING AND SUPPORTS. COLOR SHALL BE SELECTED BY ARCHITECT.
 - 7 INSTALL FIRE MAIN OF SUITABLE SIZE AND HYDRAULIC CALCULATION FOR EXTENSION OF APPROXIMATELY 2700 SQUARE FEET ADDITION. IF HALL OF FAME ALTERNATE IS ACCEPTED, EXTEND FIRE MAIN INTO HALL OF FAME. SEE DRAWING MEZ.01 FOR SPRINKLER WORK. IF HALL OF FAME ALTERNATE IS NOT ACCEPTED, CAP FIRE MAIN ABOVE CEILING FOR FUTURE.
 - 8 FIRE MAIN SHALL RISE HIGH IN CEILING SPACE NEAR SOUTH WALL OF GYMNASIUM. SPRINKLER PIPING SHALL NOT BE ROUTED SUCH THAT IT PASSES IN FRONT OF WINDOWS. SEE ARCHITECTURAL DRAWINGS FOR DETAILS.

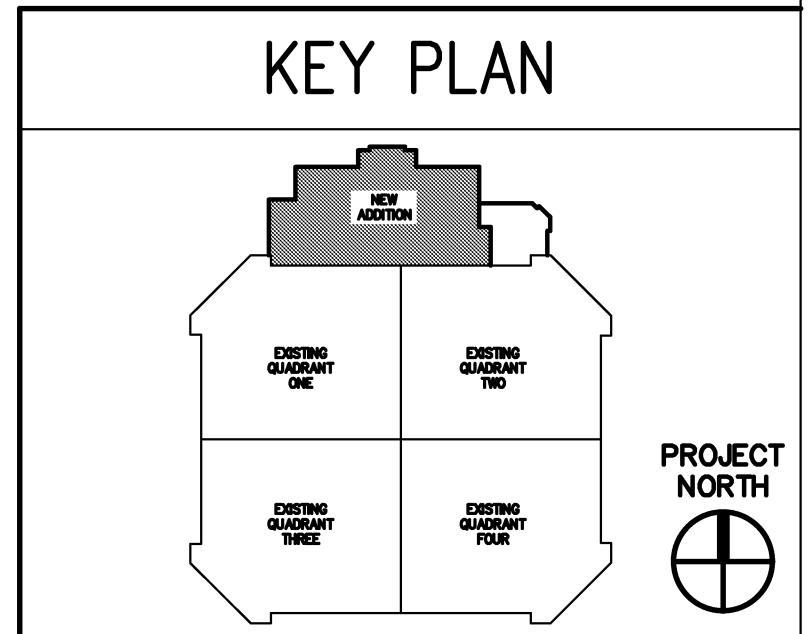
NOTE
 REFER TO DRAWING FP1.00 FOR SPRINKLER WORK ON CAMERA MEZZANINE 2000.

NOTE
 REFER TO DRAWING ME1.01 FOR WORK IN QUADRANT 1.

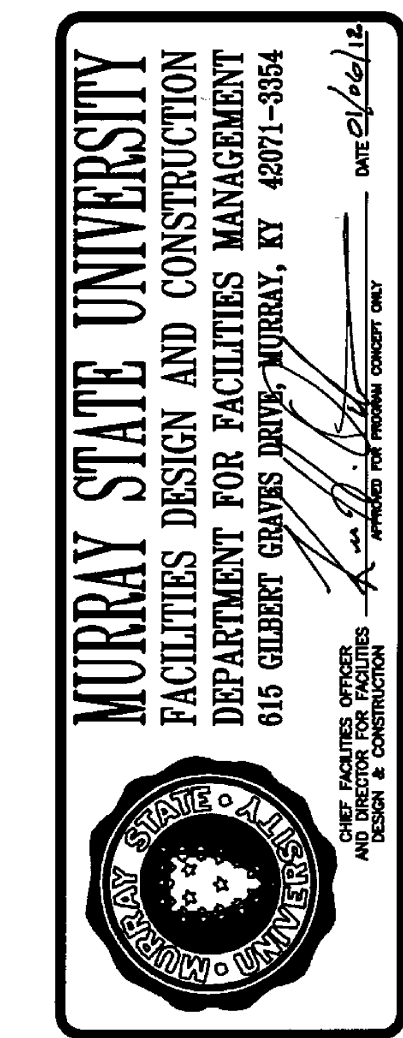
NOTE
 REFER TO DRAWING ME1.02 FOR WORK IN QUADRANT 2.



PROJECT NORTH
FLOOR PLAN
 SCALE: 1/8" = 1'-0"



Hastings+Chivetta
 ARCHITECTURE • PLANNING • ENGINEERING
 622 Emerson, Suite 200 | St. Louis, MO 63101 | Tel: 314.863.2771 | Fax: 314.863.2823 | www.hastingschivetta.com
 CIVIL BACON, FARMER, WORMAN ENGINEERING & TESTING, INC., 1242 DUGLID DRIVE, MURRAY, KENTUCKY 42071
 622 Emerson, Suite 200 | St. Louis, MO 63101 | Tel: 314.863.2771 | Fax: 314.863.2823 | www.hastingschivetta.com
 MURRAY STATE UNIVERSITY
 DEPARTMENT FOR FACILITIES MANAGEMENT
 615 GIBBERT DRIVE, MURRAY, KY 42071-3384
 MPE: MARCUM ENGINEERING, LLC, 500 SOUTH 17TH STREET, PADUCAH, KENTUCKY, 42002



SPORTS PRACTICE FACILITY
MURRAY STATE UNIVERSITY
 MURRAY, KENTUCKY
 BID SET - 2012-01-04



REVISIONS

Date -	2012-01-04
H+C Project No -	2983.00
FDC Project No -	10-007
BFW Project No -	11194
Marcum Project No -	11557
Sheet Name -	FIRE PROTECTION PLAN