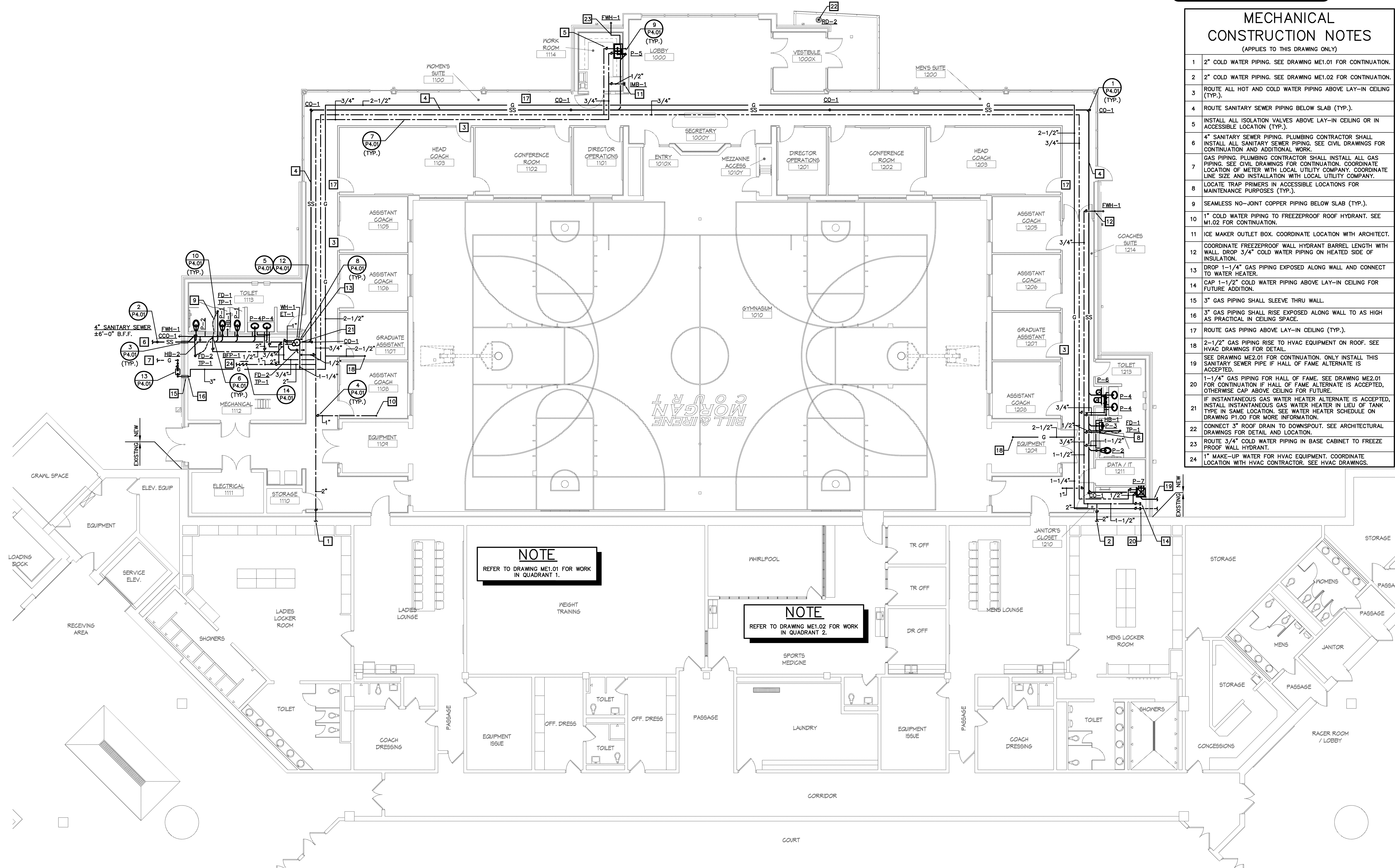


- ### MECHANICAL CONSTRUCTION NOTES
- (APPLIES TO THIS DRAWING ONLY)
- 2" COLD WATER PIPING. SEE DRAWING ME1.01 FOR CONTINUATION.
 - 2" COLD WATER PIPING. SEE DRAWING ME1.02 FOR CONTINUATION.
 - ROUTE ALL HOT AND COLD WATER PIPING ABOVE LAY-IN CEILING (TYP.).
 - ROUTE SANITARY SEWER PIPING BELOW SLAB (TYP.).
 - INSTALL ALL ISOLATION VALVES ABOVE LAY-IN CEILING OR IN ACCESSIBLE LOCATION (TYP.).
 - 4" SANITARY SEWER PIPING. PLUMBING CONTRACTOR SHALL INSTALL ALL SANITARY SEWER PIPING. SEE CIVIL DRAWINGS FOR CONTINUATION AND ADDITIONAL WORK.
 - GAS PIPING. PLUMBING CONTRACTOR SHALL INSTALL ALL GAS PIPING. SEE CIVIL DRAWINGS FOR CONTINUATION. COORDINATE LOCATION OF METER WITH LOCAL UTILITY COMPANY. COORDINATE LINE SIZE AND INSTALLATION WITH LOCAL UTILITY COMPANY.
 - LOCATE TRAP PRIMERS IN ACCESSIBLE LOCATIONS FOR MAINTENANCE PURPOSES (TYP.).
 - SEAMLESS NO-JOINT COPPER PIPING BELOW SLAB (TYP.).
 - 1" COLD WATER PIPING TO FREEZEPROOF ROOF HYDRANT. SEE ME1.02 FOR CONTINUATION.
 - ICE MAKER OUTLET BOX. COORDINATE LOCATION WITH ARCHITECT.
 - COORDINATE FREEZEPROOF WALL HYDRANT BARREL LENGTH WITH WALL. DROP 3/4" COLD WATER PIPING ON HEATED SIDE OF INSULATION.
 - DROP 1-1/4" GAS PIPING EXPOSED ALONG WALL AND CONNECT TO WATER HEATER.
 - CAP 1-1/2" COLD WATER PIPING ABOVE LAY-IN CEILING FOR FUTURE ADDITION.
 - 3" GAS PIPING SHALL SLEEVE THRU WALL.
 - 3" GAS PIPING SHALL RISE EXPOSED ALONG WALL TO AS HIGH AS PRACTICAL IN CEILING SPACE.
 - ROUTE GAS PIPING ABOVE LAY-IN CEILING (TYP.).
 - 2-1/2" GAS PIPING RISE TO HVAC EQUIPMENT ON ROOF. SEE HVAC DRAWINGS FOR DETAIL.
 - SEE DRAWING ME2.01 FOR CONTINUATION. ONLY INSTALL THIS SANITARY SEWER PIPE IF HALL OF FAME ALTERNATE IS ACCEPTED.
 - 1-1/4" GAS PIPING FOR HALL OF FAME. SEE DRAWING ME2.01 FOR CONTINUATION IF HALL OF FAME ALTERNATE IS ACCEPTED, OTHERWISE CAP ABOVE CEILING FOR FUTURE.
 - IF INSTANTANEOUS GAS WATER HEATER ALTERNATE IS ACCEPTED, INSTALL INSTANTANEOUS GAS WATER HEATER IN LIEU OF TANK TYPE IN SAME LOCATION. SEE WATER HEATER SCHEDULE ON DRAWING P1.00 FOR MORE INFORMATION.
 - CONNECT 3" ROOF DRAIN TO DOWNSPOUT. SEE ARCHITECTURAL DRAWINGS FOR DETAIL AND LOCATION.
 - ROUTE 3/4" COLD WATER PIPING IN BASE CABINET TO FREEZE PROOF WALL HYDRANT.
 - 1" MAKE-UP WATER FOR HVAC EQUIPMENT. COORDINATE LOCATION WITH HVAC CONTRACTOR. SEE HVAC DRAWINGS.

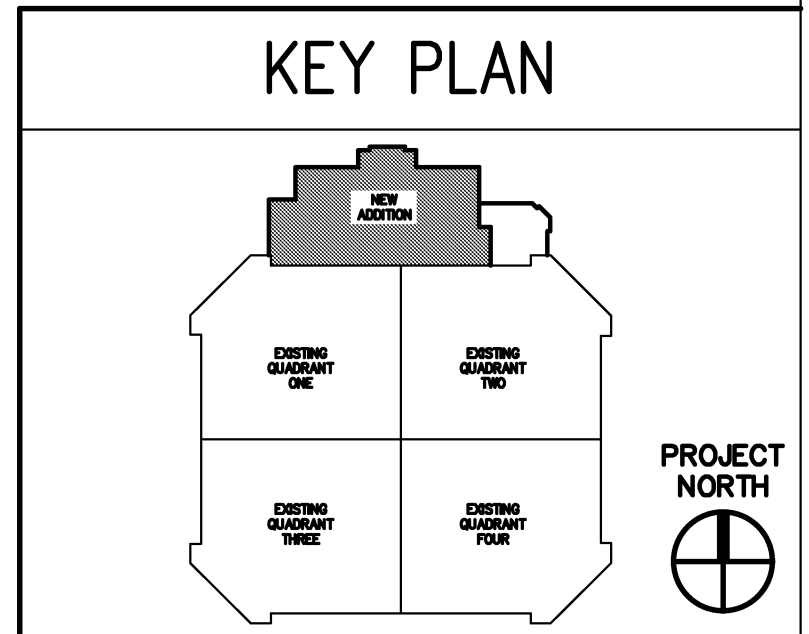
A
B
C
D
E
F



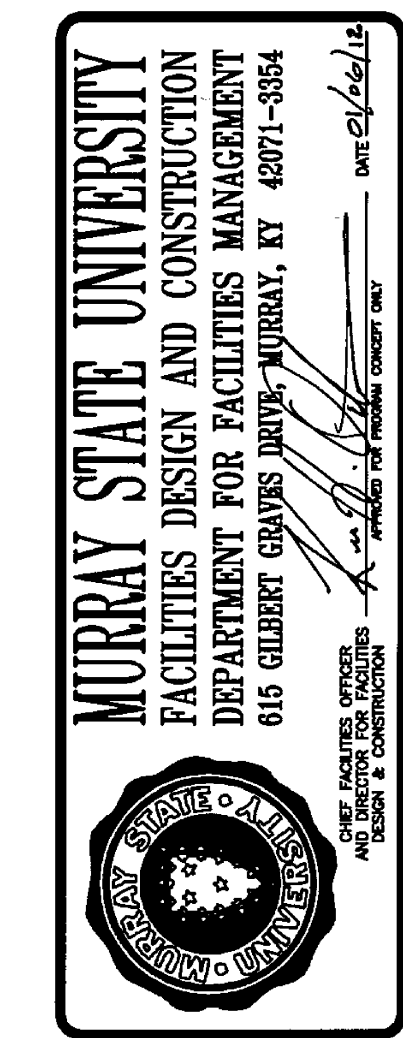
NOTE
REFER TO DRAWING ME1.01 FOR WORK IN QUADRANT 1.

NOTE
REFER TO DRAWING ME1.02 FOR WORK IN QUADRANT 2.

FLOOR PLAN
SCALE: 1/8" = 1'-0"



Hastings+Chivetta
 ARCHITECTURE • PLANNING • ENGINEERING
 622 Emerson, Suite 200 | Santa Louis, Missouri 63101 | Tel: 314.883.2171 | Fax: 314.883.2033 | www.hastingschivetta.com
 CIVIL BACON, FARMER, WOODMAN ENGINEERING & TESTING, INC., 1242 DUGLID DRIVE, MURRAY, KENTUCKY 42071
 403 S. GIBBERT DRIVE, MURRAY, KY 42071
 MPE: MARCUM ENGINEERING, LLC, 500 SOUTH 17TH STREET, PADUCAH, KENTUCKY, 42002



SPORTS PRACTICE FACILITY
MURRAY STATE UNIVERSITY
 MURRAY, KENTUCKY
 BID SET - 2012-01-04



REVISIONS

Date -	2012-01-04
H+C Project No -	2983.00
FDC Project No -	10-007
BFW Project No -	11194
Marcum Project No -	11557
Sheet Name -	PLUMBING PLAN