

A

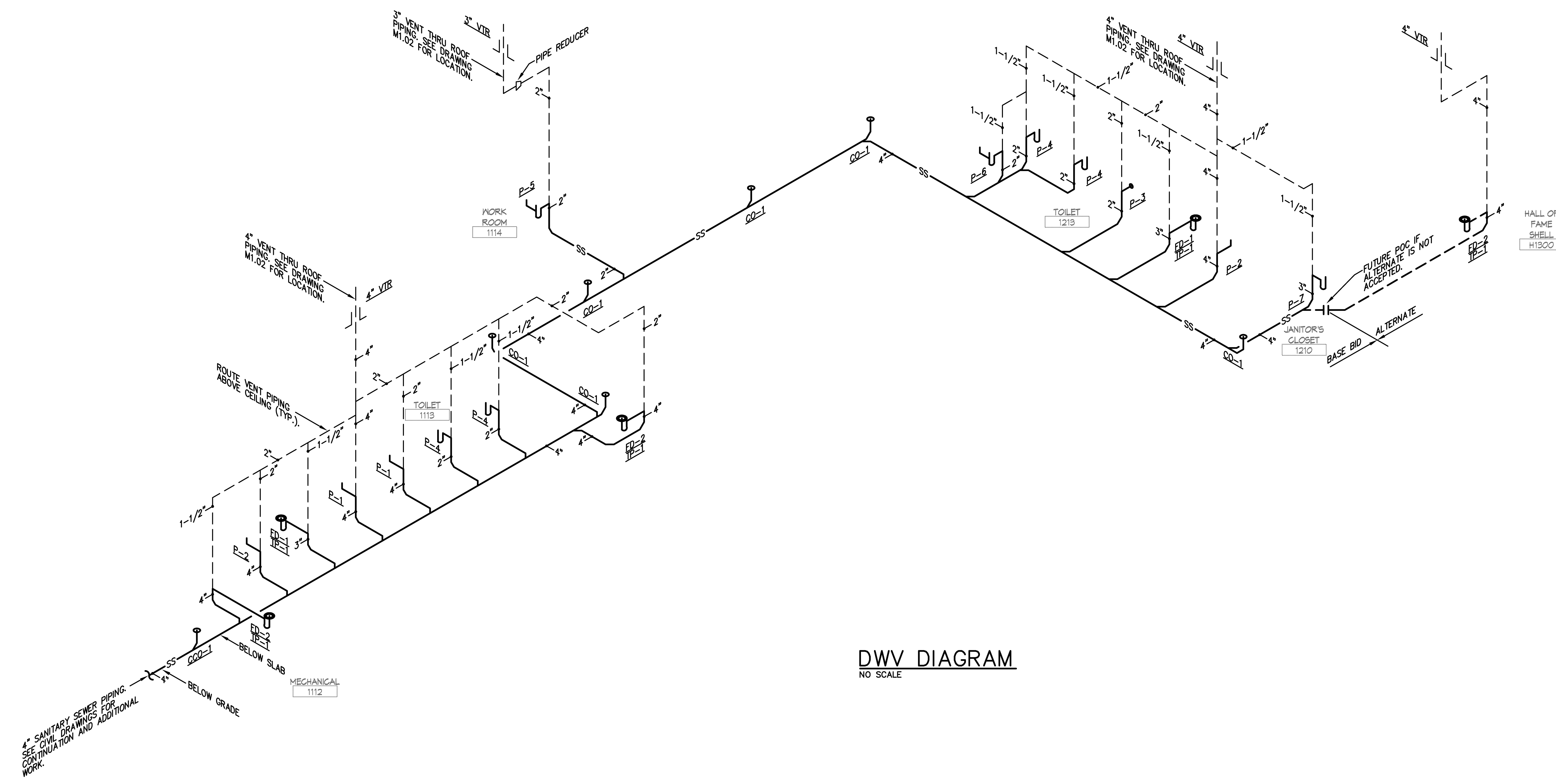
B

C

D

E

F



DWV DIAGRAM
NO SCALE

Hastings+Chivetta
 ARCHITECTURE • PLANNING • ENGINEERING
 CIVIL BACON, FARMER, WOODMAN ENGINEERING & TESTING, INC., 1216 DUGLID DRIVE, MURRAY, KENTUCKY 42071
 622 Emerson, Suite 2001, St. Louis, Missouri 63141 | Tel: 314.483.2771 | Fax: 314.483.2823 | www.hastingschivetta.com
 SHYRLEY L. GARDNER, P.E., 1001 S. MAIN ST., MARION, ILLINOIS 62869
 IPE: MARCUM ENGINEERING, LLC, 500 SOUTH 17TH STREET, PADUCAH, KENTUCKY, 42002

MURRAY STATE UNIVERSITY
 FACILITIES DESIGN AND CONSTRUCTION
 DEPARTMENT FOR FACILITIES MANAGEMENT
 616 GIBBERT DRIVE, MURRAY, KY 42071-3384
 MURRAY STATE UNIVERSITY
 FACILITIES OFFICE
 616 GIBBERT DRIVE, MURRAY, KY 42071-3384
 DATE: 2012-01-04
 TIME: 10:00 AM

SPORTS PRACTICE FACILITY
MURRAY STATE UNIVERSITY
 MURRAY, KENTUCKY
 BID SET - 2012-01-04

MURRAY STATE UNIVERSITY

REVISIONS

Date -	2012-01-04
H+C Project No -	2983.00
FDC Project No -	10-007
BFW Project No -	11194
Marcum Project No -	11557
Sheet Name -	PLUMBING DWV DIAGRAM

P3.01