

MECHANICAL CONSTRUCTION NOTES

(APPLIES TO THIS DRAWING ONLY)

- INSTALL 4" SANITARY SEWER PIPING DEEP BELOW SLAB FOR FUTURE PLUMBING IN HALL OF FAME.
- SEE DRAWING P1.01 FOR CONTINUATION.
- CONNECT 1/2" COLD WATER PIPING TO EXISTING 3/4" COLD WATER PIPING ABOVE PASSAGE 137 CEILING SPACE. FIELD VERIFY LOCATION.
- CONTRACTOR SHALL REMOVE EXISTING CEILING TILES AND/OR GRID AS NEEDED TO PERFORM WORK. CONTRACTOR SHALL RE-INSTALL CEILING WHEN WORK IS COMPLETE.
- SEAMLESS NO-JOINT COPPER PIPING BELOW SLAB (TYP.).
- ROUTE COLD WATER PIPING ABOVE CEILING (TYP.).
- INSTALL ALL ISOLATION VALVES ABOVE LAY-IN CEILING OR IN ACCESSIBLE LOCATION (TYP.).
- LOCATE TRAP PRIMER IN ACCESSIBLE LOCATION FOR MAINTENANCE PURPOSES (TYP.).
- 8" STORM DRAIN PIPING SHALL DROP EXPOSED ALONG WALL TO BELOW SLAB.
- ROUTE STORM DRAIN AND OVERFLOW STORM DRAIN PIPING AS HIGH AS POSSIBLE, MAINTAINING PROPER SLOPE, IN CEILING SPACE (TYP.).
- 12" STORM DRAIN PIPING. SEE CIVIL DRAWINGS FOR CONTINUATION.
- OVERFLOW STORM DRAIN DOWNSPOUT. SEE ARCHITECTURAL DRAWINGS FOR LOCATION.
- SEE ARCHITECTURAL DRAWINGS FOR ROOF DRAIN AND OVERFLOW STORM DRAIN LOCATIONS.
- CONNECT ROOF DRAIN TO DOWNSPOUT. COORDINATE LOCATION WITH ARCHITECT.
- 1-1/4" GAS PIPING. SEE DRAWING P1.01 FOR CONTINUATION.
- ROUTE GAS PIPING AS HIGH AS POSSIBLE IN CEILING SPACE. PREPARE, PRIME AND PAINT ALL EXPOSED PIPING AND SUPPORTS. COLOR SHALL BE SELECTED BY ARCHITECT.
- 1-1/4" GAS PIPING RISE TO HVAC EQUIPMENT ON ROOF.
- FIRE MAIN. SEE DRAWING FP1.01 FOR CONTINUATION.
- SEE DETAIL ON M4.01 FOR DUCTWORK ORIENTATION.
- MECHANICAL SCREENING. SEE SPECIFICATIONS.

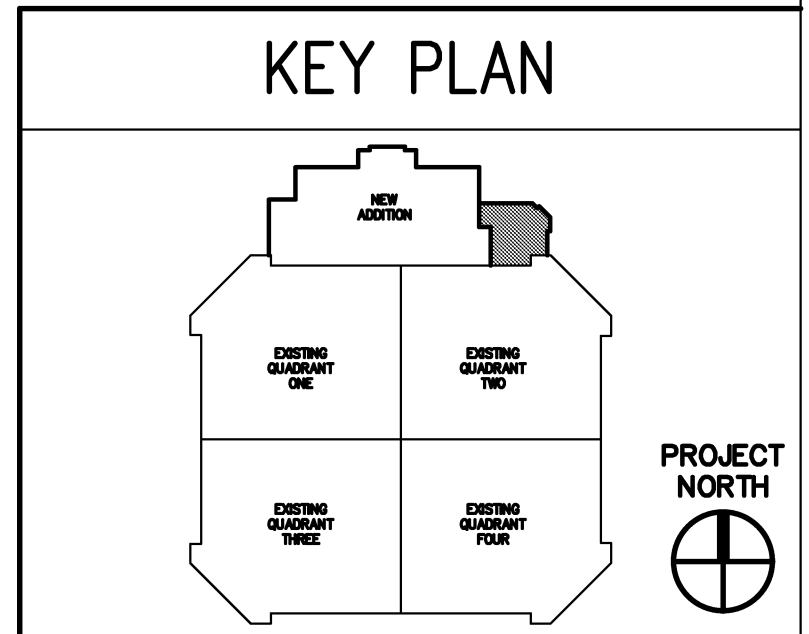
ELECTRICAL CONSTRUCTION NOTES

(APPLIES TO THIS DRAWING ONLY)

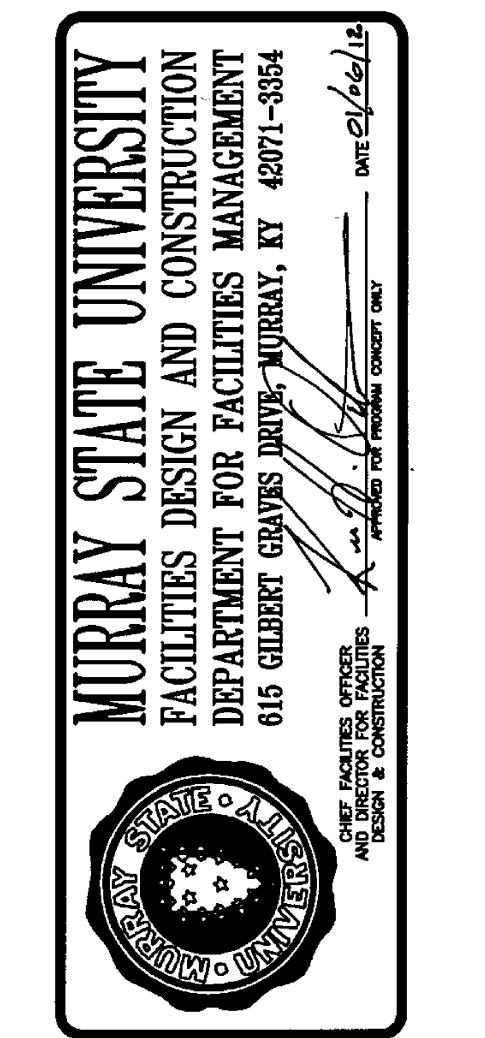
- LIGHTING CIRCUITS INDICATED SHALL BE CONTROLLED THROUGH PANEL L CONTROLS. REFER TO DRAWING E4.02.
- CONTRACTOR SHALL FURNISH AND INSTALL ONE (1) 2" CONDUIT WITH PULL STRING FOR FUTURE BUILDING EXPANSION. REFERENCE DRAWING E1.01.
- CONTRACTOR SHALL FURNISH AND INSTALL TWO (2) 4" CONDUIT WITH PULL STRING FOR FUTURE BUILDING EXPANSION. REFERENCE DRAWING E1.02.
- JUNCTION BOX IN DOOR HEADER - CONTRACTOR SHALL FURNISH AND INSTALL 1/2" FROM DOOR HEADER TO CEILING SPACE FOR PROXIMITY SWITCHES - SEE ARCHITECTURAL HARDWARE PACKAGE.
- CONTRACTOR SHALL ROUGH-IN FOR FUTURE CARD READER AND DOOR ACTUATOR. CONTRACTOR SHALL COORDINATE LOCATION WITH ARCHITECT AND VERIFY IN THE FIELD.
- CONTRACTOR SHALL FURNISH AND INSTALL RED SWITCH FOR B(E) LIGHT FIXTURES.
- SEE DRAWING U1.01 ELECTRICAL CONSTRUCTION NOTE #6.
- SEE DRAWING U1.01 ELECTRICAL CONSTRUCTION NOTE #7.

MPE PENETRATION NOTE
 FOR ALL EXISTING WALL PENETRATIONS: CORE DRILL EXISTING CMU/CONCRETE WALL AND COMPLETE PENETRATION WITH APPROPRIATE UL LISTED FIRE STOP.

PROJECT NORTH
ENLARGED FLOOR PLAN - ALTERNATE
 SCALE: 1/4" = 1'-0"



Hastings+Chivetta
 ARCHITECTURE • PLANNING • ENGINEERING
 CIVIL BACCHUS L. OLIVER, LICENSED PROFESSIONAL ENGINEER, STATE OF KENTUCKY, LICENSE NO. 18897
 622 E. MAIN ST., PADUCAH, KY 40363
 PHONE: 270.444.9274 FAX: 270.443.1904
 WWW.HASTINGSCHIVETTA.COM



SPORTS PRACTICE FACILITY
 MURRAY STATE UNIVERSITY
 MURRAY, KENTUCKY
 BID SET - 2012-01-04

MURRAY STATE UNIVERSITY

REVISIONS

Date	2012-01-04
H+C Project No	2983.00
FDC Project No	10-007
BFW Project No	11194
Marcum Project No	11557
Sheet Name	MECH - ELEC ENLARGED PLAN - ALTERNATE

ME2.01