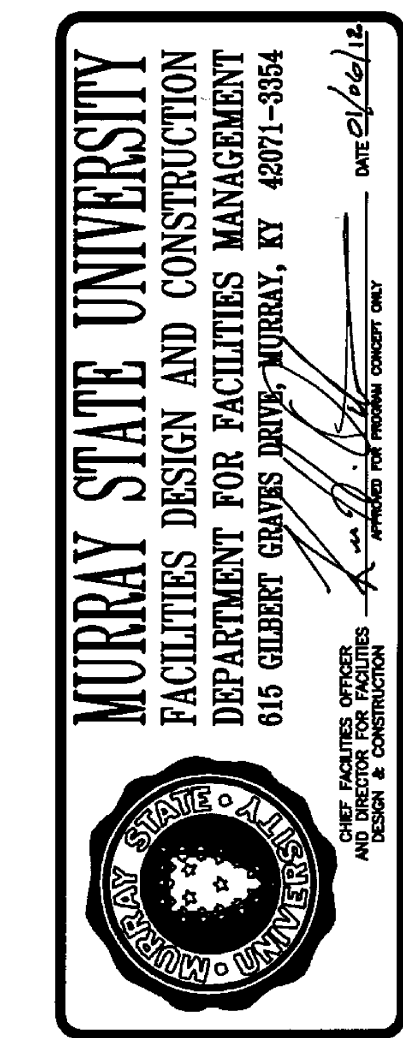


ELECTRICAL CONSTRUCTION NOTES (APPLIES TO THIS DRAWING ONLY)	
1	LOCATE RECEPTACLE AND JUNCTION BOX 17'-0" A.F.F.
2	CONTRACTOR SHALL FURNISH, INSTALL AND CONNECT JUNCTION BOX, CONDUIT AND WIRE FROM SCOREBOARDS TO CONTROL STATION LOCATED ADJACENT TO SIDE OF CENTER COURT. COORDINATE INSTALLATION WITH SCOREBOARD MANUFACTURER INSTALLATION INSTRUCTIONS. SEE DRAWING E1.02.
3	CONTRACTOR SHALL COORDINATE INSTALLATION OF CONDUIT IN SHEAR WALLS WITH OTHER TRADES. CONTRACTOR SHALL MINIMIZE THE QUANTITY OF EXPOSED CONDUITS IN THE GYM AREA.
4	CONTRACTOR SHALL FURNISH AND INSTALL 3" CONDUIT IN SHEAR WALLS WITH PULL STRING TO DESIGNATED JUNCTION BOXES AND COVER (FOR MOTORIZED BLINDS). CONTRACTOR SHALL FURNISH AND INSTALL PULL BOXES AS REQUIRED. FOR CONTINUATION SEE DRAWING E1.02.
5	FOR CONTINUATION SEE DRAWING E1.02.
6	CONTRACTOR SHALL FURNISH AND INSTALL 1" CONDUIT IN SHEAR WALL WITH PULL STRING TO DESIGNATED JUNCTION BOX AND COVER (FOR MOTORIZED CURTAIN). CONTRACTOR SHALL FURNISH AND INSTALL PULL BOXES AS REQUIRED. FOR CONTINUATION SEE DRAWING E1.02.

Hastings+Chivetta
 ARCHITECTURE • PLANNING • ENGINEERING
 CIVIL BACON, FARMER, WORMAN ENGINEERING & TESTING, INC. 1216 DULGIDD DRIVE, MURRAY, KENTUCKY 42071
 622 Emerson, Suite 201 | Sparks, Louisville, Missouri 63341 | Tel: 314.883.2171 | Fax: 314.883.2823 | www.hastingschivetta.com
 SHYRLEY L. GIBERT, P.E. & JAMES W. MURPHY, P.E. 1010 S. MAIN ST., MURRAY, ILLINOIS 62869
 IPE: MURRAY STATE UNIVERSITY, L.L.C. 500 SOUTH 17TH STREET, PADUCAH, KENTUCKY, 42002

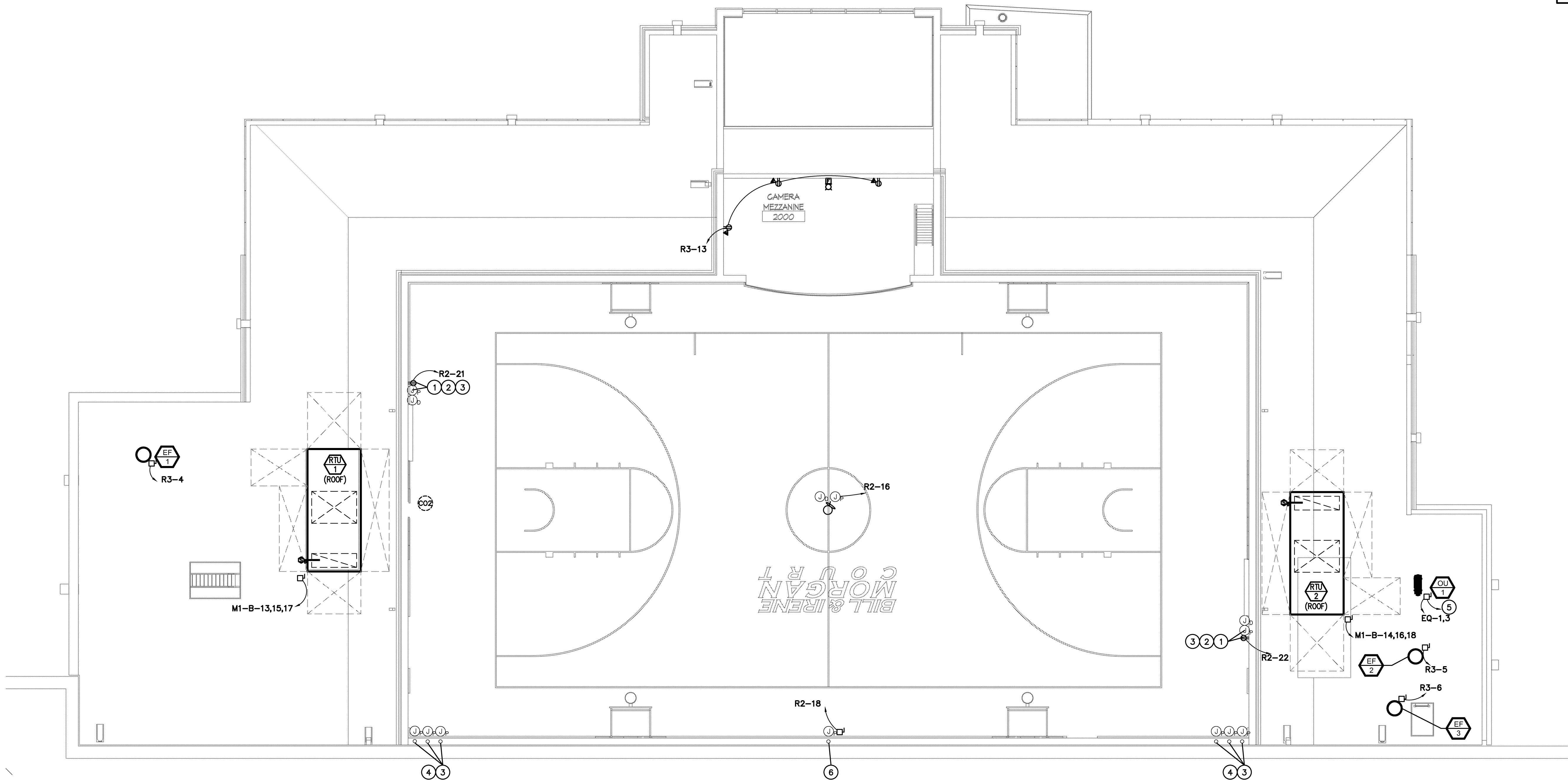


SPORTS PRACTICE FACILITY
MURRAY STATE UNIVERSITY
 MURRAY, KENTUCKY
 BID SET - 2012-01-04



REVISIONS

Date -	2012-01-04
H+C Project No -	2983.00
FDC Project No -	10-007
BFW Project No -	11194
Marcum Project No -	11557
Sheet Name -	ELECTRICAL UPPER GYMNASIUM POWER AND SPECIAL SYSTEMS PLAN



PROJECT NORTH
UPPER GYMNASIUM PLAN
 SCALE: 1/8" = 1'-0"

