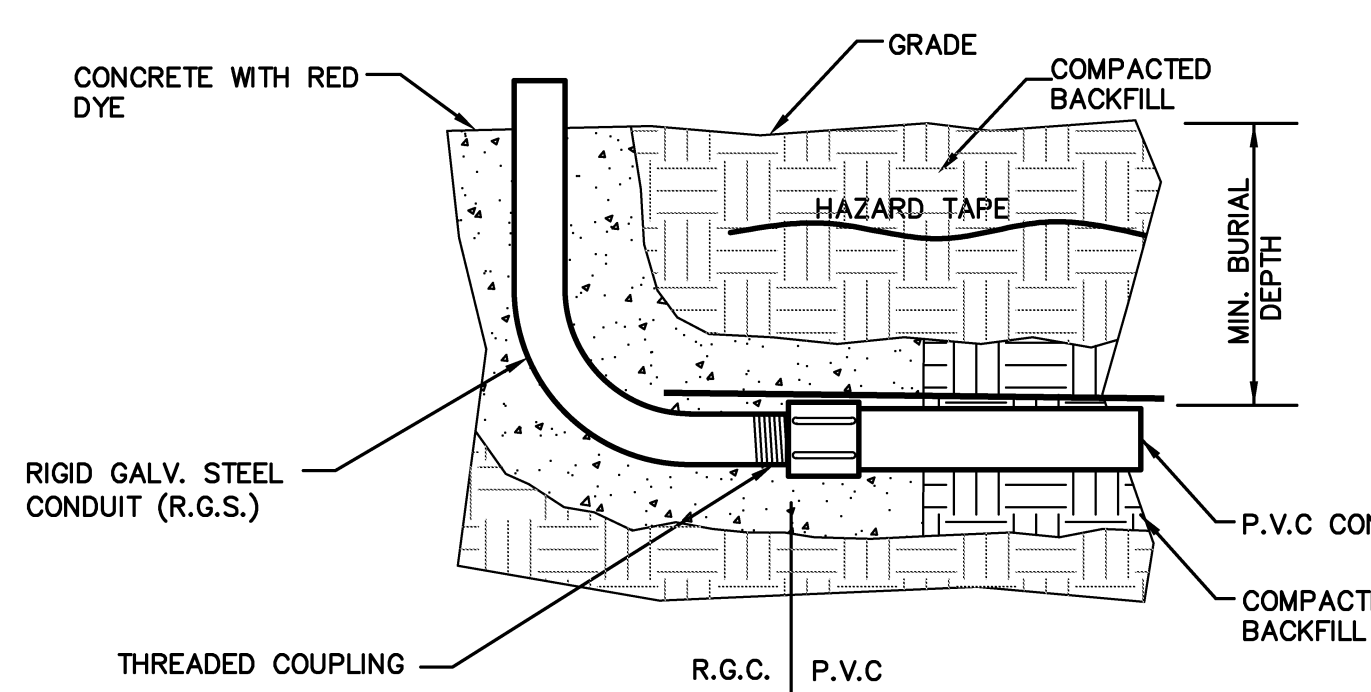


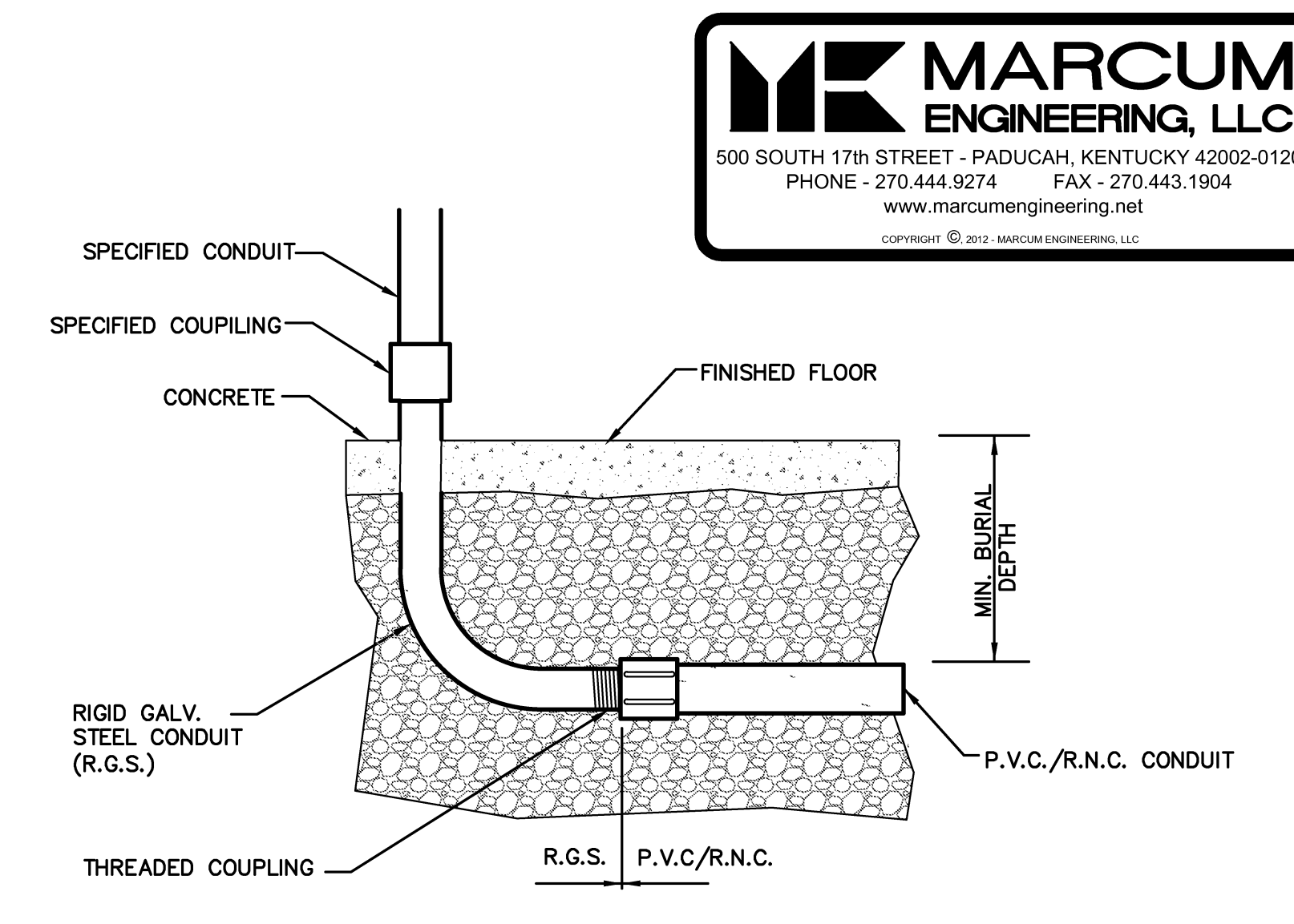
LIGHT POLE BASE DETAIL

NO SCALE



OUTSIDE CONDUIT TRANSITION

NO SCALE

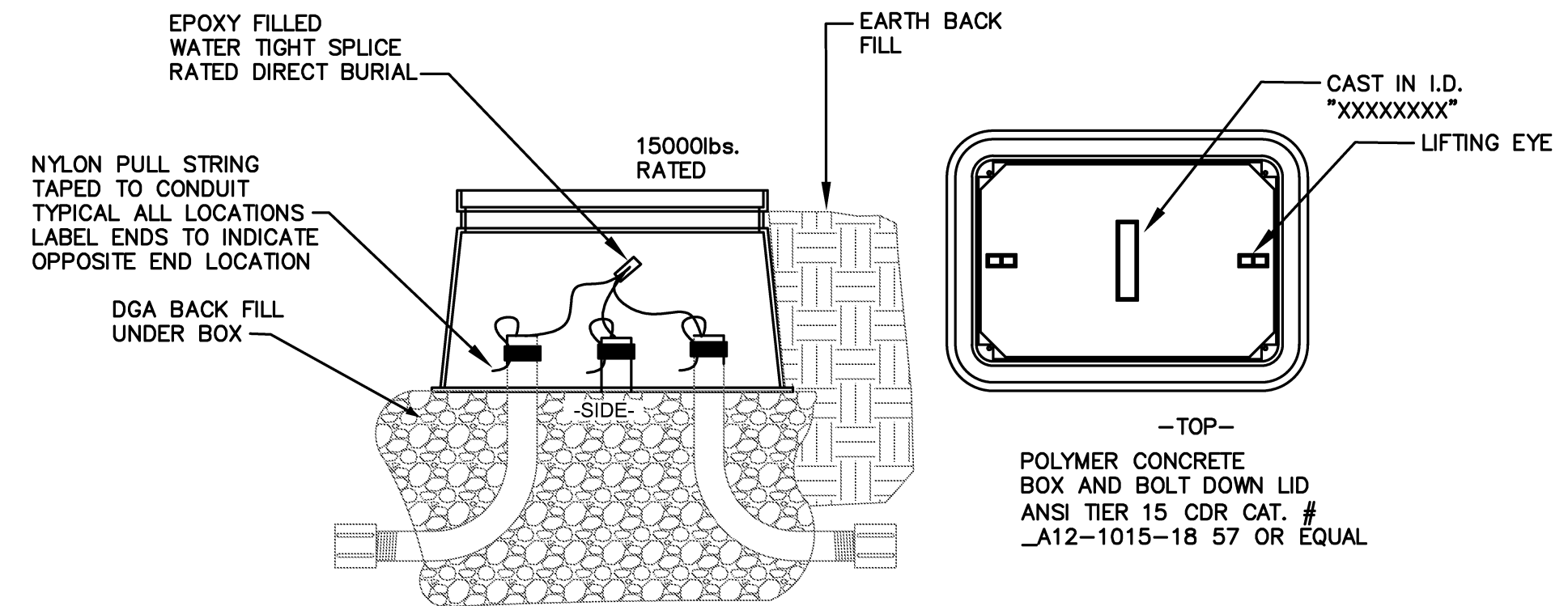


CONDUIT TRANSITION UNDER SLAB

NO SCALE

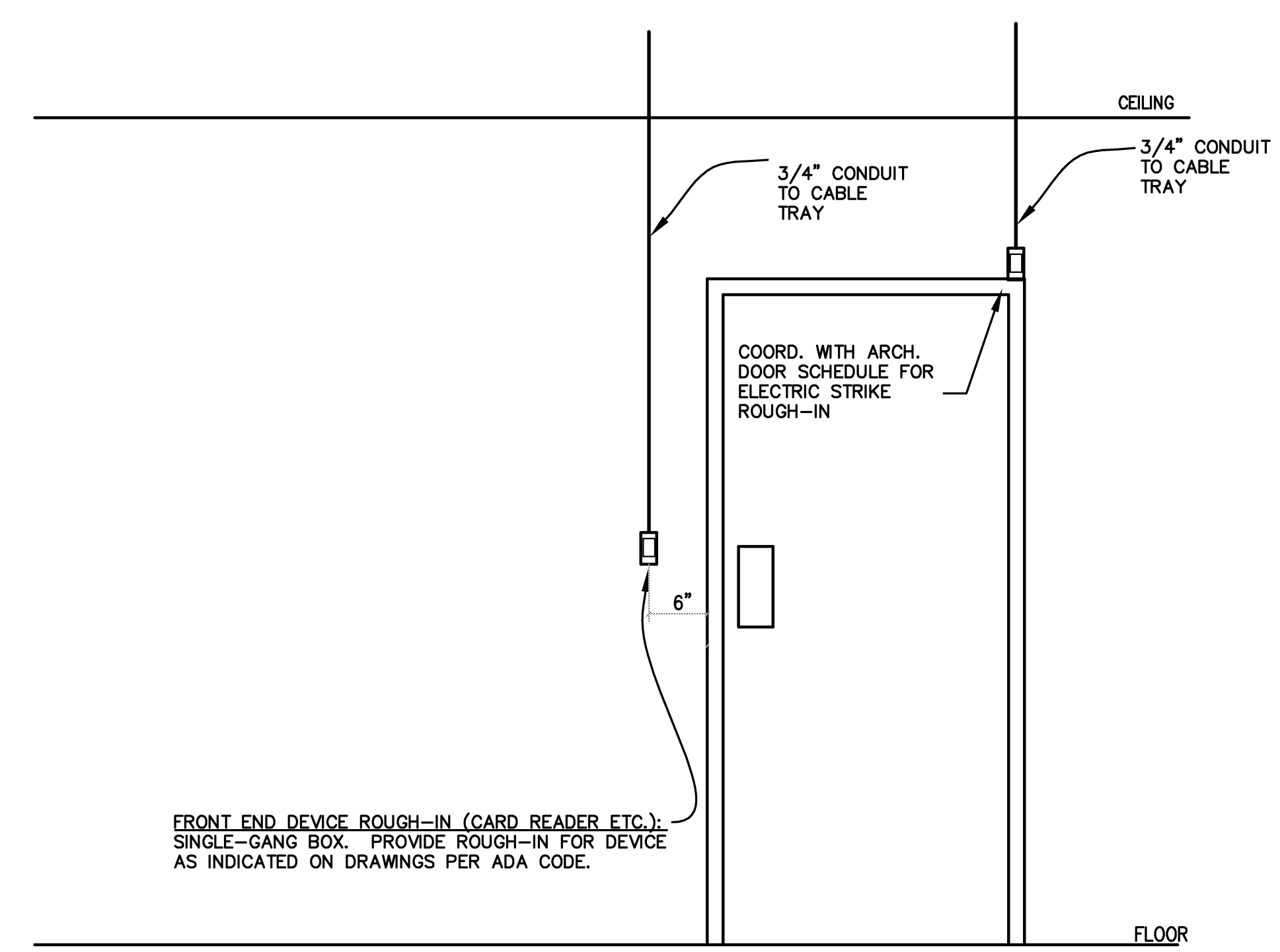


NOTE:
APPLIES TO ALL INTERIOR CONDUITS FROM BELOW SLAB OF BUILDING ON GRADE AND FEEDER CONDUITS.



PULL BOX DETAIL

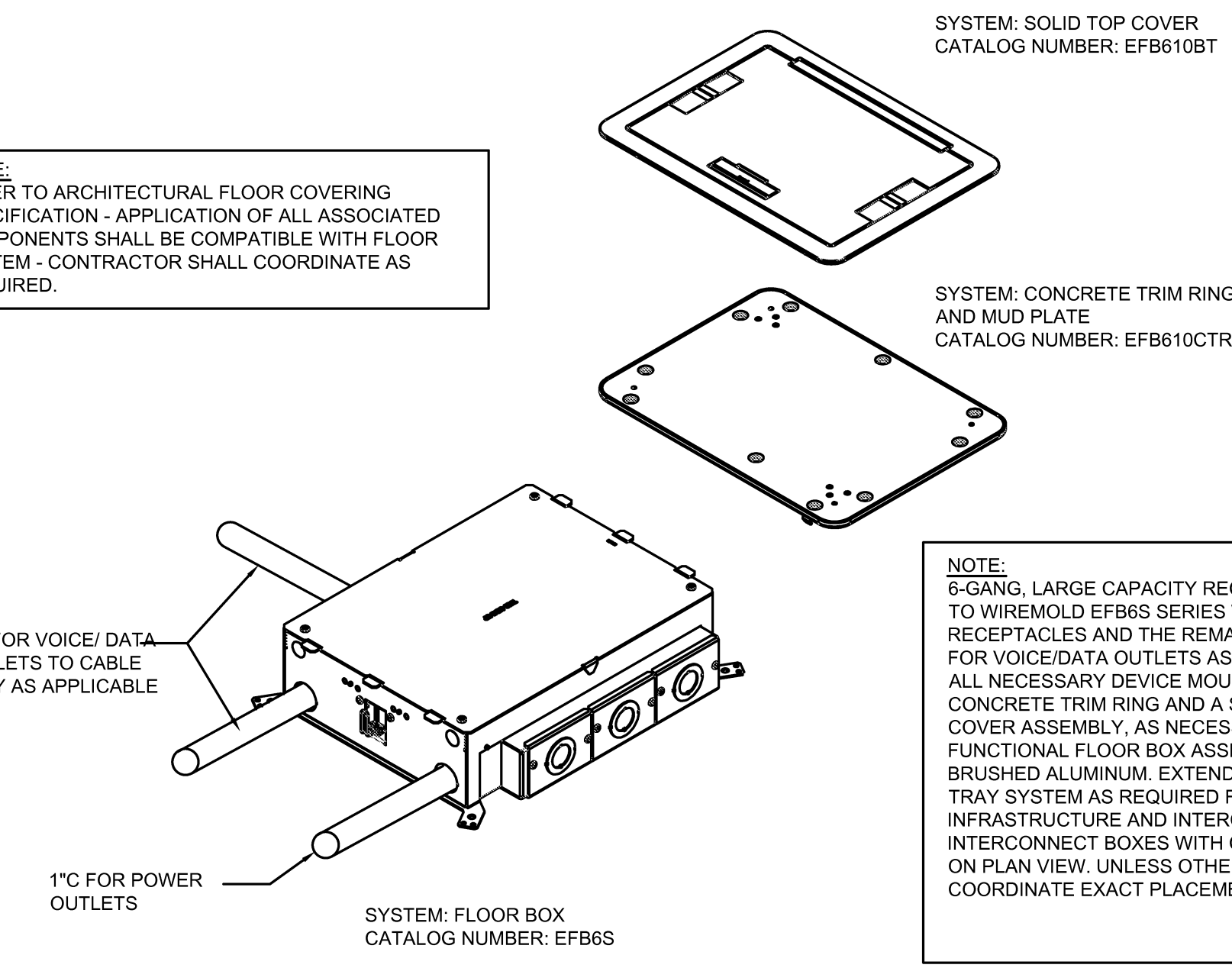
NO SCALE



CARD READER ROUGH-IN

NO SCALE

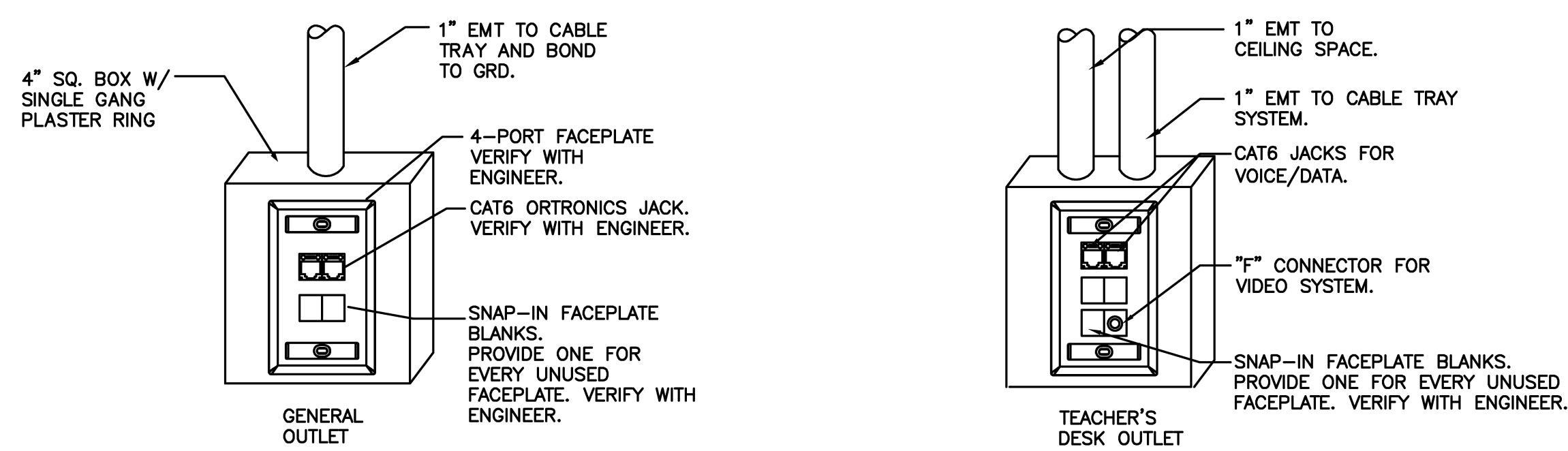
NOTE:
REFER TO ARCHITECTURAL FLOOR COVERING SPECIFICATION - APPLICATION OF ALL ASSOCIATED COMPONENTS SHALL BE COMPATIBLE WITH FLOOR SYSTEM - CONTRACTOR SHALL COORDINATE AS REQUIRED.



6-GANG FLUSH FLOOR BOX DETAIL

NO SCALE

NOTE:
6-GANG, LARGE CAPACITY RECESSED FLOORBOX EQUAL TO WIREMOLD EFB6S SERIES WITH (3) 120V, 20A DUPLEX RECEPTACLES AND THE REMAINDER SHALL BE USED FOR VOICE/DATA OUTLETS AS NOTED ON PLAN. FURNISH ALL NECESSARY DEVICE MOUNTING BRACKETS/PLATES, CONCRETE TRIM RING AND A SOLID CAST ALUMINUM COVER ASSEMBLY, AS NECESSARY FOR A COMPLETE FUNCTIONAL FLOOR BOX ASSEMBLY - FINISH SHALL BE BRUSHED ALUMINUM. EXTEND 1" CONDUITS TO CABLE TRAY SYSTEM AS REQUIRED FOR CABLING INFRASTRUCTURE AND INTERCONNECTIONS - INTERCONNECT BOXES WITH CONDUITS AS INDICATED ON PLAN VIEW. UNLESS OTHERWISE NOTED, FIELD COORDINATE EXACT PLACEMENT WITH ARCHITECT.

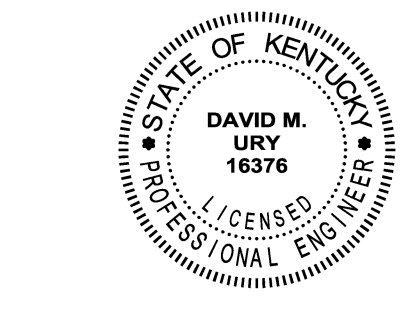


GENERAL ADMINISTRATIVE TECHNOLOGY WALL OUTLET

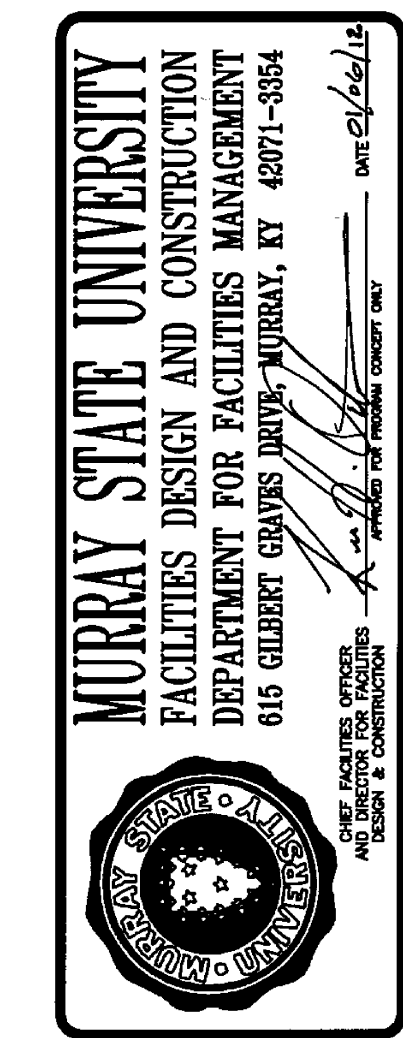
NO SCALE

PRESENTATION STATION TECHNOLOGY OUTLET J-BOX "C"

NO SCALE



Hastings+Chivetta
ARCHITECTURE • PLANNING • ENGINEERING
CIVIL, ARCHITECT, INTERIOR DESIGN, LANDSCAPE ARCHITECTURE, PLANNING
1222 E. MAIN ST., MURRAY, ILLINOIS 62889
MPE: MURRAY ENGINEERING, L.L.C. 500 SOUTH 17TH STREET, PADUCAH, KENTUCKY, 42002



SPORTS PRACTICE FACILITY
MURRAY STATE UNIVERSITY
MURRAY, KENTUCKY
BID SET - 2012-01-04



REVISIONS

Date -	2012-01-04
H+C Project No -	2983.00
FDC Project No -	10-007
BFW Project No -	11194
Marcum Project No -	11557
Sheet Name -	

ELECTRICAL DETAILS